

Master of Engineering (Professional)



JAMES COOK
UNIVERSITY
AUSTRALIA



Ready today for tomorrow

jcu.edu.au



Why JCU?

A STUDENT EXPERIENCE LIKE NO OTHER

- Access to world-class teachers
- Develop skills in state-of-the-art facilities
- Achieve exceptional employment outcomes
 - Benefit from small class sizes
 - Connect with professional networks
- Support through scholarships for merit and equity
 - Discover great accommodation options

OUTSTANDING GRADUATE OUTCOMES

JCU has been independently rated five stars for postgraduate employment outcomes and starting salaries[^].

EXCEPTIONAL STUDENT SUPPORT

Small classes enable access to world-class lecturers and researchers committed to student success. JCU Engineering is ranked #1 in Australia for learner engagement, student support and teaching quality, and #1 in Queensland for skills development and learning resources*.

WORK ANYWHERE IN THE WORLD

Leverage JCU's outstanding industry connections with global brands such as Huawei. Make a difference locally or globally with an internationally recognised qualification.

SUPPORT FOR YOUR SUCCESS

Explore JCU's range of scholarships, grants and bursaries and discover the right financial assistance to achieve your goals.

*Good Universities Guide 2022



Master of Engineering (Professional)

- ✓ Guaranteed structured internship placements in engineering firms for all Masters of Engineering (Professional) students, completed in the last semester of study.
- ✓ Dedicated professional employability subject, which builds enterprise skills and helps make students more competent when applying for internships and jobs.
- ✓ Acquire contemporary skills that will make you stand out in the job market. JCU Master of Engineering (Professional) subjects include data science, risk and safety, advanced asset management and conflict management in the workplace, as well as advanced technical subjects in state-of-the-art topics.

COURSE DETAILS:

Locations:	Cairns, Townsville
Commencing:	February, July
Duration:	2 years full-time, part-time available*
Prerequisites:	Bachelor of Engineering degree or equivalent in a discipline cognate to the major.

Please visit the [handbook](#) for a detailed outline of the course structure.

*Part-time is available for domestic students only.

Majors

Electrical and Renewable Energy

Advance the global renewable energy industry and meet the energy needs of the world. Learn specialised electrical engineering principles to integrate sustainable and renewable energy sources.

Internet of Things and Data Engineering

Advance the way society functions, from home life to social networking. Create mobile applications, develop internetworked embedded systems and construct a LPWA communications network.

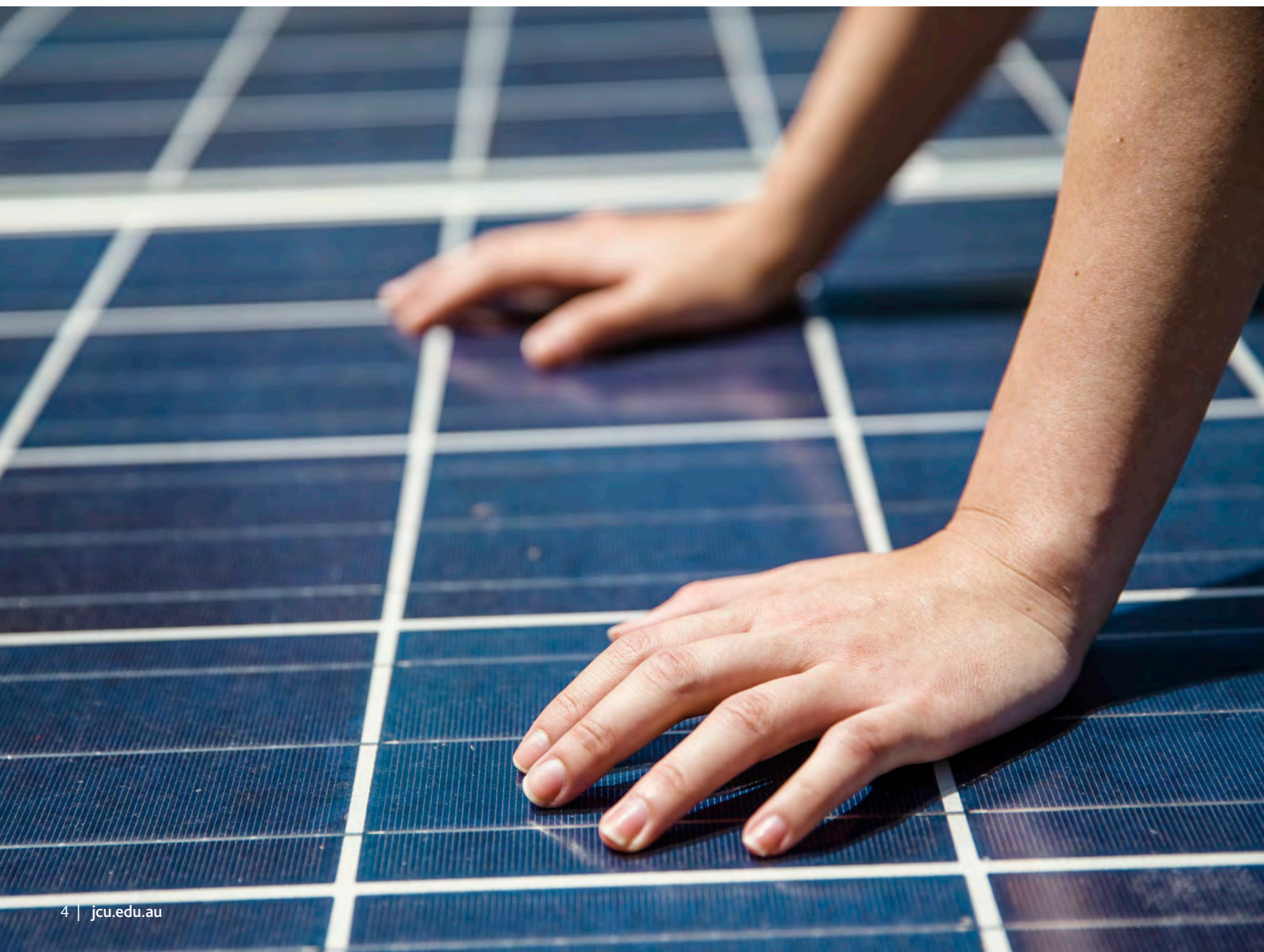
Technology and Management

Learn the theory, practice and business insight required to develop technology into a product. Learn from leading entrepreneurs, make influential networking connections, and take advantage of the flexibility of optional online study.

Water Resource Management

Learn sustainable water management strategies, develop conceptual and practical knowledge of hydrological processes, and design and complete a project on geographic information systems.

Enhance your employability and advance your career in Australia and globally through the [Masters Employability Program](#). Complete a structured co-curricular employability skills and development program, which runs for the duration of the degree. This includes a tailored plan to support individual employment objectives, beginning from semester one through to graduation.



“The Master of Engineering (Professional) in IOT and data engineering gives me internationally recognised qualifications which means I can work in a variety of places around the world. The best part of the degree is that it doesn’t focus on one thing but gives an overall picture of everything. We do engineering subjects, programming subjects, and then data science subjects – it’s a wide variety. So when I go to work in the industry after my degree I’ll have knowledge in each area.”

Harsh Parekh

MASTER OF ENGINEERING (PROFESSIONAL), MAJORING IOT AND DATA ENGINEERING



“This course provides a unique opportunity to improve engineering knowledge, skills, application ability, and professional and personal attributes. The subject content, case studies and projects are designed keeping industrial problem solving practices in mind. Acquiring these tools offer a head start to a rewarding career in Engineering.”

Madhu Krishnamenon

INDUSTRY LECTURER,
MASTER OF ENGINEERING (PROFESSIONAL)

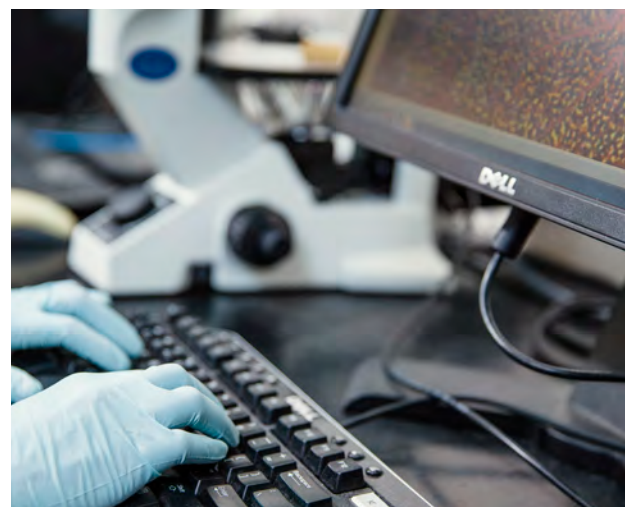
Career Opportunities

Gain advanced skills and knowledge highly-valued within the engineering sector through this robust postgraduate program. Be in demand in Australia and overseas as an engineering specialist in the fields of renewable energy, water resource management or the Internet of Things.

You will be a job-ready graduate with competencies in advanced engineering techniques. You will have the broader skillsets and attributes required to work and succeed as a professional engineer.

Upon completing the course, you will be accredited by Engineers Australia for Stage 1 competency standards (accreditation in process).

You will also gain a head-start in preparing for Stage 2 competency standards prescribed by Engineers Australia for Professional Engineers.





Postgraduate coursework applications

Apply directly to JCU, either by a form you download, complete and return, or by using the [Online Application Portal](#).

Your application must reach us before the deadline for your course.

ENTRY REQUIREMENTS

Postgraduate courses will usually require completion of an appropriate undergraduate degree for entry. You'll need to include certified copies of qualifications and academic records with your application. For some programs, appropriate work experience or equivalent qualifications will be considered.

The entry requirements for each course are included on the Apply now page for the course.

FURTHER INFORMATION

To find out more, call (+61) 1800 246 446 or contact the [Student Enquiry Centre](#).

Contact us

JCU Townsville: (+61) 7 4781 5255

JCU Cairns: (+61) 7 4232 1000

Freecall (within Australia): (+61) 1800 246 446

Email: enquiries@jcu.edu.au

