

The six principles of the JCU model

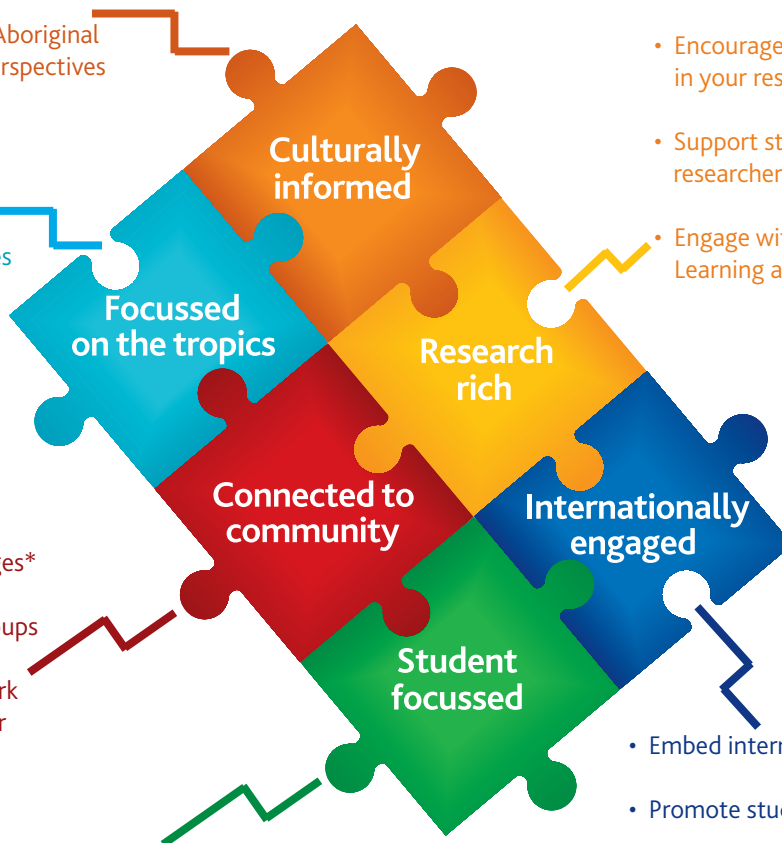
What does it mean for Learning and Teaching?

- Actively engage with Australian Aboriginal and Torres Strait Islander cultural learning opportunities
- Promote appropriate cultural protocols with Australian Aboriginal and Torres Strait Islanders
- Develop experiences that enhance cross-cultural communication
- Actively embed Australian Aboriginal and Torres Strait Islander perspectives

- Actively engage with the teaching research nexus
- Use your own research in your teaching
- Encourage students to participate in your research
- Support students to learn to be researchers
- Engage with the Scholarship of Learning and Teaching

Intentional

- Engage with the Grand Challenges* of the tropics
- Create immersion experiences in the tropics
- Use case studies from the tropics
- Support collaborations
- Participate in Grand Challenges*
- Ensure external reference groups
- Provide opportunities for Work Integrated Learning and other capstone experiences



- Engage with the Scholarship of Learning and Teaching
- Embed international perspectives
- Promote student mobility
- Foster global citizenship
- Promote interactions amongst students from different cultural backgrounds

- Foster comprehensive, integrated and coordinated approaches to the student experience
- Promote inclusive and supportive curriculum
- Ensure data and research-informed curriculum
- Create authentic, relevant and scaffolded learning and assessment
- Embrace diversity

Coherent