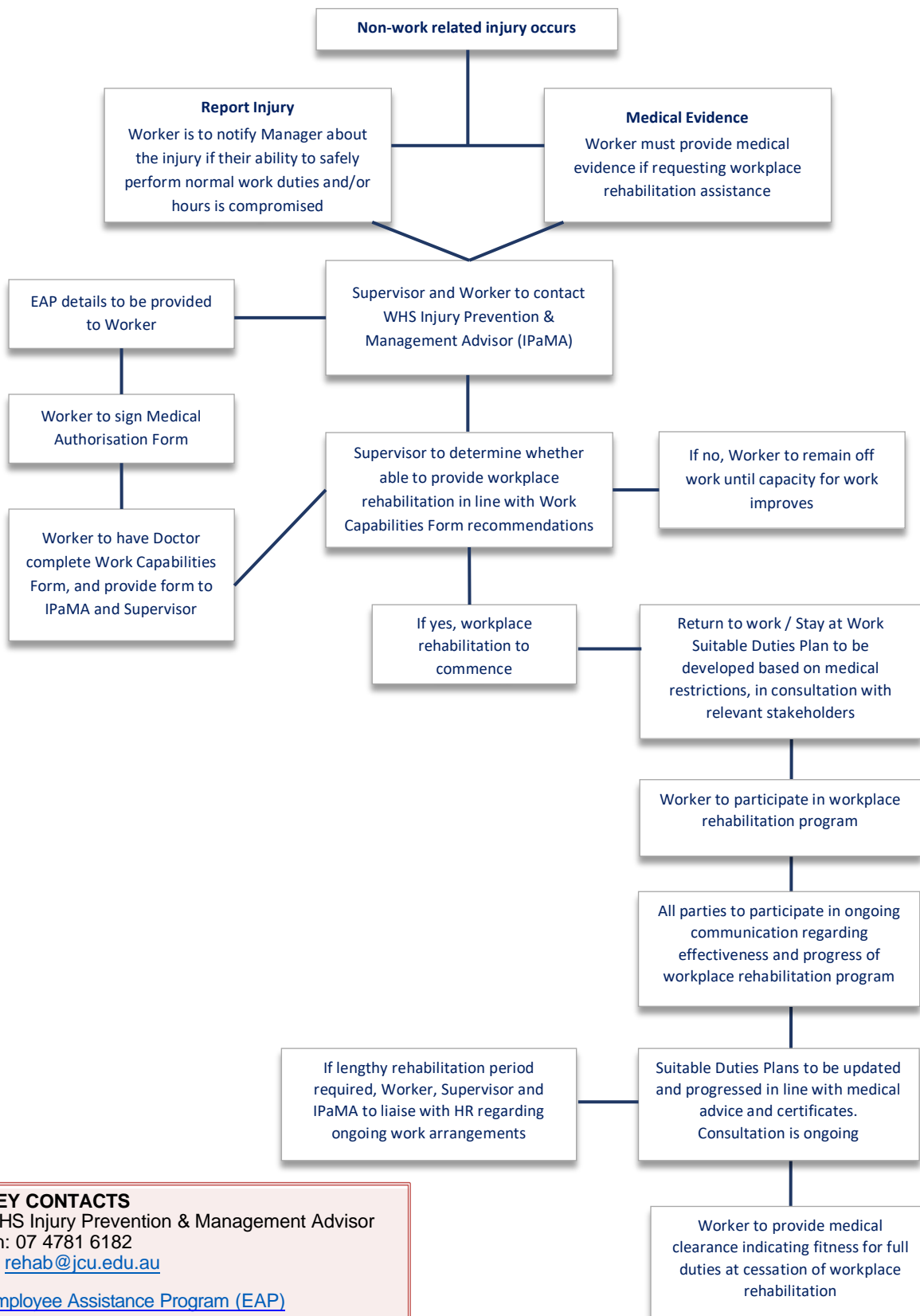


Appendix 2 – WHS-PRO-006 Health Management – Non Work Related Injury Management Flowchart



KEY CONTACTS

WHS Injury Prevention & Management Advisor
Ph: 07 4781 6182
E: rehab@jcu.edu.au

[Employee Assistance Program \(EAP\)](#)

LifeWorks:
Telephone : 1800 604 640
Web : www.lifeworks.com/au