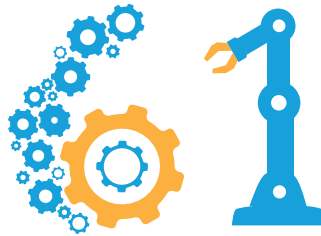


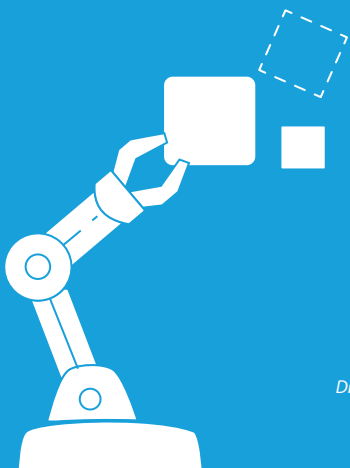
# Area



Partnering industry with possibility

## PROTOTYPE PROCESS

- Step 1: Small to Medium Enterprise (SME) approaches Area 61 with idea
- Step 2: Area 61 will do an eligibility check for the Commercial Manufacturing Voucher Scheme in collaboration with Department of Regional Development, Manufacturing and Water
- Step 3: Co-design with SME to determine feasibility, scheduling and costings
- Step 4: Quote from Area 61 for full project costing
- Step 5: Following contract execution project commences!
- Step 6: Project complete and agreed outputs delivered



 **CONNECT**

[www.jcu.edu.au/area61](http://www.jcu.edu.au/area61)

Disclaimer: The above process is to be used as a guide only (for voucher and non-voucher related activities).  
Each application will be assessed individually by Area 61.

