

2023

UNDERGRADUATE & POSTGRADUATE

# International Study Guide



JAMES COOK  
UNIVERSITY  
AUSTRALIA



NO. **1**

In Australia for full-time employment<sup>1</sup>

TOP **2%**

University worldwide<sup>2</sup>

NO. **1**

In the world for Marine and Freshwater Biology<sup>3</sup>

[jcu.edu.au](http://jcu.edu.au)

# Why JCU?

- Get a world-class education
- Join global leaders in research, marine sciences, biodiversity and tropical ecology
- Develop job-ready skills in state-of-the-art facilities
- Achieve exceptional employment outcomes
- Benefit from small class sizes
- Utilise financial support through JCU Scholarships
- Make friends and enjoy on-campus accommodation options
- Hands-on learning in spectacular, World Heritage listed reefs and rainforests



JCU DAINTREE RAINFOREST OBSERVATORY

TOP **75**  
UNIVERSITIES IN THE WORLD FOR GEOGRAPHY AND MINING AND MINERAL ENGINEERING<sup>4</sup>

NO. **2**  
IN AUSTRALIA FOR FULL-TIME GRADUATE SALARIES<sup>7</sup>

TOP **125**  
IN THE WORLD FOR LIFE SCIENCES<sup>5</sup>

TOP **20**  
UNIVERSITIES IN AUSTRALIA FOR UN SUSTAINABLE DEVELOPMENT GOALS<sup>3</sup>



ACCESS TO LEADING ACADEMICS

  
FIVE STARS FOR LEARNER ENGAGEMENT<sup>6</sup>

'WORLD CLASS OR HIGHER'  
IN **83%**  
OF RESEARCH FIELDS<sup>9</sup>

NO. **1**  
IN THE WORLD FOR MARINE AND FRESHWATER BIOLOGY<sup>3</sup>

TOP **300**  
UNIVERSITIES IN THE WORLD<sup>5</sup>

  
FIVE STARS FOR FULL-TIME EMPLOYMENT<sup>6</sup>



MAKE THE MOST OF OUR WARM, SUNNY CLIMATE AND ENJOY SUN, BEACH, RAINFORESTS, AND THE AUSTRALIAN OUTBACK

**21,498**  
STUDENTS

**4,463**  
EMPLOYEES

ON-CAMPUS ACCOMMODATION FOR OVER  
**1,600**  
STUDENTS



HANDS-ON LEARNING

  
FIVE STARS FOR SOCIAL EQUITY<sup>6</sup>



JCU ORPHEUS ISLAND RESEARCH STATION

NO. **25**  
IN THE WORLD FOR ECOLOGY<sup>4</sup>

NO. **1**  
IN AUSTRALIA FOR FULL-TIME EMPLOYMENT<sup>1</sup>



WORLD-CLASS FACILITIES

**\$1.9**<sup>Bn</sup>  
IN FUTURE INVESTMENT<sup>10</sup>

**7**  
HIGHLY CITED RESEARCHERS<sup>8</sup>

STUDENTS FROM  
**111**  
COUNTRIES



EXPERIENCE AUSTRALIAN CULTURE IN A WELCOMING AND DIVERSE COMMUNITY

TOP **100**  
IN THE WORLD FOR EARTH AND MARINE SCIENCES, ENVIRONMENTAL SCIENCES, AND HOSPITALITY AND LEISURE MANAGEMENT<sup>4</sup>

AUSTRALIA'S FIRST INTERNET OF THINGS RESEARCH LAB



**25**  
JCU SPECIALISED RESEARCH CENTRES & INSTITUTES

**12**  
DISTINGUISHED PROFESSORSHIPS

RESEARCH CONNECTIONS TO  
**124**  
COUNTRIES



JCU FLETCHERVIEW RESEARCH STATION

FIELD AND LAB TIME, WORK-INTEGRATED LEARNING PROGRAMS AND INTERNSHIPS

<sup>1</sup> 2019-2021 (aggregated) Quality Indicators for Learning and Teaching (QILT) Graduate Outcomes Survey, International UG study area. <sup>2</sup> THE World University Rankings 2022 as a percentage of the total number of universities according to the International Association of Universities. <sup>3</sup> 2017 Center for World University Rankings (CWUR). <sup>4</sup> 2021 Global Ranking of Academic Subjects (GRAS). <sup>5</sup> 2022 Times Higher Education (THE) World University Rankings

<sup>6</sup> 2022 Good Universities Guide. <sup>7</sup> 2021 International Outcomes Survey. <sup>8</sup> 2021 Web of Science. <sup>9</sup> 2018 Excellence in Research for Australia (ERA). <sup>10</sup> 2018 JCU Impact Report.

# Your world-class education begins here

## Contents

VC's welcome .....	4	Funding your studies and scholarships .....	22	Undergraduate academic entry requirements .....	38
Make North Queensland your home .....	6	World-class research.....	24	Postgraduate coursework courses and fees .....	40
JCU Cairns.....	8	JCU Study Areas.....	26	Postgraduate research courses and fees .....	42
JCU Townsville.....	9	- Business, Law and Finance .....	27	English entry requirements.....	44
JCU Brisbane .....	10	- Medicine and Dentistry .....	29	<b>HOW TO APPLY</b>	
JCU Singapore.....	11	- Nursing and Midwifery .....	30	Undergraduate and Postgraduate coursework.....	46
Student life .....	14	- Society and Culture.....	30	Higher degrees by research .....	47
Your dream career starts with JCU .....	16	- Science, Marine Science, Technology, Engineering and Maths.....	32		
Practical Learning .....	18	Undergraduate courses and fees .....	36		
Accommodation .....	20				



The flight routes on this map are a selection of what is available and indicative only. Please search appropriate airport websites for more information.

# Welcome to James Cook University

*Education is vital to our shared future. It is only through education that we deepen our understanding of the world, gathering the skills needed to use knowledge effectively and grow as people able to contribute to society and shape a brighter future. Education also provides a route to access more challenging and rewarding careers. Yet education is also so much more: It can let us dream, explore exciting new concepts, have fun, and make lifelong friends.*



As you start your international education journey, our commitment to you is that JCU is about all these things. We are also about great student experiences and exceptional academic and career outcomes. All Australian universities will make the same promises, but with JCU there is one big difference. While you study you can experience authentic learning in our own backyard across the Great Barrier Reef, Daintree Rainforest, and the great Australian outback. You can also work with regional and remote communities, explore ecosystems as living laboratories, or work in areas where climate change and the awesome power of nature are both fearsome and challenging. That's why JCU is Uni, but not as you know it.

For over 50 years, JCU has helped create that brighter future through students and graduates who make a difference. We are committed to bringing together our natural world, the built environment, people and societies, through experiential learning. We do so with a view to living the United Nations' Sustainable Development Goals and were ranked #5 in the world<sup>1</sup> for our commitment to health and wellbeing. We have a strong international reputation, recognised among the world's top 300 universities<sup>2</sup>, top 25 universities for ecology<sup>3</sup>, the top 100 for earth and marine sciences<sup>4</sup>, and being independently rated five stars for starting salary, learner engagement, full-time employment, and social equity<sup>5</sup>. These achievements are hard-earned and a tribute to the commitment of academics and professional staff in supporting students on their journey to becoming well-rounded graduates.

As you explore this guide, consider the opportunities available to you

and how they might enable your journey of discovery. We are committed to you having a student experience that is life-changing, whether it is in one of the most fascinating places in the world or online in the comfort of your own home.

The COVID-19 global pandemic and international travel restrictions have resulted in changes to teaching and learning at JCU, in order to keep everyone safe and adhere to Australian Government guidelines. We have made adjustments to our course offerings to enable students in some courses to study online, and will continue to work closely with our students to ensure they gain the best possible outcome from their time studying with us, and develop the skills, knowledge and confidence to launch their careers.

During times of uncertainty, education increases in its importance to you and your community and an educational experience that crosses international borders and engages international perspectives is becoming more important than ever. Thank you for taking the time to explore JCU. We look forward to creating a brighter future with you that makes a difference.

Professor Simon Biggs  
Vice Chancellor and President

<sup>1</sup>2022 Times Higher Education (THE) Impact Rankings. <sup>2</sup>2022 Academic Ranking of World Universities. <sup>3</sup>2021 Global Ranking of Academic Subjects. <sup>4</sup>2022 QS World University Rankings. <sup>5</sup>2022 Good Universities Guide.

## RESPECT. NOW. ALWAYS.

James Cook University values and celebrates the diversity of our community and is committed to ensuring our learning and working environment is safe and welcoming.

JCU is proud to be part of the Respect. Now. Always. campaign – a national initiative led by Universities Australia to highlight our determination to ensure our students and staff are safe from discrimination and sexual harassment. Further information about the campaign and free services available for students can be found at [jcu.edu.au/segw](http://jcu.edu.au/segw)



## Our commitment to Australian Aboriginal and Torres Strait Islander peoples

James Cook University is committed to building strong and mutually beneficial partnerships that work towards closing the employment, health and education gap for Australian Aboriginal and Torres Strait Islander peoples.

Our students come from many backgrounds, promoting rich cultural and experiential diversity on campus.

*We acknowledge the Australian Aboriginal and Torres Strait Islander peoples as the Traditional Owners of the lands and waters where we operate our business. We honour the unique cultural and spiritual relationship to the land, waters and seas of First Australian peoples and their continuing and rich contribution to James Cook University (JCU) and Australian society.*

*We also pay respect to Ancestors and Elders past, present and future.*



### Coming Together and Respecting Difference

Acrylic on linen by Cassandra Savage (JCU Alumni)

Language group: Waanyi and Walangama clan part of Gkuthaarn/Kukatj nations

JCU acquired this artwork as part of our commitment to implement the Reconciliation Action Plan. The artwork represents JCU's story in an Australian Aboriginal and Torres Strait Islander way:

- Circles in the middle depicts JCU as a meeting place
- Outer circles are JCU's linkages to communities through their students who return home to share their new knowledge and understandings
- Different patterns within the hands and arms are the differences between and within Aboriginal, Torres Strait Islander, and multicultural Australia. There are also similarities in the hands and arms used to illustrate us standing together for equity and equality
- The ripple effect in the arms and hands represents our reconciliation journey; starting small, growing bigger and reaching out to touch more and more lives. The effect gathers momentum to develop support and understandings. The circles represent the importance of yarning circles, meeting circles, and communities, in order that we can connect with each other.

This publication is intended as a general guide for prospective international students. All applicants should contact the University to confirm admission requirements, fees and availability of courses. Information is correct at the time of printing. James Cook University reserves the right to alter any course or admission requirement without prior notice.

# Make North Queensland your home



The Strand, Townsville.

*Enjoy hands-on learning opportunities in unique and spectacular locations – including UNESCO World Heritage listed rainforests and the Great Barrier Reef. Explore, discover, grow and make unforgettable memories.*

North Queensland offers a unique combination of a stunning climate, pollution-free environment, multicultural population, and a significantly lower cost of living than Australian cities such as Brisbane, Melbourne and Sydney.

North Queensland is one of the world's leading hubs for coastal and tropical science and environmental studies. If you're interested in the future of the planet, there are few better places to study.

## Explore the great outdoors

Explore reefs, rainforests, coastal, mountain and outback ecosystems and Indigenous centres. Enjoy the stunning tropical climate and take part in a range of outdoor recreational activities including hiking, mountain biking, and snorkelling and scuba diving. Or simply relax on one of our many famous beaches, where white sand and crystal-clear waters await you.

## Welcoming communities

The international student populations in Cairns and Townsville are diverse and close-knit, and the local communities are multicultural and welcoming.

International students have many opportunities to become part of the local community and enjoy the Australian lifestyle, and meet new friends from all around the world.



The Smithfield Mountain Bike Park is the oldest in the country and located directly behind JCU's Cairns Campus.



International PhD student Chris Hemingson lays a transect tape over a coral reef. Photo: Victor Huertas Martin



Enjoy living in welcoming, multicultural and student-friendly communities.

# JCU Cairns



The Ideas Lab at JCU Cairns.

Students in Cairns have access to modern teaching facilities and resources in a tranquil, rainforest location.

Cairns is the only place in Australia where two UNESCO World Heritage Sites are located side-by-side. The gateway to the Great Barrier Reef and Daintree and Wet Tropics Rainforest - Cairns is an inspiring place for students who want to make a difference and spend time with like-minded eco-aware people.

The city centre sits on the waterfront, with parks, restaurants, bars, sport and recreation areas and a 4800m<sup>2</sup> lagoon along the Esplanade.

Close to the main JCU campus are a chain of relaxed seaside suburbs including Trinity Beach and Palm Cove. Picture sandy beaches dotted with palm trees, and lifeguard patrolled swimming areas.

Cairns is a clean, green city and its residents are passionate about protecting and advancing the understanding of the region's outstanding natural environment. Industries that drive Cairns are diverse, ranging from tourism and health through to agriculture and education.

### A nature lover's wonderland

The 100 million-year-old UNESCO World Heritage-listed Wet Tropics Rainforest is right on the doorstep of Cairns. Take an easy walk or long hike and explore the rich and unique biodiversity within this 894,420 hectare wonder. The Cairns Regional Council provide residents with a great range of sports grounds, walking and cycling tracks and free exercise classes.

### A region buzzing with arts and culture

Cairns is world renowned for its reef and rainforest but if you scratch the surface you will also discover a region buzzing with arts and culture. Take in a show at the Cairns Performing Arts Centre, Munro Martin Parklands or Tanks Arts Centre, explore the various bars and restaurants, check out one of the ocean-side markets, or explore the rich history of the world's oldest living cultures.

### Campuses

JCU Cairns, Nguma-bada campus, Smithfield, is located near the popular northern beaches and approximately a 20-minute drive from the city centre. Study facilities can also be accessed at the JCU Cairns, Bada-jali campus, Cairns City.

### Climate

Wet season (November–May)

24°–32°C/75°–90°F

Hot, rainy and humid

Dry season (June–October)

17°–26°C/63°–79°F

Mild and dry

### Population

City: 240,190

JCU Campus: 3,309 students

### Transport

Bus, drive or cycle between campus and home. Cairns also has an international airport.

### Places of worship

JCU's Multifaith Chaplaincy Centre.

### Medical

JCU students can access local healthcare services including dental, medical and psychological services. The Cairns Hospital provides 24 hour acute care.

### On-campus sport

Gymnasium, basketball courts, sport fields and a world-class mountain bike track.



The Laura Quinkan Dance Festival highlights the diverse communities, language, song, dance and stories and showcases the strength, pride and uniqueness of Aboriginal peoples.



The Cairns Esplanade is a great place to enjoy a walk and grab a bite to eat. Photo credit: Tourism and Events QLD and Andrew Watson.

# JCU Townsville



The Science Place at JCU Townsville, a four-level, 12,000 square-meter hub for teaching and research with ultramodern laboratories and technology-enabled active learning spaces.

*At the heart of a tropical health and knowledge precinct, JCU Townsville offers a unique study experience.*

A thriving coastal port city, Townsville is the largest city in northern Australia and one of Australia's fastest growing regional centres.

The region has a strong and diverse economic base including mining, mineral processing, agriculture, manufacturing, tourism, healthcare, government and defence.

#### Leading hub for marine research

Townsville is renowned for marine research and is home of the headquarters of major marine research and management authorities including The Great Barrier Reef Marine Park Authority and The Australian Institute of Marine Science. Take advantage of JCU's research sites on Orpheus Island and the Daintree Rainforest as part of your studies.

#### Vibrant lifestyle

Visit 'The Strand', a 2.2km beachfront promenade in the heart of Townsville. Along this palm tree lined stretch are bike and walkway paths, safe swimming beaches, picturesque picnic spots, playgrounds, exercise stations, and restaurants and bars with water views. Townsville offers an eclectic mix of cafes, restaurants, boutiques and bars, as well as fresh food markets.

#### Outdoor adventures

There's so much to explore in Townsville. Grab a snorkel and explore the kaleidoscopic colours of the Great Barrier Reef, jump on a ferry and visit nearby Magnetic Island or walk up Castle Hill - a giant pink granite monolith standing proud in the centre of the city.

#### Campus

JCU Townsville, Bebegu Yumba campus, Douglas, is approximately a 20-minute drive from the city centre. Study facilities can also be accessed at the Townsville City Campus.

#### Climate

**Summer (December–February)**

24°–32°C/75°–90°F

Hot and humid

**Winter (June–August)**

13°–26°C/56°–79°F

Mild and dry

#### Population

City: 229,031

JCU Campus: 11,637 students

#### Transport

Bus, car, cycle or walk between campus and home.

#### Places of worship

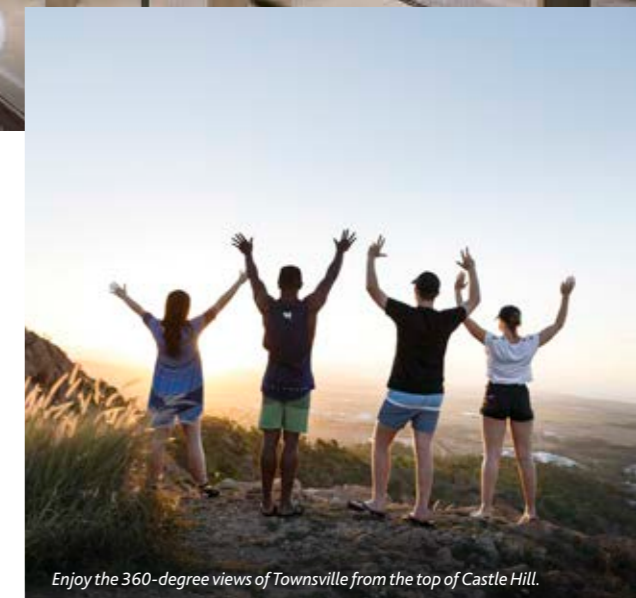
JCU's Multifaith Chaplaincy Centre.

#### Medical

JCU students have access to a range of on-campus services including dental, medical, psychological, physiotherapy, occupational therapy, speech pathology and exercise physiology clinics. Students can also access nearby healthcare services including the Townsville University Hospital which is located adjacent to the JCU campus and provides 24 hour acute care.

#### On-campus sport

Gymnasium, basketball courts, tennis courts, squash courts, netball courts, rugby and soccer fields, hockey fields and cricket pitches.



Enjoy the 360-degree views of Townsville from the top of Castle Hill.



Be part of Townsville's dynamic marine research community. Photo credit: Harriet Spark, Crumpy Turtle Creative.



The Strand offers a range of fun outdoor activities.

# JCU Brisbane



Perfect weather and proximity to some of the world's most beautiful natural wonders are just some of the reasons you will love studying in Brisbane.

*JCU Brisbane is a modern, metropolitan campus located in the centre of Brisbane. Experience a world-class education, work opportunities and a balanced lifestyle in a welcoming and multicultural city. JCU Brisbane hosts many student clubs, associations and events where students can socialise with university staff and students from over 88 countries.*

[jcu.edu.au/brisbane](http://jcu.edu.au/brisbane)

## Brisbane fast facts

- Brisbane is the capital of Queensland and the third largest city in Australia
- Brisbane has been officially selected to host the 2032 Olympics
- Brisbane is close to some of Australia's best beaches on the Gold Coast and Sunshine Coast
- Brisbane is one of the most affordable cities in Australia and is known for being safe and friendly.



## Climate

### Summer (December–February)

21°–30°C/69°–85°F

Warm with rainy periods

### Winter (June–August)

11–21°C/51.6°–69.8°F

Dry and mild

## Population

2.5 million (city)

## Transport

Bus, train and ferry services are available within a short walking distance of the campus. The Brisbane International Airport is open 24/7 and is Australia's third largest airport in terms of passenger traffic.

## Places of worship

A prayer room is available on-campus for student use.

## Medical

There are hospitals, medical clinics, psychology clinics and more off-campus.

# JCU Singapore



Prepare yourself for the global workforce in one of the most dynamic cities in the world.

*James Cook University in Singapore was established in 2003, as JCU's first international campus. The Singapore campus boasts cutting-edge facilities, collaborative learning spaces, and internationally renowned lecturers to help you succeed every step of the way. You will get the same quality educational programs and senior academic staff as JCU students in Queensland.*

[jcu.edu.sg](http://jcu.edu.sg)

## Singapore fast facts

- As an ever-evolving city, Singapore is at the forefront of global health, technology and economic advancement
- Be a part of this rich multicultural community.



## Climate

### Dry season (March–August)

25°–32°C/77°–90°F

### Wet season (September–February)

24°–32°C/75°–90°F

## Population

5.45 million (city), 4,000 (campus)

## Transport

Two MRT (train) stations are a 10-minute walk from campus, and there are three bus stops within a short walking distance to the campus.

## Places of worship

Two prayer rooms are available on-campus for student use.

## Medical

The JCU Singapore Psychology Clinic is located on campus. A hospital is available 15 minutes from the campus, as well as several medical clinics around the city.

## Sporting facilities

A wide range of sporting facilities are available on campus, including a gymnasium, cricket pitch, multi-purpose sports courts (basketball, volleyball and tennis), and an indoor multi-purpose hall for badminton games.



# Student Life

Meet new people, make connections and experience the very best of student life.

## International Student Support

The JCU International Student Support team are dedicated to ensuring every international student gets the most out of their time at JCU.

A range of social events are held on a regular basis, to help international students develop friendships, meet staff, and become familiar with campus services.

The team provide a range of services, including pre-departure information, an airport arrival service, accommodation advice, and international student mentor programs.

An International Student Orientation is held at the start of each semester. This is a great opportunity to make new friends, meet JCU staff, and hear important information about life at JCU.

The team provide support and assistance in emergencies, and all JCU international students can access a 24/7 after-hours student hotline.

## Events

Social gatherings, sporting activities, talent competitions and celebrations are organised for students on campus, and are also hosted by community organisations.

## On-campus convenience

Cairns and Townsville campuses both offer a range of food outlets for your coffee, snacking and lunch needs.

## Clubs and societies

Meet new people with common cultural, political, religious, sporting, recreation and academic interests.

The JCU Student Association and JCU International Student Association provide a range of social, sporting and academic clubs and societies meaning there are plenty of ways to meet like-minded students. All JCU students receive membership to the JCU Student Association, offering discounts, events and amenities.

## Sport and recreation

Access a range of on-campus sporting clubs and facilities including gyms, basketball courts, sporting fields and world-class mountain bike tracks.

## Trips and tours

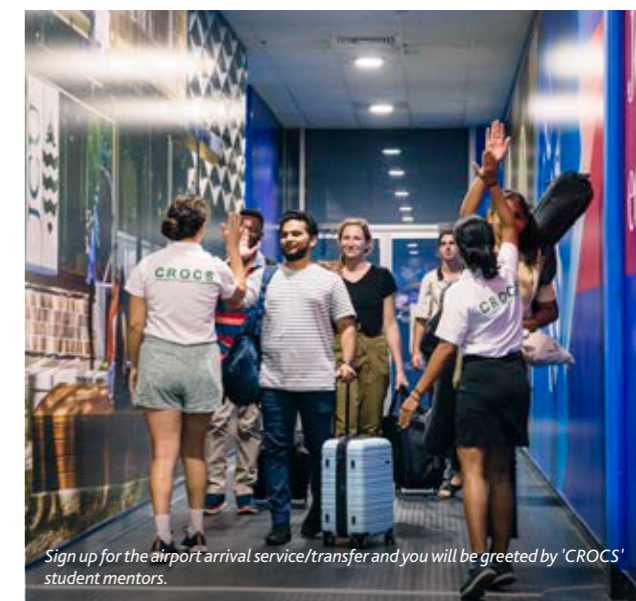
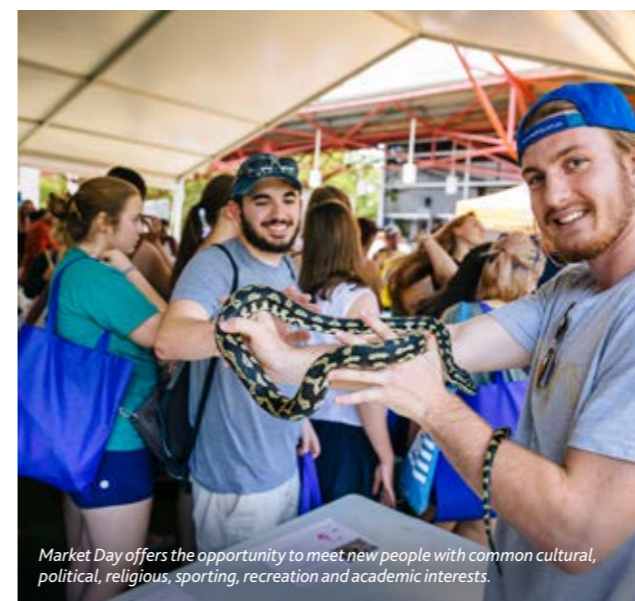
Looking for a bit of adventure? Take a break from study and explore beautiful North Queensland's mountains, beaches, reefs and rainforests. Cuddle a koala, go skydiving or bungee jumping, or just find the best cafe in town. There is plenty to do for all tastes and personalities.

## Volunteering

If you're passionate about sustainability and the environment, our award-winning TropEco program could be perfect for you. Collaborate with like-minded people and volunteer in a range of TropEco activities, from running campaigns to maintaining on-site community gardens. Volunteer opportunities abound, and are a great way to make friends and spend time with like-minded people. You could volunteer at Orpheus Island Research Station near Townsville, or at the Fitzroy Island Turtle Rehabilitation Centre near Cairns.

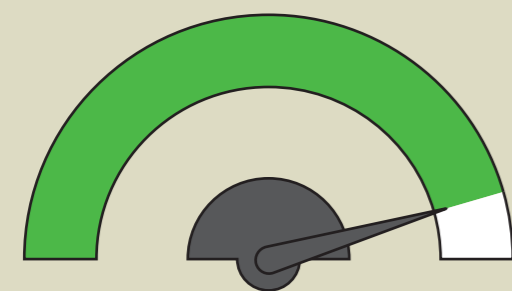
## The Learning Centre

The Learning Centre supports students with a range of resources. Our Learning Advisors help build academic skills and provide study tips, numeracy and basic statistics development, help with academic reading and writing, or run programs to further develop your English language skills with workshops or online programs.

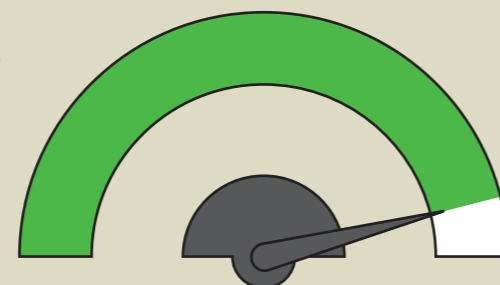


The JCU 2021 JCU International Gala and Awards Night celebrated and recognised the achievements and contributions of JCU's international students. A number of awards were announced at the event. Pictured above from left to right are the award recipients: Christopher Eric MacDonald - winner of the Spirit of Australia Award, Thibault Enrik Thime Eddie - winner of the Community Engagement Award, Lucas Leo Lutzenkirchen - winner of the Undergraduate International Student of the Year Award, Deborah Anne Burn - winner of the Inspirational Leader Award, and Nnamdi Chidiebere Mgbemena - winner of the Postgraduate International Student of the Year Award.

The International Student Barometer Survey measures decision-making, expectations, perceptions and intentions from application through to graduation.



Support services 90.8% satisfaction rate



Arrival services 91.6% satisfaction rate

# Your dream career starts with JCU

*JCU graduates have the perfect balance of technical skills and creative outside-the-box thinking. We emphasise practical, immersive learning – making JCU graduates highly employable.*

## Professional experience is key

Take part in field trips, clinical placements, practicums and internships, and network with leading industry professionals via student placements and projects. You will transition into the workforce with the practical skills and knowledge you need to succeed.

## Careers and employability services

We offer services including career planning, events and workshops, assistance with finding work while studying, job application tips and support, and much more.

## Go global

Moving to Australia to commence your studies at JCU is an adventure in itself, but why stop there? Interstate and international study, work placement and volunteering opportunities give you the global perspective you need to take your degree to the next level.

## Volunteering

Build your skills, experience and your resume via a range of extracurricular volunteering opportunities. Make a valuable difference to the community, have fun, gain work experience and network with friends and professionals. From protecting the environment to assisting at events, there is a volunteering opportunity to suit everyone.



**NO. 1**  
**in Australia for Full-time Employment Rates**  
International Graduate Outcomes Survey 2021

**NO. 2**  
**in Australia for Full-time Graduate Salaries**  
International Graduate Outcomes Survey 2021

**5 STARS**  
**for Employability**  
2021 QS Stars Rankings

**5 STARS**  
**for Full-time Employment and Starting Salary**  
2022 Good Universities Guide

JCU Bachelor of Medicine, Bachelor of Surgery student Dinuka Ariyaratna from Sri Lanka completed a placement at the Innisfail Hospital in Far North Queensland, providing essential services to the community during the COVID-19 pandemic.

**Dinuka Ariyaratna**  
SRI LANKA  
BACHELOR OF MEDICINE, BACHELOR OF SURGERY



Sai Pavan Pandrangi, a JCU international student from India, graduated with a Master of Information Technology and secured employment soon after with Australian telecommunications company Optus.

**Sai Pavan Pandrangi**  
INDIA  
MASTER OF INFORMATION TECHNOLOGY

# Practical Learning



Take advantage of our unique tropical location and take part in field trips to put your learning into practice.

## Field trips

Many JCU subjects include field trips to various locations including our very own research stations on Orpheus Island in the Great Barrier Reef and in the Daintree Rainforest. Some of our most popular trips include Wooroonooran National Park, Wambiana Station in Western Queensland, JCU's Orpheus Island Research Station, Three-mile Creek, Magnetic Island and Reef HQ.

## Orpheus Island Research Station

JCU's Orpheus Island Research Station is located 125km north of Townsville. Many subjects include field trips to the Island, which facilities include accommodation for up to 57 guests, wet and dry labs, temperature control room laboratories, and a range of boating, SCUBA diving and snorkelling equipment.

## Daintree Rainforest Observatory

The Daintree Rainforest is one of the oldest rainforests in the world. It has the highest biodiversity of any ecosystem in Australia and is a magical landscape with unique biota, including numerous living fossils. Completely off-grid, the JCU Daintree Rainforest Observatory is the only field station in Australia operating a rainforest canopy crane and is one of only five long-term ecological monitoring sites in Australia. Facilities include a lecture theatre, indoor and outdoor laboratories and accommodation.

## Wambiana Station

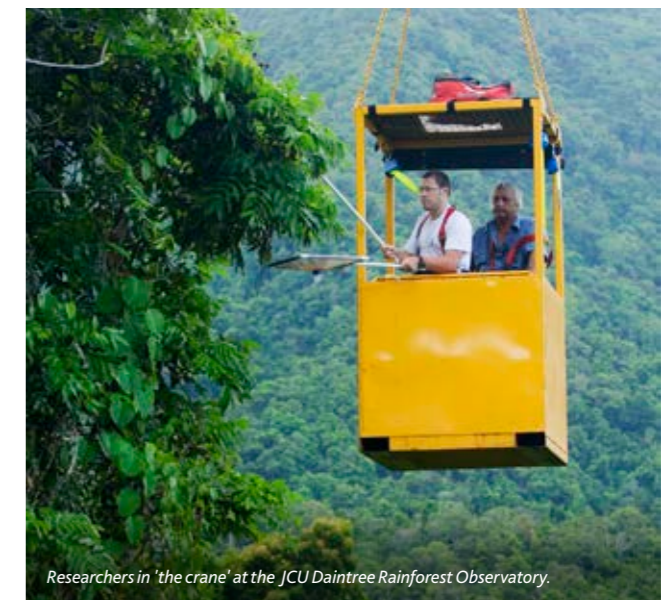
Wambiana is a fully operational outback cattle station. The Station contains a range of habitats including woodlands, dense thickets, a river, a lagoon, and areas grazed at different densities. It's a great place to spot lots of Australian wildlife, including varied macropods (kangaroos, wallaroos, wallabies and bettongs), possums, marsupial carnivores, many species of birds and a diverse array of reptiles.



Get hands-on learning at JCU's Aquaculture facility.

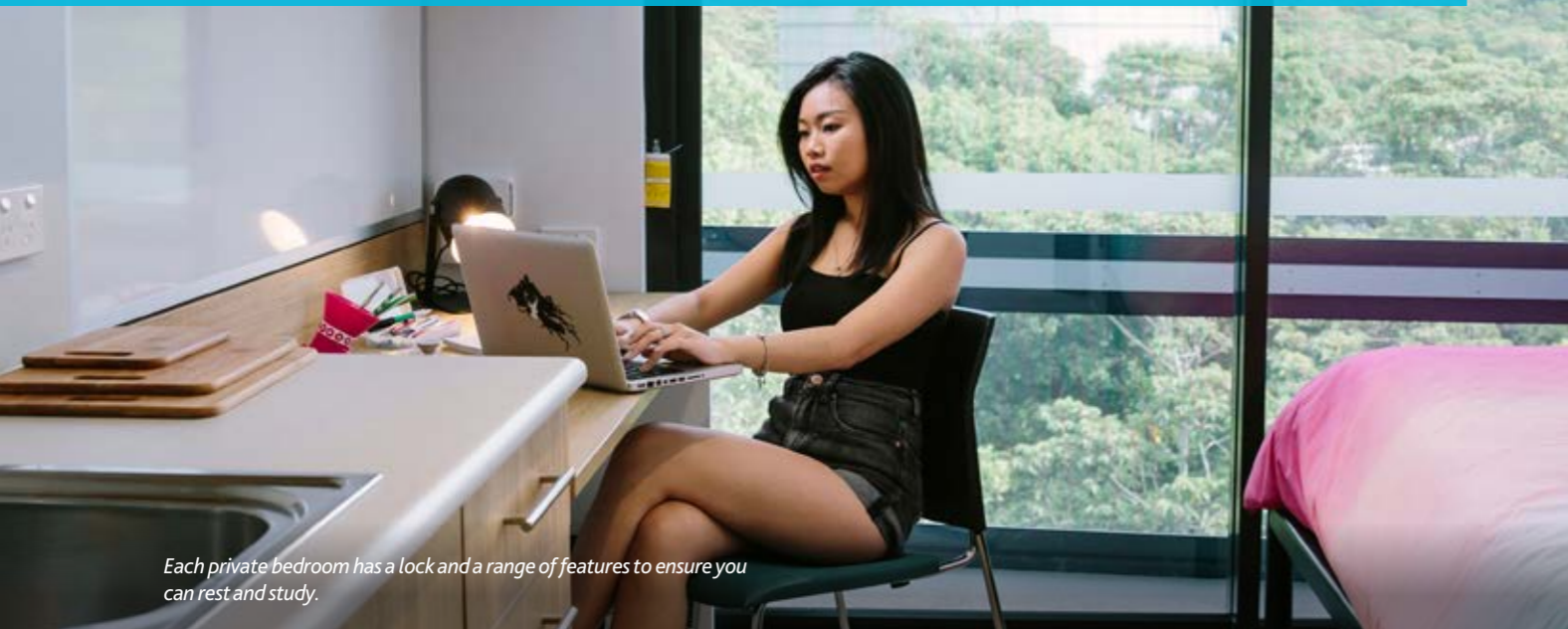


Enjoy nature up close and personal on our tropical campuses.



Researchers in 'the crane' at the JCU Daintree Rainforest Observatory.

# Accommodation



Each private bedroom has a lock and a range of features to ensure you can rest and study.



JCU Townsville's newest accommodation features a range of spaces to study, relax and socialise. Located next to JCU's Technology Innovation Complex, this new student accommodation is home to more than 400 students. Designed to provide contemporary and affordable student accommodation in a secure, safe, and environmentally sustainable space, the facility features study bedrooms in group-share accommodation, high-quality communal facilities, and a centralised, self-catered 'master-chef' style kitchen and dining space.

Find the right accommodation for you to call home at JCU.

## Living on-campus

Living on-campus is a great way to make new friends and immerse yourself into JCU and Australian culture. By living somewhere comfortable and conveniently close to where you study, you can improve your overall student experience. Our on-campus options range from long corridor-style, fully-catered residences to smaller self-catered facilities. With so many options available across our different campuses, you can find the perfect place to suit your needs.

## Support and security

Living on-campus is so much more than just a room. It is a safe, secure and fun way to study. All residences include academic, wellbeing and social support.

- Each bedroom has a lock that only you and our staff can access. Only residents have after-hours access to any buildings
- Security cameras throughout the buildings. JCU security are on-campus and patrol the grounds 24/7 and can escort you back to your residence if you are studying late at night
- Our on-campus team are here to support you.

## Find the right option for you

JCU provides on-campus accommodation at JCU Townsville and JCU Cairns. JCU Townsville has five different accommodation options that house over 1,200 students, and JCU Cairns has a complex for 300 students. Whether you need accommodation for a semester or for your full degree, there are plenty of options available.

- All rooms at our on-campus residences are single board, with a single bed, study desk, chair, fan, air-conditioning and Wi-Fi
- Each residence has a different style of living, culture and atmosphere. There are options for fully catered meals, which can be adapted to dietary requirements, or self-catered housing.

## Homestay

With homestay accommodation, you are matched with a local family from the area to live with. All homestay hosts have been:

- Screened by the JCU's homestay provider, and
- Undergo training to provide a high level of service and comfort to the student.

## Living off-campus

Off-campus housing can include sharing a house with other students, off-campus student accommodation or renting an entire property.

Before committing to a property or room off campus, always check:

- What you are getting is part of your lease. For example, images of the property with furniture may have been put there for marketing purposes only
- Dates and length of time you are committing to. You will be signing a legal document, which you may not be able to break if you change your mind
- The property is located close to the university campus, bus stops and amenities.

## Further information and virtual tours of each residence

[jcu.edu.au/accommodation](http://jcu.edu.au/accommodation)



There are options for full catered meals, or self-catered housing.

# Funding your studies and scholarships



When preparing your budget, make sure you do your research and factor in all your possible expenses. To help guide you, we've detailed what study costs you may incur as well as costs to think about before you arrive that are related to your studies.

## Tuition Fees

International tuition fees for all levels of study are detailed from page 36.

## Incidental and Administration Fees

Some courses have Incidental and Administration Fees for compulsory purchases not covered by your tuition fees such as uniforms, safety equipment and participation in course-related field trips.

## Student Services and Amenities Fee

The Student Services and Amenities Fee is a compulsory fee for JCU students and is used to provide a range of student support services and facilities.

## Overseas Student Health Cover (OSHC)

OSHC is insurance to assist international students in meeting the costs of medical and hospital care that they may need while in Australia. As an international student, it is a condition of your student visa that you have OSHC for the entire duration of your stay in Australia.

## Financial Aid

JCU processes financial aid for students from a variety of countries. JCU is also registered as a provider to certify and administer US Federal Aid for new and continuing US students located at our Cairns and Townsville campuses.

## Living costs

Knowing the average living costs in Australia is an important part of your financial preparation.

The below provides a guide to the approximate cost of living, and is provided by the Australian Government website [studyaustralia.gov.au/english/live/living-costs](http://studyaustralia.gov.au/english/live/living-costs). All costs in are Australian dollars, are approximate and are subject to change.

### Accommodation

- Hostels and Guesthouses - \$90 to \$150 per week
- Shared Rental - \$95 to \$215 per week
- On-campus - \$110 to \$280 per week
- Homestay - \$235 to \$325 per week
- Rental - \$185 to \$440 per week

### Other living expenses

- Groceries and eating out - \$140 to \$280 per week
- Gas, electricity - \$10 to \$20 per week
- Phone and Internet - \$15 to \$30 per week
- Public transport - \$30 to \$60 per week
- Car (after purchase) - \$150 to \$260 per week
- Entertainment - \$80 to \$150 per week

## Scholarships

We are proud to offer a range of scholarships to international students.

### JCU Vice Chancellor's International Student Scholarship

Provides up to a maximum of AUD\$40,000 per year for the minimum course duration.

### JCU International Excellence Scholarship

Provides a 25% tuition fee reduction for eligible high-achieving students from Asia, Canada, Europe, Latin America, the Middle East, Papua New Guinea and the USA.

### JCU International Merit Stipend

Provides monthly payments of AUD\$800 to assist with expenses throughout the duration of study at JCU, for eligible high-achieving students from Africa.

### Research Scholarships

JCU offers highly competitive scholarships to students commencing research degrees at Masters or Doctoral level.



You can browse all scholarships available to international students on the JCU scholarships website, which provides further details on all scholarships including eligibility criteria and application information.



*"JCU offered a great scholarship that helped me to balance my studies, work and wellbeing. With my studies from JCU, I can come back to my country and register my career."*

### Ana Belen Munoz Arteta

ECUADOR  
MASTER OF SOCIAL WORK (PROFESSIONAL QUALIFYING)  
JCU INTERNATIONAL EXCELLENCE SCHOLARSHIP RECIPIENT

# World-class research

JCU's own canopy crane in the World Heritage Daintree Rainforest.



JCU's proximity to the Great Barrier Reef means students have easy access to a diversity of marine and coastal ecosystems.

*Study at a university known for its world-leading research, knowledge infrastructure, partnerships and research findings.*

JCU is committed to creating a brighter future for life in the tropics world-wide through discoveries that make a difference.

But don't just take our word for it. Excellence in Research for Australia (ERA) rated 83% of JCU's research fields as world-class or above.

JCU received the highest possible rating, well above world standard, in the research areas of ecological applications, ecology, environmental science and management, fisheries sciences, geology, medical microbiology, organic chemistry and plant biology. Every field of research in medical and health sciences was rated world-class or above.

JCU received a rating of world-class or above in the following research areas:

- Anthropology
- Applied Mathematics
- Archaeology
- Biochemistry and Cell Biology
- Cardiorespiratory Medicine and Haematology
- Classical Physics
- Clinical Sciences
- Criminology
- Ecological Applications
- Ecology
- Electrical and Electronic Engineering
- Environmental Science and Management
- Evolutionary Biology
- Fisheries Science
- Geochemistry
- Geology
- Human Geography
- Human Movement and Sports Science
- Immunology
- Inorganic Chemistry
- Law
- Linguistics
- Materials Engineering
- Medical Biochemistry and Metabolomics
- Medical Microbiology
- Microbiology
- Neurosciences
- Nursing
- Oncology and Carcinogenesis
- Organic Chemistry
- Physical Chemistry and Environmental Geoscience
- Plant Biology
- Public Health and Health Services
- Sociology
- Specialist Studies in Education
- Technology
- Tourism
- Veterinary Sciences
- Zoology.

## Unrivalled access to environmental sites

JCU campuses and research hubs are on the doorstep of some of the world's most spectacular environments, including:

- The Great Barrier Reef Marine Park
- The rainforests of the Wet Tropics
- The savannahs of Cape York Peninsula
- The deserts of the arid outback.

These living laboratories provide JCU staff and students with unlimited opportunities. Governments and global businesses consider JCU's research as central to the future of the tropics.

JCU has strong links with rural, remote and Indigenous communities in the Asia Pacific region. Many local, national and international research organisations and industry groups collaborate with JCU. These linkages help ensure our courses are research-rich and reflect the latest innovations. Many of our staff and students are co-located with researchers from partner institutions.

## JCU research sites

Study and research in JCU's innovative research facilities across Northern Queensland.

**JCU Cairns Institute**  
[jcu.edu.au/cairnsinstitute](http://jcu.edu.au/cairnsinstitute)

**JCU Australian Institute of Tropical Health and Medicine**  
[aithm.jcu.edu.au](http://aithm.jcu.edu.au)

**JCU Daintree Rainforest Observatory**  
[jcu.edu.au/dro](http://jcu.edu.au/dro)

**JCU Orpheus Island Research Station**  
[jcu.edu.au/oirs](http://jcu.edu.au/oirs)

**JCU Marine and Aquaculture Research Facility**  
[jcu.edu.au/marf](http://jcu.edu.au/marf)

**ARC Centre of Excellence for Coral Reef Studies**  
[coralcoe.org.au](http://coralcoe.org.au)

**Australian Institute of Marine Science - AIMS@JCU**  
[aims.jcu.edu.au](http://aims.jcu.edu.au)

**JCU eResearch Centre**  
[eresearch.jcu.edu.au](http://eresearch.jcu.edu.au)

**JCU Advanced Analytical Centre**  
[jcu.edu.au/aac](http://jcu.edu.au/aac)

**JCU Fletcherview Research Centre**  
[jcu.edu.au/fletcherview](http://jcu.edu.au/fletcherview)

# JCU study areas

*JCU students explore, discover and grow through research and teaching that makes a difference to people and societies, the natural world and built environment. Follow your passion and find a course that fits you.*



**TOP 100**  
in the world for Hospitality and Tourism Management  
2021 Global Ranking of Academic Subjects (GRAS)

## Business, Law and Finance

*JCU Business, Law and Finance is a leader in practical, professional skills and knowledge. A strong focus on professional development and multidisciplinary education enables JCU graduates to excel.*

### Bachelor of Business

Students can tailor this degree to suit their interests and career goals through a flexible combination of core subjects and a range of majors and minors.

Work integrated learning opportunities are embedded from year one and prepare students for a final year work placement to develop practical skills and make industry connections.

Majors available:

- Business Intelligence and Information Systems
- Hospitality and Tourism Management
- Human Resources Management
- International Business
- Management
- Marketing for the Digital Age
- Sports and Events Management.

Can also be studied via a joint degree:

- Bachelor of Business-Bachelor of Laws
- Bachelor of Business-Bachelor of Psychological Science
- Bachelor of Arts-Bachelor of Business
- Bachelor of Business and Environmental Science.

### MBA [2-year]

This flexible course can be tailored to suit a range of professional interests and career goals across fields including economics, marketing, international business or entrepreneurship. Students learn from leading industry experts and develop industry experience to prepare for global career options via a research project or a professional internship.

Majors available:

- Conflict Management and Resolution
- Entrepreneurship
- Finance (external only)
- Project Management.

### Master of International Tourism and Hospitality Management

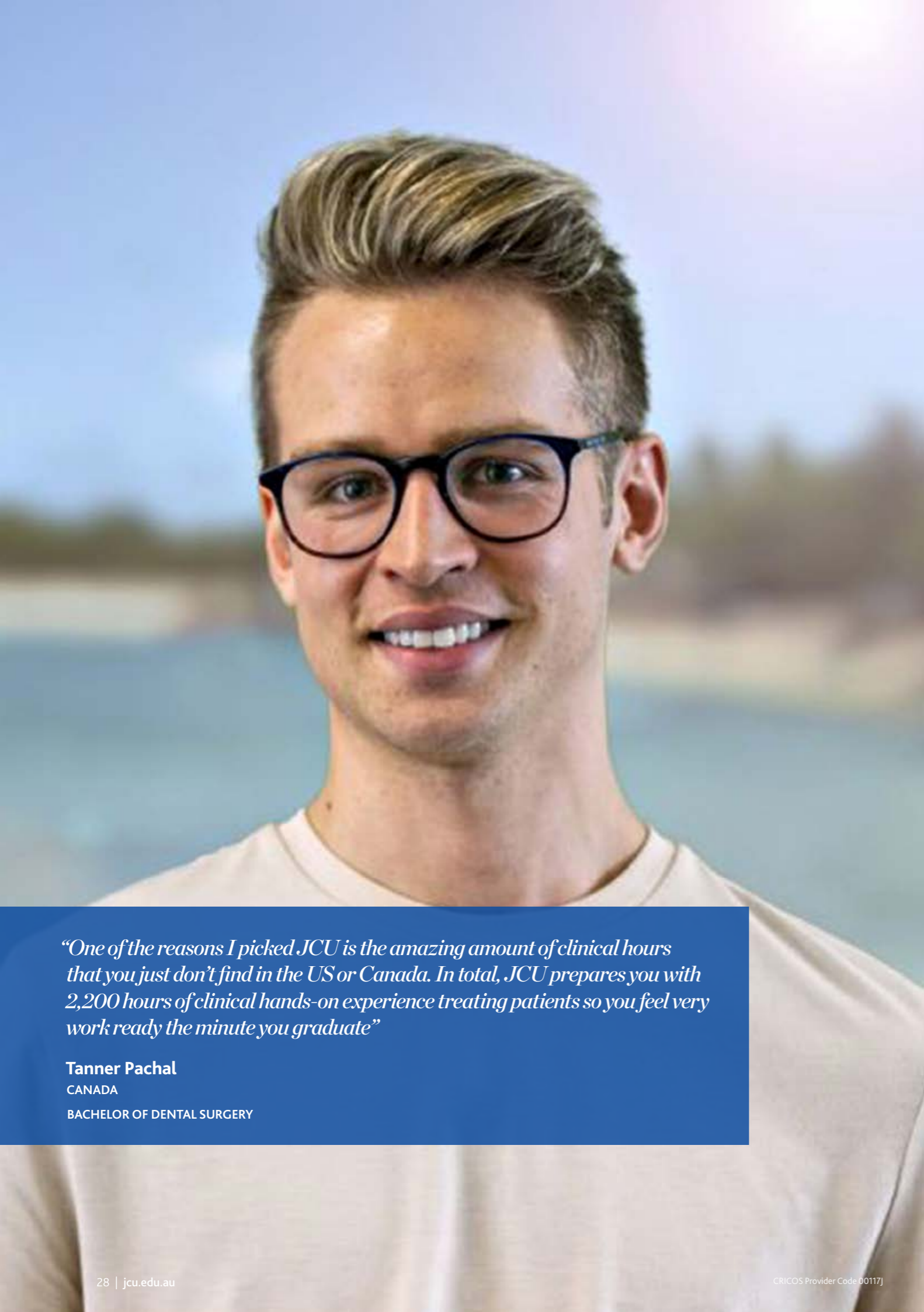
Become a leader in the hospitality and tourism sector with this specialist JCU postgraduate course. Advance your career and become a management-level professional with expert knowledge of business operations and administration.

The Master of International Tourism and Hospitality Management can be combined as a joint degree with the Master of Business Administration.



*“I looked at JCU and I was really impressed by the way JCU represents itself in the global market. Another thing that attracted me to JCU was the location.”*

**Noah Enrique Thomas**  
INDONESIA  
BACHELOR OF BUSINESS AND ENVIRONMENTAL SCIENCE



*“One of the reasons I picked JCU is the amazing amount of clinical hours that you just don’t find in the US or Canada. In total, JCU prepares you with 2,200 hours of clinical hands-on experience treating patients so you feel very work ready the minute you graduate”*

**Tanner Pachal**  
CANADA  
BACHELOR OF DENTAL SURGERY

# Medicine and Dentistry

*Be equipped with the skills to make an impact. JCU Medicine and Dentistry students gain valuable skills and experience through extensive clinical practice and graduate with the confidence to take on any challenge after undertaking placements in diverse communities.*

## Bachelor of Medicine, Bachelor of Surgery

The Bachelor of Medicine, Bachelor of Surgery is the first step to a career as a medical practitioner.

Our teaching combines integrated instruction in biomedical and social sciences, professional practice, and clinical medicine, in a tropical context.

Students gain the knowledge and expertise to diagnose and treat human injuries and disease and benefit from modern facilities, extensive clinical training and a superior learning location.

JCU’s Townsville campus medical precinct is adjacent to the Townsville University Hospital, which is the largest teaching hospital in regional Australia. Other clinical locations include Cairns Hospital, Mackay Base Hospital, the Mater hospitals in Townsville and Mackay, and numerous smaller teaching centres in rural and remote communities.

## Bachelor of Dental Surgery

JCU’s Bachelor of Dental Surgery provides students with the knowledge and skills for a rewarding career.

Our broad-based program includes all aspects of dental practice, with a focus on tropical, rural and Indigenous practice.

Students develop practical work skills in JCU’s world-class dental teaching complex, with a state-of-the-art clinical simulation laboratory, and benefit from over 2,000 hours of clinical practice in a range of settings from rural and remote communities to city areas.

The course is fully accredited with the Australian Dental Council – the national accreditation and standards body. Dentistry graduates are eligible for professional registration within Australia, New Zealand and Canada.

**NO. 1**  
**in Australia for Full-Time  
Employment, Median Salary**  
2022 Good Universities Guide, UG Dentistry



*“JCU provides an exceptional educational experience, with plenty of placement opportunities and interactions with all walks of life.”*

**Srikaveri Sriram**  
BOTSWANA  
BACHELOR OF MEDICINE, BACHELOR OF SURGERY



# Nursing and Midwifery

JCU is a leader in regional, rural and tropical healthcare sciences with an emphasis on authentic learning and compassionate care.

## Bachelor of Nursing Science [Pre-registration]

The JCU Bachelor of Nursing Science [Pre-registration] prepares students for careers in multiple settings from large metropolitan hospitals to rural and isolated practice clinics.

Students learn how to assess clients, communicate with people from diverse cultural backgrounds, plan and implement nursing interventions, and manage and evaluate nursing care in this professionally-accredited degree.

Extensive supervised professional practice and clinical experience in real world settings starts from year one.

Benefit from JCU's reputation as the Centre for Nursing and Midwifery Research, and the World Health Organisation's Collaborating Centre for Nursing and Midwifery Education and Research Capacity Building.

Graduates will be eligible for registration as a Registered Nurse (Division 1) with the Nursing and Midwifery Board of Australia.

# Society and Culture

JCU Humanities, Creative Arts and Social Sciences programs empower critical and creative thinking. Graduates have strong analytical skills and a solution-based approach.

## Master of Social Work (Professional Qualifying)

Our Master of Social Work (Professional Qualifying) program is recognised by the Australian Association of Social Workers.

Subjects cover the unique and complex challenges of social work, including global issues and international perspectives.

Students gain practical professional experience and acquire valuable hands-on experience working with individuals, families, groups and communities through on-campus classes and residential workshops.

*"We don't only study what's written in the book. They invite guest lecturers from the profession, from the field itself, so it gives us knowledge of what is going on currently in the market. The entire course curriculum is outstanding and that's the reason I'm here."*

**Chandandeep Patel**

INDIA  
MASTER OF SOCIAL WORK (PROFESSIONAL QUALIFYING)



*"It is refreshing to find the curiosity and interest in every student on campus. We are all here because we want to learn and not because we must. And that willingness to learn reflects in everyone's engagement and openness."*

**Carmen Bittner**

GERMANY  
BACHELOR OF NURSING SCIENCE (PRE-REGISTRATION)



NO. 2

in Australia for  
Median Salary

2022 Good Universities Guide, UG Nursing

TOP 20

in Australia for  
Social Sciences

2021 Quality Indicators for Learning and Teaching (QILT)  
Graduate Outcomes Survey, PG study area

# Science, Marine Science, Technology, Engineering and Maths

*With access to a unique tropical learning environment and the Great Barrier Reef right on our doorstep, JCU students are ready to lead in a fast-paced world.*

## Bachelor of Science

The JCU Bachelor of Science is a flexible program, allowing students to tailor their studies to suit their interests and career plans. The degree covers the fundamentals of science in year one. Students then select one or two majors to continue to build knowledge and skills in their chosen discipline areas.

Students undertake research in unrivalled locations including the World-Heritage listed Great Barrier Reef and Daintree Rainforest, and learn in state-of-the-art research and teaching facilities such as JCU's Science Place.

Students can choose one or two majors.

Majors available:

- Aquaculture Science and Technology
- Chemistry
- Data Science
- Earth Science
- Marine Biology
- Mathematics
- Molecular and Cell Biology
- Physics
- Zoology and Ecology.

A Bachelor of Science (Honours) degree is available to high-achieving students.

## Bachelor of Marine Science

Pursue your passion for the ocean and marine life while studying in JCU's advanced research aquariums and laboratories.

Undertake research at the JCU Orpheus Island Research Station, or at coral reefs, islands and seagrass and mangrove environments. Build capabilities in the use of seabed mapping and fish assessment sonar, oceanographic sensors, and use a range of technologies to gather data above and below the waves.

High achieving students can continue their studies through the Bachelor of Science (Honours) degree.

## Master of Science 1.5 years (full-time)

This flexible course includes a range of diverse majors and electives to allow students to extend and specialise core knowledge components.

Students learn from research and industry experts through practical experiences in varied environments.

Majors available:

- Aquaculture Science and Technology
- Environmental Earth Science
- Environmental Management
- Fisheries Science and Management
- Geology
- Global Change Biology
- Marine Biology
- Tropical Biology and Conservation.

## Master of Science (Professional) 2 years (full-time)

The Master of Science (Professional) includes the same majors as the Master of Science, but also includes advanced coursework subjects and either an independent research project or an industry-based project. The research project is a pathway towards a PhD by research program.

Majors available:

- Aquaculture Science and Technology
- Environmental Earth Science
- Environmental Management
- Fisheries Science and Management
- Geology
- Global Change Biology
- Marine Biology
- Tropical Biology and Conservation.



*“James Cook University has a very good support system, so there is always someone to ask for help if you need it, whether it’s with academic writing or if you just want to talk to somebody. Café International on Tuesday mornings is a great way to meet other international students studying at JCU.”*

**Vesla Hauan Nilsen**  
NORWAY  
BACHELOR OF SCIENCE



*“There are so many opportunities to get hands-on experience in the field. If you are interested in volunteering and going on field trips, you just need to look, you will find them!”*

**Sanna Perrson**  
SWEDEN  
BACHELOR OF MARINE SCIENCE

NO. 1

in the world for Marine and Freshwater Biology

2017 Center for World University Rankings (CWUR)

TOP 100

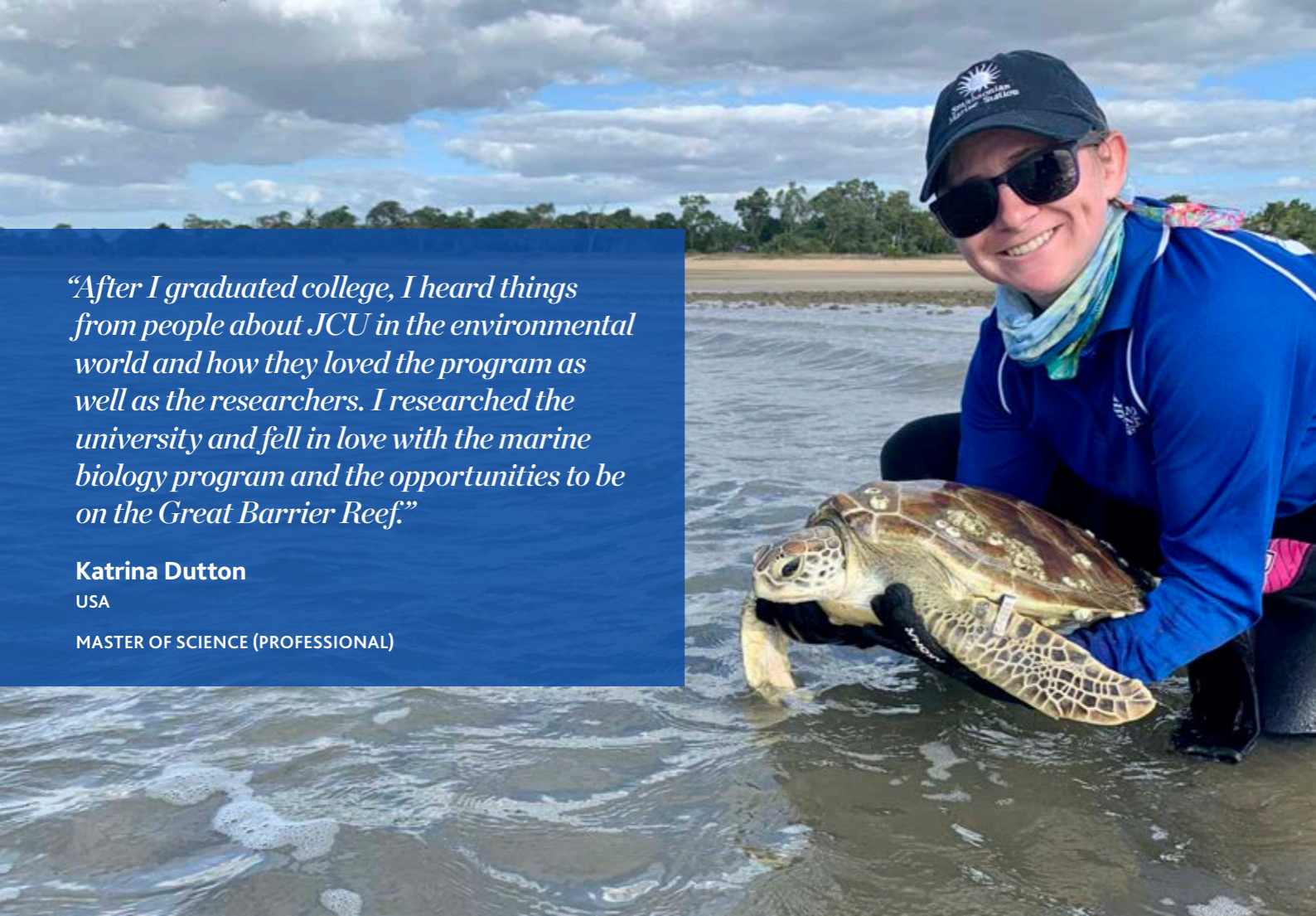
in the world for Earth and Marine Sciences

2022 QS World University Rankings

NO. 25

in the world for Ecology

2021 Global Ranking of Academic Subjects (GRAS)



*“After I graduated college, I heard things from people about JCU in the environmental world and how they loved the program as well as the researchers. I researched the university and fell in love with the marine biology program and the opportunities to be on the Great Barrier Reef.”*

**Katrina Dutton**  
USA  
MASTER OF SCIENCE (PROFESSIONAL)

**NO. 2**  
in the world for  
**Biodiversity Conservation**  
2017 Center for World University Rankings (CWUR)

**TOP 75**  
in the world for Mining and  
**Mineral Engineering**  
2021 Global Ranking of Academic Subjects (GRAS)

**Master of Marine Biology**

Where better to study Marine Biology than at the university ranked number one in the world for Marine and Freshwater Biology?  
Students gain unrivalled practical experience in unique locations including the JCU Orpheus Island Research Station on the Great Barrier Reef, and work with emerging technologies for marine ecosystem monitoring.  
Professional experience can be further developed via an internship option with leading organisations in North Queensland, further afield in Australia, or internationally. An optional research project is also available.

**Master of Engineering (Professional)**

This robust postgraduate program develops advanced skills and knowledge highly-valued within the engineering sector.  
Students study general and advanced engineering and develop professional skills in risk engineering, asset management, safety in design, business leadership and data analytics.

**Master of Information Technology**

JCU Master of Information Technology graduates are highly skilled and well equipped to solve technology challenges of the future.  
The degree includes foundation and core subjects to foster advanced critical analysis skills and develop comprehensive knowledge of tools and technologies. Students benefit from the opportunity to gain hands-on experience applying new skills to practical problems and learn from industry experts.  
Graduates are eligible to become an Associate Member of the Australian Computer Society (ACS).



*“The Master of Marine Biology will provide graduates with the skills most sought after by marine sector employers. Students develop specialist knowledge in different fields of marine science, and gain hands-on experience of professional practice with either a focus on knowledge discovery or work integrated learning.”*

**Associate Professor Mia Hoogenboom**  
LECTURER  
MARINE BIOLOGY DISCIPLINE, COLLEGE OF SCIENCE AND ENGINEERING



*“In the villages where I grew up, when the sun sets, people are left in the dark. Shops and markets have no choice but to shut down until the next day. I wanted to help villages like mine to tap into readily available solar energy to light up the night.”*

**Douglas Muthamia**  
KENYA  
MASTER OF ENGINEERING (PROFESSIONAL)

Want more JCU international student stories?  
 [www.instagram.com/jamescookuniversity](https://www.instagram.com/jamescookuniversity)  
 [www.youtube.com/jamescookuniversity](https://www.youtube.com/jamescookuniversity)

# Undergraduate courses and fees

The fees listed are in Australian dollars and are based on the annual international tuition fee for students commencing in 2023. Annual (per year) international tuition fee equates to 24 credit points. Tuition fees may increase each year.

Please note that some majors and subjects are not available on all campuses and that some courses or subjects are not available every semester or trimester intake.

Please visit [jcu.edu.au](http://jcu.edu.au) for the most up-to-date information on courses, intakes, majors, subject availability and fees.

Course	Duration (years)	Campus/ Mode	Intakes	English Band Level	Minimum course prerequisites	CRICOS course code	2023 Tuition fee (per year in AS)
<b>BACHELOR DEGREES</b>							
<b>Bachelor of Arts<sup>2</sup></b> Majors: Anthropology, Archaeology, Criminology, Design and Creative Arts, English, History, Human Geography, Human Services, Indigenous Studies, Languages and Linguistics, Politics and International Relations, Psychology Studies, Sociology	3	C T S	Start Semester 1, Start Semester 2, Trimester intake (trimesters offered in Singapore)	1	English	010346B	\$30,960
<b>Bachelor of Arts–Bachelor of Business</b>	4	C T	Start Semester 1	1	English	036644M	\$32,960
<b>Bachelor of Arts–Bachelor of Laws</b>	5	C T	Start Semester 1, Start Semester 2	2	English	013247C	\$32,960
<b>Bachelor of Arts–Bachelor of Science</b>	4	C T	Start Semester 1, Start Semester 2	1	English, Mathematical Methods. Students considering the Chemistry or Molecular and Cell Biology majors require Chemistry	028993A	\$37,960
<b>Bachelor of Biomedical Sciences</b> Majors: Medicinal and Pharmaceutical Sciences, Microbiology and Immunology, Molecular and Cell Biology, Physiology and Pharmacology	3	T	Start Semester 1	2	English, Chemistry, Mathematical Methods	013347K	\$37,960
<b>Bachelor of Business</b> Majors: Business Intelligence & Information Systems, Hospitality & Tourism Management <sup>1</sup> , Human Resources Management, International Business <sup>1</sup> , Management, Marketing for the Digital Age, Sports & Events Management.	3	C T S B	Start Semester 1	1	English	026830C	\$32,960
<b>Bachelor of Business and Environmental Science</b> Major: Aquaculture	3	T S	Start Semester 1	1	English	070556F	\$34,960
<b>Bachelor of Business–Bachelor of Laws</b>	5	C T	Start Semester 1, Start Semester 2	2	English	031833B	\$32,960
<b>Bachelor of Business–Bachelor of Psychological Science</b>	4	T	Start Semester 1, Start Semester 2	1	English	085453A	\$34,960
<b>Bachelor of Clinical Sciences (Honours)</b>	4	T	Start Semester 1, Start Semester 2	2	English, Chemistry, Mathematical Methods	096261G	\$37,960
<b>Bachelor of Commerce</b> Majors: Accounting, Banking and Finance, Economics, Financial Management, International Trade	3	C T S B	Start Semester 1	1	English	0101385	\$32,960
<b>Bachelor of Dental Surgery</b>	5	C	Start Semester 1	3b	English, Chemistry, Mathematical Methods	073997A	\$71,960
<b>Bachelor of Education (Early Childhood Education)*</b>	4	T S	Start Semester 1, Start Semester 2	See p.34	English, General Mathematics or Mathematical Methods or Specialist Mathematics, plus a General Science subject	081938A	\$30,960
<b>Bachelor of Education (Primary)*</b>	4	C T	Start Semester 1, Start Semester 2	See p.34	English, General Mathematics or Mathematical Methods or Specialist Mathematics, plus a General Science subject	081941F	\$30,960
<b>Bachelor of Education (Secondary) *</b>	4	C T	Start Semester 1, Start Semester 2	See p.34	English, General Mathematics or Mathematical Methods or Specialist Mathematics. Mathematics or Physics as teaching areas must have Mathematical Methods. Chemistry teaching area must have Chemistry. Refer to Course Handbook for further Course prerequisites.	081942E	\$30,960
<b>Bachelor of Engineering (Honours)</b> Majors: Chemical, Civil, Electrical and Electronic, Electronic Systems & Internet of Things, Mechanical	4	C T	Start Semester 1, Start Semester 2	1	English, Mathematical Methods	085458G	\$37,960
<b>Bachelor of Engineering (Honours)–Bachelor of Information Technology</b>	5	C T	Start Semester 1, Start Semester 2	1	English, Mathematical Methods	085411M	\$37,960
<b>Bachelor of Engineering (Honours)–Bachelor of Science</b>	5	C T	Start Semester 1, Start Semester 2	1	English, Mathematical Methods. Students considering the Chemistry or Molecular and Cell Biology major will require Chemistry	085380B	\$37,960
<b>Bachelor of Environmental Science and Management</b> Majors: Biodiversity Assessment and Management, Environmental Practice, Land and Water Management	3	C T	Start Semester 1, Start Semester 2	1		108976B	\$35,160
<b>Bachelor of Geology</b>	3	C T	Start Semester 1, Start Semester 2	1		062452C	\$37,960
<b>Bachelor of Information Technology</b>	3	C T S B	Start Semester 1, Start Semester 2	1	English	010438J	\$32,960
<b>Bachelor of Laws</b>	3	C T	Start Semester 1, Start Semester 2	2	English	0102134	\$32,960
<b>Bachelor of Marine Science</b>	3	T	Start Semester 1, Start Semester 2	1		056552E	\$43,960

**LEGEND** C JCU Cairns T JCU Townsville S JCU Singapore B JCU Brisbane Start Semester 1 Start Semester 2 Trimester intake

Course	Duration (years)	Campus/ Mode	Intakes	English Band Level	Minimum course prerequisites	CRICOS course code	2023 Tuition fee (per year in AS)
<b>Bachelor of Medical Laboratory Science (Honours)</b>	4	T	Start Semester 1	2	English, Chemistry, Mathematical Methods	094675A	\$37,960
<b>Bachelor of Medicine, Bachelor of Surgery</b>	6	T	Start Semester 1	3b	English, Chemistry, Mathematical Methods	043052K	\$65,960
<b>Bachelor of Nursing Science</b>	3	C T	Start Semester 1, Start Semester 2	3c	English	010441C	\$34,960
<b>Bachelor of Occupational Therapy (Honours)</b> Majors: Professional Honours, Research Honours	4	T	Start Semester 1, Start Semester 2	3a	English, plus one of: Biology, Chemistry, Physics, Health, Psychology or Physical Education	094677K	\$37,960
<b>Bachelor of Pharmacy (Honours)</b> Majors: Professional Honours, Research Honours	4	T	Start Semester 1, Start Semester 2	3a	English, Chemistry, Mathematical Methods	094678J	\$37,960
<b>Bachelor of Physiotherapy</b>	4	T	Start Semester 1, Start Semester 2	3a	English, Mathematical Methods plus one of: Biology, Chemistry, Physics, Health, Physical Education or Psychology	053801F	\$41,200
<b>Bachelor of Planning</b>	4	C T	Start Semester 1, Start Semester 2	1	English	056694B	\$34,960
<b>Bachelor of Psychological Science</b>	3	T S	Start Semester 1, Start Semester 2	1	English	085452B	\$34,960
<b>Bachelor of Advanced Science</b> Majors: Advanced Molecular and Cell Biology, Aquaculture Science & Technology, Chemistry, Data Science, Earth Science, Marine Biology, Mathematics, Physics, Zoology & Ecology.	3	C T	Start Semester 1, Start Semester 2	1	English, Mathematical Methods	092515M	\$39,000
<b>Bachelor of Science</b> Majors: Aquaculture Science & Technology, Chemistry, Data Science, Earth Science, Internet of Things, Marine Biology, Mathematics, Molecular & Cell Biology, Physics, Zoology and Ecology	3	C T S	Start Semester 1, Start Semester 2	1		076290A	\$37,960
<b>Bachelor of Science–Bachelor of Laws<sup>3</sup></b>	5	C T	Start Semester 1, Start Semester 2	2	English, Mathematical Methods. Students considering the Chemistry or Molecular and Cell Biology majors will require Chemistry	017881M	\$37,960
<b>Bachelor of Social Work</b>	4	C T S (Brisbane tri 1 only)	Start Semester 1, Start Semester 2	3c	English	010351E	\$30,960
<b>Bachelor of Speech Pathology (Honours)</b>	4	T	Start Semester 1, Start Semester 2	See p.34	English, plus one of: Biology, Chemistry, Physics, Psychology or Health	094679G	\$41,200
<b>Bachelor of Sport and Exercise Science</b>	3	T	Start Semester 1, Start Semester 2	2	English; General Mathematics or Mathematical Methods or Specialist Mathematics	029013A	\$34,960
<b>Bachelor of Sport and Exercise Science–Bachelor of Psychological Science</b>	5	T	Start Semester 1, Start Semester 2	2	English; General Mathematics or Mathematical Methods or Specialist Mathematics	093297G	\$34,960
<b>Bachelor of Tourism, Hospitality and Events</b>	3	S B	Start Semester 1, Start Semester 2	1	English	0101080	\$32,960
<b>Bachelor of Veterinary Science (Honours)</b>	5	T	Start Semester 1, Start Semester 2	3c	English, Mathematical Methods, Chemistry	105718M	\$65,960

\* All applicants for initial teacher education courses must satisfy both academic and non-academic entry criteria. QTAC assesses applicants' non-academic capabilities using an instrument developed with the Australian Council of Deans of Education. Students must meet English language proficiency requirements for teacher registration in Australia, either on entry to or graduation from the program.

<b>DIPLOMAS</b>							
<b>Diploma of Higher Education</b> Major: Business	1	T, C	Start Semester 1	1	English	082841B	\$30,960
<b>Diploma of Higher Education</b> Majors: Business Studies; Education, Engineering and Applied Science; General Studies; Information Technology; Science; Social Work; Society and Culture	1	T, C, S	Start Semester 1, Start Semester 2	1	Nil	082840C	\$30,960
<b>Diploma of Higher Education</b> Major: Health	1	T, C, S	Start Semester 1, Start Semester 2	2	Nil	082840C	\$30,960

**LEGEND** C JCU Cairns T JCU Townsville S JCU Singapore B JCU Brisbane Start Semester 1 Start Semester 2 Trimester intake

# Undergraduate academic entry requirements

The following scores are a guide for entry into JCU undergraduate courses at school-leaving level. Students with existing university qualifications (or equivalent) will be considered for entry and may be eligible for credit. Joint degree entry requirements are determined by the degree with the highest entry score.

Undergraduate Degrees and Diplomas	Australian Tertiary Admissions Rank (ATAR)	Bangladesh Higher Secondary Certificate	Canada Secondary School Diploma	China Senior Secondary School Graduation Certificate	Danish Upper Secondary School Certificate	GCE A Levels	German Abitur	Hong Kong Diploma of Secondary Education (HKDSE)	All India Exam Senior School Certificate & CISCE/State Board	International Baccalaureate (IB Diploma)	Kenyan Secondary Certificate of Education	Malaysia - Sijil Tinggi Pelajaran Malaysia (STPM)	Nepalese Proficiency Certificate/School Leaving Certificate Examination	Norway Vitnemal fra den Videregående Skole/Vitnemal for Videregående opplæring	Philippines Certificate or Diploma of Senior School (Katunayan or Katibayan) Academic track	PNG - Upper School Certificate	South African National Senior Certificate (UMALUSI)	Sri Lankan General Certificate of Education (Advanced Level)	Sweden Avgångsbetyg/Slutbetyg från Gymnasieskola & Högskoleförberedande Examen	United States of America ACT/SAT score	United States of America High School Diploma
Bachelor of Arts	59.4	4.0	50	73	7	4	4	13	60/65	24	7	6	66/2.65	2.77	75	3	3.69	1.7	1.2	20/940	2.4
Bachelor of Biomedical Sciences	65.4	NA	51	81	7.3	5	3.9	15	63/68	24	8	6.5	NA	3.08	NA	NA	4.08	1.9	1.5	21/980	NA
Bachelor of Business	59.4	4.0	50	73	7	4	4	13	60/65	24	7	6	66/2.65	2.77	75	3	3.69	1.7	1.2	20/940	2.4
Bachelor of Business and Environmental Science	63.2	4.0	50	78	7.2	4.5	3.9	14	62/67	24	8	6.3	73/2.9	2.95	80	3.4	3.94	1.8	1.4	21/960	2.6
Bachelor of Clinical Sciences (Honours)	69.15	NA	56	86	7.6	5.5	3.6	16	65/70	25	8.5	6.7	NA	3.38	NA	NA	4.38	2	1.6	21/980	NA
Bachelor of Commerce	59.4	4.0	50	73	7	4	4	13	60/65	24	7	6	66/2.65	2.77	75	3	3.69	1.7	1.2	20/940	2.4
Bachelor of Dental Surgery*	-	NA	89	NA	12	16	1.7	26	92/NA	40	NA	10.8	NA	5.6	NA	NA	6.13	3.6	4.0	33/1400	NA
Bachelor of Education	70	NA	61	91	7.8	6	3.3	18	68/73	26	9	6.9	NA	3.68	NA	NA	4.68	2.2	1.9	22/1000	NA
Bachelor of Engineering (Honours)	75	4.6	67	97	8.3	7	3	20	70/75	28	9.5	7.4	NA	4.05	NA	NA	5.05	2.4	2.4	24/1080	NA
Bachelor of Environmental Science and Management	63.2	4.0	50	78	7.2	4.5	3.9	14	62/67	24	8	6.3	73/2.9	2.95	80	3.4	3.94	1.8	1.4	21/960	2.6
Bachelor of Geology	66.5	4.1	52	82	7.4	5	3.8	15	64/69	24	8	6.5	77/3.1	3.15	84	3.6	4.15	1.9	1.5	21/980	2.8
Bachelor of Information Technology	63.2	4.0	50	78	7.2	4.5	3.9	14	62/67	24	8	6.3	73/2.9	2.95	80	3.4	3.94	1.8	1.4	21/960	2.6
Bachelor of Laws	75.7	4.5	63	93	8	6.5	3.2	19	69/74	27	9.5	7.1	92/3.68	3.83	92	4.5	4.75	2.3	2.1	22/1020	3.4
Bachelor of Marine Science	78.1	4.6	67	97	8.3	7	3	20	70/75	28	9.5	7.4	97/3.87	4.05	94	4.8	4.98	2.4	2.4	24/1080	3.6
Bachelor of Medical Laboratory Sciences (Honours)	65.4	NA	56	86	7.6	5.5	3.6	16	65/70	25	8.5	6.7	NA	3.38	NA	NA	4.38	2	1.6	21/980	NA
Bachelor of Medicine, Bachelor of Surgery*	-	NA	86	NA	11	14	1.8	25	90/NA	38	NA	10	NA	5.2	NA	NA	5.93	3.3	3.8	32/1380	NA
Bachelor of Nursing Science	66.45	4.1	52	82	7.4	5	3.8	15	64/69	24	8	6.5	77/3.1	3.15	84	3.6	4.15	1.9	1.5	21/980	2.8
Bachelor of Occupational Therapy (Honours)	72.45	NA	59	90	7.8	6	3.4	17	88/92	26	9	6.8	NA	3.6	NA	NA	4.6	2.1	1.8	22/1000	NA
Bachelor of Pharmacy (Honours)	76	NA	68	98	8.5	7.5	2.9	20	72/77	29	9.5	7.5	NA	4.13	NA	NA	5.13	2.5	2.5	24/1100	NA
Bachelor of Physiotherapy	92	NA	79	NA	10	10	2.2	23	85/90	33	10.5	9	NA	4.73	NA	NA	5.73	3	3.3	28/1270	NA
Bachelor of Planning	63.2	4.0	50	78	7.2	4.5	3.9	14	62/67	24	8	6.3	73/2.9	2.95	80	3.4	3.94	1.8	1.4	21/960	2.6
Bachelor of Psychological Science	69.35	4.3	56	86	7.6	5.5	3.6	16	65/70	25	8.5	6.7	82/3.29	3.38	86	3.9	4.38	2	1.6	21/980	3
Bachelor of Advanced Science	92	NA	83	NA	10.6	10.5	2	24	88/92	35	11	10	NA	4.93	NA	NA	5.93	3.1	3.5	30/1330	NA
Bachelor of Science	66.5	4.1	52	82	7.4	5	3.8	15	64/69	24	8	6.5	77/3.1	3.15	84	3.6	4.15	1.9	1.5	21/980	2.8
Bachelor of Social Work	66.5	4.1	52	82	7.4	5	3.8	15	64/69	24	8	6.5	77/3.1	3.15	84	3.6	4.15	1.9	1.5	21/980	2.8
Bachelor of Speech Pathology (Honours)	75.7	NA	63	93	8	6.5	3.2	19	69/74	27	9.5	7.1	NA	3.83	NA	NA	4.75	2.3	2.1	22/1020	NA
Bachelor of Sport and Exercise Science	69.35	NA	56	86	7.6	5.5	3.6	16	65/70	25	8.5	6.7	NA	3.38	NA	NA	4.38	2	1.6	21/980	NA
Bachelor of Tourism, Hospitality & Events	59.4	4.0	50	73	7	4	4	13	60/65	24	7	6	66/2.65	2.77	75	3	3.69	1.7	1.2	20/940	2.4
Bachelor of Veterinary Science (Honours)	-	NA	86	NA	11	14	1.8	25	90/NA	38	NA	10	NA	5.2	NA	NA	5.93	3.3	3.8	32/1380	NA
Diploma of Higher Education (except Business major)	50	3.5	50	60	6	3	4	11	50/55	9	6	5	50/2.00	2.31	75	2	**	1.5	1.1	-	2

\*Scores provided are indicative minimum thresholds only. Admission is based on special entry requirements in addition to academic achievement.

Bangladesh Higher Secondary Certificate: Grade average of final year results: A+/80-100 = 5.0, A/70-79 = 4.0, A-/60-69 = 3.5, B/50-59 = 3.0, C/40-49 = 2.0, D/33-39 = 1.0, F/0-32 = 0.0. 1 is a pass.

Canada Secondary School Diploma: Average of the best 5 final year subjects as a %. Only examined subjects to be included in the calculation. Note: Ontario Secondary School Diploma (OSSD or OAC) to be calculated as an average of the best 6 final year subjects as a %.

Chinese Senior Secondary Graduation Certificate: Calculated as a grade average of Senior Secondary Year 12 results.

Danish Upper Secondary School: Grade average of final year results where -3=0, 0=4, 02=6, 4=7, 7=8.5, 10=10, 12=12.5.

GCE A LEVELS: A total score of calculated from a maximum three A Level subjects or a combination of A Level and AS Level subjects. The A Level subjects scores are calculated as follows: A\*=6, A=5, B=4, C=3, D=2, E=1. Advanced Supplementary Levels (AS) are the equivalent of half a subject at A Level and therefore two AS Level subjects can be used in lieu of each A Level subject, calculated as follows: a=2.5, b=2, c=1.5, d=1, e=0.5. At least one A Level subject to meet the direct Bachelor entry.

German Abitur: The final mark of the Zeugnis der Allgemeinen Hochschulreife (Abitur) is calculated by incorporating the grades from throughout the two year qualification phase.

Hong Kong Diploma of Secondary Education (HKDSE): Combined total

of the best five subjects including 4 core subjects where 5\*\*=7, 5\*=6, 5=5, 4=4, 3=3, 2=2, 1=1, A\*=6, A=5, B=4, C=3, D=2, E=1, Attained with Distinction (I)=4, Attained with Distinction (II)=3, Attained=2, Unattained=1, A=5, B=4, C=3, D=2, E=1.

India: Calculated on a percentage of the best four academic subjects in XII. Non-academic subjects such as Physical Education, Music Vocal, Vocational subjects, Painting to be excluded into calculation.

IB Diploma: A total score stated on IB Diploma certificate. Grading scheme of IB Diploma is, 7= Excellent, 6= Very good, 5= Good, 4= Satisfactory, 3= Mediocre, 2= Poor, 1= Very poor.

Kenya: Calculated as a grade average of best 7 subjects.

Malaysia STPM: combined a total of best three academic subjects: A=4.0, A-3.67, B+3.33, B=3.0, B-2.67, C+=2.33, C=2.0, C-=1.67, D+=1.33, D=1.0, F=0.

Nepal: Grade average of final year results.

Norway: Grade average of final year results.

Philippines: Grade average of final year (Grade 12) results.

PNG: PNG Upper Secondary Certificate from approved high schools are eligible for direct Bachelor entry. Grade average of best 5 subjects excluding Personal Development and Religious Education. Calculation must include either Language and Literature or Applied English. A=5, B=4, C=3, D=2, E=1 (Advanced Mathematics subject to be weighted as 1.6 subjects).

Sri Lanka: Calculated as a grade average of best 3 Advanced Level subjects, where A (Distinction)=4, B (Very good pass)=3, C (Credit pass)=2, S (Ordinary pass)=1, F (Weak/failure)=0. At least one A Level subject to meet the direct Bachelor entry.

Sweden: Grade average from all subjects on final transcripts/certificate where A=5, B=4, C=3, D=2, E=1, F=0.

USA: Applicants must also provide evidence of successful completion of the USA High School Diploma. Grade average of final year (Grade 12) results.

# Postgraduate coursework courses and fees

The fees listed are in Australian dollars and are based on the annual international tuition fee for students commencing in 2023. Annual international tuition fee equates to 24 credit points. Tuition fees may increase each year.

Please note that some majors and subjects are not available on all campuses and that some courses or subjects are not available every semester or trimester intake.

Please visit [jcu.edu.au](http://jcu.edu.au) for the most up-to-date information on courses, intakes, majors, subject availability and fees.

Course	Duration (years)	Campus/ Mode	Intakes	English Band Level	Minimum prerequisites	CRICOS Course Code	2023 Tuition fee (per year in AS)
<b>MASTERS BY COURSEWORK</b>							
<b>Master of Business Administration [2-year]</b>	2	T P	Start Semester 1	2	Completion of an AQF level 7 bachelor degree; or equivalent.	107829K	\$34,960
<b>Master of Business Administration–Master of Conflict Management and Resolution</b>	2	T	Start Semester 1	2	Completion of an AQF level 7 bachelor degree in a business or human services discipline; or equivalent.	069811F	\$34,960
<b>Master of Clinical Exercise Physiology</b>	1.5	T	Start Semester 1	3b	Completion of an ESSA-accredited AQF level 7 bachelor of sport and exercise science program; or equivalent overseas qualification; or current ESSA accreditation as an exercise scientist.	102438K	\$37,960
<b>Master of Conflict Management and Resolution</b>	1.5	T	Start Semester 1	2	Completion of an AQF level 7 degree; or equivalent.	096224A	\$37,960
<b>Master of Data Science (Professional)</b>	2*	C	Start Semester 1	2	Completion of an AQF level 7 bachelor degree, or a minimum of five years relevant IT or Data Science/Analytics experience; or equivalent.	102256E	\$34,960
<b>Master of Education–Master of Business Administration</b> Majors: Global Contexts	2	B	Start Semester 1	2	Completion of an AQF level 7 degree.	096264D	\$34,960
<b>Master of Engineering (Professional)</b> Majors: Electrical and Renewable Energy, Internet of Things and Data Engineering, Technology and Management, Waste Resource Management	2	C T	Start Semester 1	1	Completion of a four-year AQF level 7 Bachelor of Engineering, or equivalent, in a discipline cognate with the major studied in this master's degree.	098486G	\$37,960
<b>Master of Global Development</b>	2	C	Start Semester 1	1	Completion of an AQF level 7 degree; or equivalent.	098478G	\$32,960
<b>Master of Governance and Leadership</b> Majors: Conflict Management and Resolution, Economics, Leadership	1.5	T	Start Semester 1	2	Completion of an AQF level 7 bachelor degree plus 4 years relevant employment/work experience in management, governance or leadership roles; or other qualifications with relevant professional experience.	096857A	\$34,960
<b>Master of Information Technology</b> Majors: Business Informatics, Computing, Interactive Technologies and Game Design	2	C S B	Start Semester 1	2	Completion of an AQF level 7 bachelor degree or other qualifications with relevant professional experience.	084823K	\$34,960
<b>Master of Information Technology–Master of Business Administration</b>	2	C S B	Start Semester 1	2	Completion of an AQF level 7 bachelor degree in an information technology cognate course.	053817J	\$34,960
<b>Master of International Tourism and Hospitality Management</b>	2	C S B	Start Semester 1	2	Completion of an AQF level 7 bachelor degree; or equivalent.	081132F	\$34,960
<b>Master of International Tourism and Hospitality Management–Master of Business Administration</b>	2	C S B	Start Semester 1	2	Completion of an AQF level 7 bachelor degree in a business or tourism-related discipline, or equivalent.	063678K	\$34,960
<b>Master of Marine Biology</b> Majors: Professional and Research	2	T	Start Semester 1	1	Completion of an AQF level 7 bachelor degree in science with a minimum GPA of 5.0 (65%); or equivalent.	107243C	\$43,960
<b>Master of Medical Science</b> Majors: Clinical Sciences, Future Leaders in Tropical Research, Medical Laboratory Science	2	T	Start Semester 1	2	Completion of an AQF level 7 Biomedical Science degree or Medical Laboratory Science degree; or equivalent.	096262F	\$41,200
<b>Master of Professional Accounting</b>	2	B	Start Semester 1	2	Completion of an AQF level 7 bachelor degree in a non-accounting discipline, or equivalent.	081135C	\$34,960
<b>Master of Professional Accounting–Master of Business Administration</b>	2	B	Start Semester 1	2	Completion of an AQF level 7 bachelor degree in a business discipline other than accounting, or equivalent.	055156C	\$34,960
<b>Master of Psychology (Clinical)</b>	2	T S	Start Semester 1	3c	Completion of an AQF level 8 bachelor honours degree with Class 1 or 2A honours from a course accredited by the Australian Psychology Accreditation Council or equivalent qualification from an overseas institution.	019793F	\$41,200
<b>Master of Public Health</b> Majors: Aeromedical Retrieval	1.5	T	Start Semester 1	2	Completion of an AQF level 7 bachelor degree in a relevant health discipline or equivalent.	040170F	\$37,960
<b>Master of Public Health–Master of Business Administration</b>	2	T	Start Semester 1	2	Completion of an AQF level 7 bachelor degree in a health science discipline or equivalent.	040171E	\$37,960
<b>Master of Public Health–Master of Global Development</b>	2	C T	Start Semester 1	2	Completion of an AQF level 7 bachelor degree in a relevant health discipline or equivalent.	107244B	\$37,960
<b>Master of Public Health and Tropical Medicine</b>	1.5	T	Start Semester 1	2	Completion of an AQF level 7 bachelor degree in a health science discipline or equivalent.	026849C	\$37,960

Course	Duration (years)	Campus/ Mode	Intakes	English Band Level	Minimum prerequisites	CRICOS Course Code	2023 Tuition fee (per year in AS)
<b>Master of Science (Professional)</b> Majors: Aquaculture Science and Technology, Environmental Earth Science, Environmental Management, Fisheries Science and Management, Geology, Tropical Biology and Conservation	2	C T	Start Semester 1	1	Completion of an AQF level 7 bachelor degree in science with a minimum GPA of 5.0 (65%); or equivalent.	095865J	\$41,200
<b>Master of Science</b> Majors: Aquaculture Science and Technology, Environmental Earth Science, Environmental Management, Fisheries Science and Management, Geology, Tropical Biology and Conservation	1.5	C T	Start Semester 1	1	Completion of an AQF level 7 bachelor degree in science with a minimum GPA of 5.0 (65%); or equivalent.	074894M	\$41,200
<b>Master of Social Science</b> Majors: Asia-Pacific Governance and Development, Environment and Heritage	1.5	C T	Start Semester 1	1	Completion, within the previous five years, of an AQF level 7 bachelor degree in a social science discipline with an overall GPA of 5.0 (65%); or completion of an AQF level 8 qualification in any discipline; or equivalent.	072634C	\$32,960
<b>Master of Social Work (Professional Qualifying)</b>	2	C T	Start Semester 1	3c	Completion of an approved AQF level 7 bachelor degree in a relevant discipline other than an Australian Association of Social Workers (AASW) recognised social work degree that contains at least one year of full-time studies in social and behavioural sciences.	070091A	\$30,960
<b>Master of Teaching and Learning (Primary)</b>	2	C T	Start Semester 1	See pg.34	Completion of an AQF level 7 bachelor degree; or equivalent qualification, which includes at least three subjects that link to specialisations within the national school curriculum content in either English, technologies, mathematics, science, humanities and social sciences, or health and physical education.	096028E	\$30,960
<b>Master of Teaching and Learning (Secondary)</b>	2	C T	Start Semester 1	See pg.34	Completion of an AQF level 7 bachelor degree, or equivalent qualification, which includes subjects appropriate to two curriculum areas in Australian secondary schools and that link to the national school curriculum (Australian Curriculum, Assessment and Reporting Authority (ACARA)) and/or the Queensland Curriculum and Assessment Authority (QCAA).	095676C	\$30,960

<b>GRADUATE DIPLOMAS</b>							
<b>Graduate Diploma of Global Development</b>	1	C	Start Semester 1	1	Completion of an AQF level 7 bachelor degree; or equivalent.	098477G	\$32,960
<b>Graduate Diploma of Medical Science</b> Majors: Clinical Sciences, Medical Laboratory Science	1	T	Start Semester 1	2	Completion of an AQF level 7 bachelor degree in Biomedical Sciences or cognate degree; or equivalent.	092516K	\$41,200
<b>Graduate Diploma of Psychology</b>	1	T S	Start Semester 1	1	Completion of an AQF level 7 bachelor degree, within the past 10 years, that includes an Australian Psychology Accreditation Council approved three-year sequence in Psychology with a credit (65%) average in all level 2 and 3 psychology subjects; or completion, within the past 10 years, of an Australian Psychology Accreditation Council-approved bridging degree with a minimum GPA of 5.0 (65%); or equivalent.	040166B	\$34,960
<b>Graduate Diploma of Public Health and Tropical Medicine</b>	1	T	Start Semester 1	2	Completion of an AQF level 7 bachelor degree in a related health discipline; or equivalent.	026853G	\$37,960
<b>Graduate Diploma of Science</b> Streams: Aquaculture Science and Technology, Environmental Earth Science, Environmental Management, Fisheries Science and Management, Geology, Global Change Biology, Marine Biology, Tropical Biology and Conservation	1	C T	Start Semester 1	1	Completion of an AQF level 7 bachelor degree in science; or equivalent.	076291M	\$41,200
<b>Graduate Diploma of Social Science</b>	1	C T	Start Semester 1	1	Completion of an AQF level 7 bachelor degree; or equivalent.	029019F	\$32,960
<b>Graduate Diploma of Tropical Medicine and Hygiene</b>	1	T	Start Semester 1	2	Completion of an AQF level 7 bachelor degree in a relevant health discipline; or equivalent.	027615B	\$37,960

<b>GRADUATE CERTIFICATES</b> <i>Please note: Graduate Certificates are completed in one semester, when studied full time.</i>							
<b>Graduate Certificate of Global Development</b>	0.5	C	Start Semester 1	1	Completion of an AQF level 7 bachelor degree; or equivalent.	098476J	\$16,480
<b>Graduate Certificate of Information Technology</b>	0.5	C	Start Semester 1	1	Completion of an AQF level 7 bachelor degree; or equivalent.	040174B	\$17,480

# Postgraduate research courses and fees

The fees listed are in Australian dollars and are based on the annual tuition fee for students commencing in 2023. Tuition fees may increase each year. See JCU's Tuition Fee Policy for International Students for the most up to date information on fee increases.

Please note that some subjects are not available on all campuses and that some courses or subjects are not available every semester or trimester intake.

Please visit [jcu.edu.au](http://jcu.edu.au) for the most up-to-date information on courses, intakes, subject availability and fees.

Course	Duration (years)	Campus/ Mode	Intakes	English Band Level	Minimum prerequisites and additional documentation	CRICOS Course Code	2022 Tuition fee (per year in AS)
<b>PROFESSIONAL DOCTORATES</b>							
Doctor of Education	4			2	Completion of an AQF level 8 bachelor degree with research component (or equivalent), a Preliminary Project Proposal, and Statement of Research Training, Experience, Skills and Attributes forms (refer to <a href="http://jcu.edu.au/grs">jcu.edu.au/grs</a> ).	081375J	\$32,960
<b>RESEARCH DOCTORATES</b>							
Doctor of Philosophy (Agriculture, Environmental and Related Studies)	4			2	Completion of an AQF level 8 bachelor degree with research component (or equivalent), a Preliminary Project Proposal, and Statement of Research Training, Experience, Skills and Attributes forms (refer to <a href="http://jcu.edu.au/grs">jcu.edu.au/grs</a> ).	081386F	\$41,200
Doctor of Philosophy (Architecture and Building)	4			2	Completion of an AQF level 8 bachelor degree with research component (or equivalent), a Preliminary Project Proposal, and Statement of Research Training, Experience, Skills and Attributes forms (refer to <a href="http://jcu.edu.au/grs">jcu.edu.au/grs</a> ).	081387E	\$37,960
Doctor of Philosophy (Creative Arts)	4			2	Completion of an AQF level 8 bachelor degree with research component (or equivalent), a Preliminary Project Proposal, and Statement of Research Training, Experience, Skills and Attributes forms (refer to <a href="http://jcu.edu.au/grs">jcu.edu.au/grs</a> ).	081381M	\$32,960
Doctor of Philosophy (Education)	4			2	Completion of an AQF level 8 bachelor degree with research component (or equivalent), a Preliminary Project Proposal, and Statement of Research Training, Experience, Skills and Attributes forms (refer to <a href="http://jcu.edu.au/grs">jcu.edu.au/grs</a> ).	081377G	\$32,960
Doctor of Philosophy (Engineering and Related Technologies)	4			2	Completion of an AQF level 8 bachelor degree with research component (or equivalent), a Preliminary Project Proposal, and Statement of Research Training, Experience, Skills and Attributes forms (refer to <a href="http://jcu.edu.au/grs">jcu.edu.au/grs</a> ).	081388D	\$41,200
Doctor of Philosophy (Health)	4			2	Completion of an AQF level 8 bachelor degree with research component (or equivalent), a Preliminary Project Proposal, and Statement of Research Training, Experience, Skills and Attributes forms (refer to <a href="http://jcu.edu.au/grs">jcu.edu.au/grs</a> ).	081922J	\$37,960
Doctor of Philosophy (Indigenous)	4			2	Completion of an AQF level 8 bachelor degree with research component (or equivalent), a Preliminary Project Proposal, and Statement of Research Training, Experience, Skills and Attributes forms (refer to <a href="http://jcu.edu.au/grs">jcu.edu.au/grs</a> ).	106733D	\$32,960
Doctor of Philosophy (Information Technology)	4			2	Completion of an AQF level 8 bachelor degree with research component (or equivalent), a Preliminary Project Proposal, and Statement of Research Training, Experience, Skills and Attributes forms (refer to <a href="http://jcu.edu.au/grs">jcu.edu.au/grs</a> ).	081384G	\$34,960
Doctor of Philosophy (Management and Commerce)	4			2	Completion of an AQF level 8 bachelor degree with research component (or equivalent), a Preliminary Project Proposal, and Statement of Research Training, Experience, Skills and Attributes forms (refer to <a href="http://jcu.edu.au/grs">jcu.edu.au/grs</a> ).	081385G	\$32,960
Doctor of Philosophy (Medical, Molecular and Veterinary Sciences)	4			2	Completion of an AQF level 8 bachelor degree with research component (or equivalent), a Preliminary Project Proposal, and Statement of Research Training, Experience, Skills and Attributes forms (refer to <a href="http://jcu.edu.au/grs">jcu.edu.au/grs</a> ).	106732E	\$41,200
Doctor of Philosophy (Natural and Physical Sciences)	4			2	Completion of an AQF level 8 bachelor degree with research component (or equivalent), a Preliminary Project Proposal, and Statement of Research Training, Experience, Skills and Attributes forms (refer to <a href="http://jcu.edu.au/grs">jcu.edu.au/grs</a> ).	081389C	\$41,200
Doctor of Philosophy (Society and Culture)	4			2	Completion of an AQF level 8 Bachelor degree with research component (or equivalent), a Preliminary Project Proposal, and Statement of Research Training, Experience, Skills and Attributes form (refer to <a href="http://jcu.edu.au/grs">jcu.edu.au/grs</a> ).	081379E	\$32,960
<b>MASTERS BY RESEARCH</b>							
Master of Laws	2			2	Completion of an AQF level 7 bachelor degree with either a Grade Point Average (GPA) of at least 5.5 in the final full time year of study, or with demonstrated research experience.	013245E	\$32,960
Master of Philosophy (Agriculture, Environmental and Related Studies)	2			2	Completion of an AQF level 7 bachelor degree with research component (or equivalent), a Preliminary Project Proposal, and Statement of Research Training, Experience, Skills and Attributes forms (refer to <a href="http://jcu.edu.au/grs">jcu.edu.au/grs</a> ).	081368G	\$41,200

Course	Duration (years)	Campus/ Mode	Intakes	English Band Level	Minimum prerequisites and additional documentation	CRICOS Course Code	2022 Tuition fee (per year in AS)
Master of Philosophy (Architecture and Building)	2			2	Completion of an AQF level 7 bachelor degree with research component (or equivalent), a Preliminary Project Proposal, and Statement of Research Training, Experience, Skills and Attributes forms (refer to <a href="http://jcu.edu.au/grs">jcu.edu.au/grs</a> ).	081369G	\$37,960
Master of Philosophy (Creative Arts)	2			2	Completion of an AQF level 7 bachelor degree with research component (or equivalent), a Preliminary Project Proposal, and Statement of Research Training, Experience, Skills and Attributes forms (refer to <a href="http://jcu.edu.au/grs">jcu.edu.au/grs</a> ).	075190B	\$32,960
Master of Philosophy (Education)	2			2	Completion of an AQF level 7 bachelor degree with research component (or equivalent), a Preliminary Project Proposal, and Statement of Research Training, Experience, Skills and Attributes forms (refer to <a href="http://jcu.edu.au/grs">jcu.edu.au/grs</a> ).	081339B	\$32,960
Master of Philosophy (Engineering and Related Technologies)	2			2	Completion of an AQF level 7 bachelor degree with research component (or equivalent), a Preliminary Project Proposal, and Statement of Research Training, Experience, Skills and Attributes forms (refer to <a href="http://jcu.edu.au/grs">jcu.edu.au/grs</a> ).	081370C	\$41,200
Master of Philosophy (Health)	2			2	Completion of an AQF level 7 bachelor degree with research component (or equivalent), a Preliminary Project Proposal, and Statement of Research Training, Experience, Skills and Attributes forms (refer to <a href="http://jcu.edu.au/grs">jcu.edu.au/grs</a> ).	081931G	\$37,960
Master of Philosophy (Indigenous)	2			2	Completion of an AQF level 7 bachelor degree with research component (or equivalent), a Preliminary Project Proposal, and Statement of Research Training, Experience, Skills and Attributes forms (refer to <a href="http://jcu.edu.au/grs">jcu.edu.au/grs</a> ).	0100968	\$32,960
Master of Philosophy (Information Technology)	2			2	Completion of an AQF level 7 bachelor degree with research component (or equivalent), a Preliminary Project Proposal, and Statement of Research Training, Experience, Skills and Attributes forms (refer to <a href="http://jcu.edu.au/grs">jcu.edu.au/grs</a> ).	081358K	\$34,960
Master of Philosophy (Management and Commerce)	2			2	Completion of an AQF level 7 bachelor degree with research component (or equivalent), a Preliminary Project Proposal, and Statement of Research Training, Experience, Skills and Attributes forms (refer to <a href="http://jcu.edu.au/grs">jcu.edu.au/grs</a> ).	081362C	\$32,960
Master of Philosophy (Medical, Molecular and Veterinary Sciences)	2			2	Completion of an AQF level 7 bachelor degree with research component (or equivalent), a Preliminary Project Proposal, and Statement of Research Training, Experience, Skills and Attributes forms (refer to <a href="http://jcu.edu.au/grs">jcu.edu.au/grs</a> ).	106731F	\$41,200
Master of Philosophy (Natural and Physical Sciences)	2			2	Completion of an AQF level 7 bachelor degree with research component (or equivalent), a Preliminary Project Proposal, and Statement of Research Training, Experience, Skills and Attributes forms (refer to <a href="http://jcu.edu.au/grs">jcu.edu.au/grs</a> ).	081373M	\$41,200
Master of Philosophy (Society and Culture)	2			2	Completion of an AQF level 7 bachelor degree with research component (or equivalent), a Preliminary Project Proposal, and Statement of Research Training, Experience, Skills and Attributes forms (refer to <a href="http://jcu.edu.au/grs">jcu.edu.au/grs</a> ).	081345D	\$32,960
<b>RESEARCH METHODS</b>							
Graduate Diploma of Research Methods [Tropical Health and Medicine]	1			2	Completion of at least an AQF level 7 bachelor degree in a relevant health, health science, medicine, medical science, or veterinary science discipline; with a minimum grade point average of 5.0 (credit average) in the final year; or equivalent.	086005F	\$32,960
Graduate Diploma of Research Methods [Tropical Environments and Societies]	1			2	Completion of at least an AQF level 7 bachelor degree in a relevant discipline, with a minimum grade point average of 5.0 (credit average) in the final year; or equivalent.	086004G	\$32,960
Graduate Certificate of Research Methods [Tropical Health and Medicine]	0.5			2	Completion of a 4-year AQF level 7 bachelor degree or an AQF level 8 qualification in a relevant health, health science, medicine, medical science, or veterinary science discipline, with a minimum grade point average of 5.0 (credit average) in the final year, and a grade of credit (65%) or better in a minimum of one research methods or analysis subject; or equivalent.	086003G	\$16,480 (1 semester only)
Graduate Certificate of Research Methods [Tropical Environments and Societies]	0.5			2	Completion of an AQF level 8 qualification in a relevant discipline with a minimum grade point average of 5.0 (credit average) in the final year plus a grade of credit (65%) or better in a minimum of one advanced research methods or analysis subject; or equivalent.	086002J	\$16,480 (1 semester only)

# English entry requirements

## English language tests minimum scores

Official English test results are usually valid for two years. English band requirements for each course are listed in the course charts within this guide. The results must be valid at the time of study commencement.

	Band P	Band 1	Band 2	Band 3a	Band 3b	Band 3c
IELTS	5.5 (no component lower than 5.0)	6 (no component lower than 6.0)	6.5 (no component lower than 6.0)	7 (no component lower than 6.5)	7 (with 7.0 in three components and 6.5 in one component)	7 (no component lower than 7.0)
TOEFL (internet-based)	56 (no component less than 16)	74 (no component less than 18)	86 (no component less than 21)	94 (no component less than 23)	94 (23 in Speaking, 24 in Listening and Reading, and 27 in Writing)	94 (23 in Speaking, 24 in Listening and Reading, and 27 in Writing)
Pearson (PTE Academic)	46 (no component less than 42)	52 (no component less than 52)	58 (no component less than 54)	65 (no component less than 58)	65 (with 65 in three components and 58 in one component)	65 (no component less than 65)
OET (Occupational English Test)*	No component less than B					

Other English language tests may be accepted as proof of English language proficiency. Some qualifications may satisfy our English language requirements.

\* OET is only accepted for the following undergraduate courses: Physiotherapy, Pharmacy, Psychological Science, Occupational Therapy, Nursing Science, Medicine, and Dental Surgery. Approved by Academic Board 29 April 2019.

## Course specific English entry requirements

**Bachelor of Speech Pathology:** Academic IELTS – 7.0 (with a minimum writing score of 6.0; minimum speaking score of 8.0; minimum reading and listening score of 7.0).

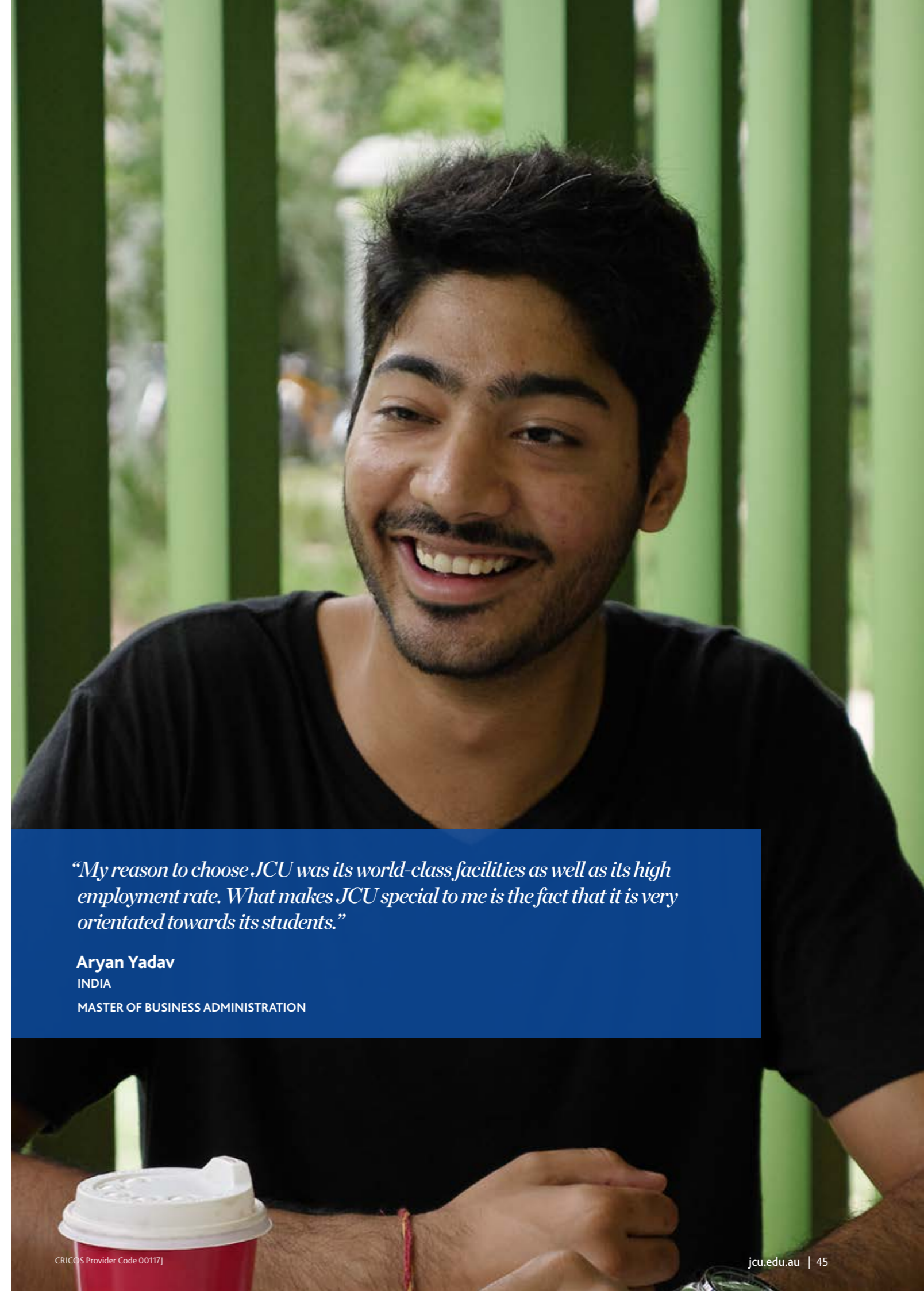
**Bachelor of Education (ECE) (Primary) (Secondary):** Academic IELTS- at least 6.5 with subscore no less than 7.0 in Speaking and Listening and no less than 6.0 in Reading and Writing or TOEFL iBT overall score of 86 with no less than 24 in Speaking and Listening, no less than 21 in Reading and Writing or Pearson (PTE Academic) overall score of 58 with no less than 65 in Speaking and Listening, no less than 54 in Reading and Writing.

**Master of Teaching and Learning (Primary) and Master of Teaching and Learning (Secondary):** Academic IELTS- at least 7.5 with subscore no less than 8.0 in Speaking and Listening and no less than 7.0 in Reading and Writing or TOEFL iBT overall score of 108 with no less than 28 in Speaking and Listening, no less than 24 in Reading and Writing or Pearson (PTE Academic) overall score of 73 with no less than 79 in Speaking and Listening, no less than 65 in Reading and Writing.

**Higher Degrees by Research (HDR):** Competitive JCU scholarships require students to meet Band 3a requirements.

## English language pathways

If you do not meet the English language requirements for your chosen JCU degree, an English language pathway may be available to you. Please visit our website for more information.



*“My reason to choose JCU was its world-class facilities as well as its high employment rate. What makes JCU special to me is the fact that it is very orientated towards its students.”*

**Aryan Yadav**  
INDIA  
MASTER OF BUSINESS ADMINISTRATION



# How to apply - Undergraduate and Postgraduate Coursework

## 1 Submit your application

You can apply online, through an authorised representative, or via a print application form.

### APPLYING ONLINE

You can submit your application online via our application portal. [www.jcu.edu.au/international](http://www.jcu.edu.au/international)

### APPLYING THROUGH AN AUTHORISED JCU REPRESENTATIVE/AGENT

You may also engage the services of one of JCU's authorised representatives/agents. A list is available at: [jcu.edu.au/international/apply/jcurepresentatives](http://jcu.edu.au/international/apply/jcurepresentatives)

## 2 Assessment

We will assess your application based upon academic and English entry requirements for your preferred course. You will be advised of any additional documentation required.

## 3 Receive and accept your offer

If your application is successful, you will receive your offer by email. This will include information on how to accept your offer, and next steps.

## Application deadlines

We recommend you apply for undergraduate and postgraduate courses as early as possible.

Standard application deadline is six weeks prior to course commencement.

Many courses have specific application due dates, so please check the website for full details.

[www.jcu.edu.au/international](http://www.jcu.edu.au/international)

## Credit for advanced standing (previous studies)

If you have completed subjects at another institution, or as part of a different degree at JCU, you may be able to transfer credit to your new course. Visit: [jcu.edu.au/students/enrolment/study-credit](http://jcu.edu.au/students/enrolment/study-credit)

# How to apply - Higher Degrees by Research

You can submit an application for a Higher Degree by Research at any time.

## 1 Complete an Expression of Interest (EOI) form

Complete an Expression of Interest (EOI) form for a Higher Degree by Research and check your eligibility for the degree you are applying for.

## 2 Scholarships

If you are applying for a scholarship, please check the application deadlines at: [jcu.edu.au/scholarships](http://jcu.edu.au/scholarships)

## 3 Find a potential Research Supervisor/Advisor

Visit the JCU Research Portfolio to find a potential supervisor, learn about our collaborations, and explore current research topics: [research.jcu.edu.au/portfolio](http://research.jcu.edu.au/portfolio)

## 4 Submit EOI to your potential supervisor

Submit your completed EOI form for a Higher Degree by Research to your potential research supervisor(s).

If your potential supervisor(s) indicates that they are interested in supervising your research degree, you then commence the **Candidature application process online**.

## 5 Submit your Candidature Application online

- Select 'Apply International' and register as a first time user on JCU's application portal using your full legal name as it appears on your passport
- Prepare electronic copies of your documentation as requested on the website – for example, academic transcripts, academic English proficiency results, and your advanced standing (credit) application
- Please note: Your academic transcripts must be accompanied by the grading scale used at the institution where you undertook your studies. If your documents are not in English, you must include an official translation
- If your native language is not English you need to demonstrate your English language proficiency, please see page 14. Applicants who have successfully completed two years of full-time study in which the language of instruction was English may satisfy the English requirement
- Complete all the questions and upload all your documents. You can save and continue the application later if you need to
- Submit your application.

## 6 Assessment

JCU will assess your application based on the documents provided and the course selected. You will be advised of any additional documentation required.

## 7 Receive and accept your offer

If your application is successful then JCU will send your offer by email.

This will include information on how to accept your offer, and next steps.



*“I was looking for opportunities to study and conduct research in a thriving research environment. JCU is situated close to the Great Barrier Reef and tropical rain forest World Heritage Sites and provides a great opportunity for my research fields, Tropical Biology and Conservation. My aim is to acquire research skills, build up international networks, and return to Thailand to join a research team to address local environmental issues.”*

**Nut Munpholsri**  
THAILAND  
MASTER OF SCIENCE

## Contact us

### Cairns

Student Services  
James Cook University  
Cairns QLD 4870  
Australia  
☎ + 61 7 4232 1000  
✉ [jcuiinternational@jcu.edu.au](mailto:jcuiinternational@jcu.edu.au)  
🌐 [jcu.edu.au/international](http://jcu.edu.au/international)

### Singapore

Admissions Office  
James Cook University Singapore  
149 Sims Drive Singapore  
387380  
☎ + 65 6709 3888  
✉ [admissions-singapore@jcu.edu.au](mailto:admissions-singapore@jcu.edu.au)  
🌐 [jcu.edu.sg](http://jcu.edu.sg)

### Townsville

Student Services  
James Cook University  
Townsville QLD 4811  
Australia  
☎ + 61 7 4781 5255  
✉ [jcuiinternational@jcu.edu.au](mailto:jcuiinternational@jcu.edu.au)  
🌐 [jcu.edu.au/international](http://jcu.edu.au/international)

### Brisbane

Admissions Office  
James Cook University Brisbane  
349 Queen Street Brisbane  
QLD 4000 Australia  
☎ + 61 7 3001 7800  
✉ [admissions@jcub.edu.au](mailto:admissions@jcub.edu.au)  
🌐 [jcub.edu.au](http://jcub.edu.au)

Stay Social #jculife



James Cook University 2023 International Study Guide is published by Marketing, James Cook University, 2022.

#### Photos

Tourism Queensland, Insight Creative, Rob Parsons, J-Create Photography, Paul Dymond, Brad Newton Photography and Andrew Rankin Photography

#### Disclaimer

The inclusion in this publication of details of a program or course creates no obligation on the part of JCU to teach it as or when described. JCU may discontinue or vary programs and courses at any time and without further notice. Information in this guide is current as at June 2022. Prior to planning any study at JCU, future students should visit [jcu.edu.au/international](http://jcu.edu.au/international) for up to date course information.

#### ESOS compliance

The provision of education services to international students by Australian education institutions is governed by the *Education Services for Overseas Students Act 2000 (ESOS)* and the *National Code of Practice for Registration Authorities and Providers of Education and Training to Overseas Students 2017*.

The ESOS Act and the Standards are designed to protect the interest of students coming to Australia on student visas. The legislation aims to protect and enhance Australia's reputation for quality education and to provide tuition protection and support the integrity of the student visa program.  
CRICOS Provider Number 00117J

#### Privacy

JCU complies with Australian and Queensland privacy laws and guidelines [jcu.edu.au/right-to-information-and-privacy](http://jcu.edu.au/right-to-information-and-privacy).

## Contact us

Phone: +61 7 4781 4060

during Australian business hours  
(9am-5pm, Monday to Friday)

Email: [jcuinternational@jcu.edu.au](mailto:jcuinternational@jcu.edu.au)



[jcu.edu.au](http://jcu.edu.au)



JAMES COOK  
UNIVERSITY  
AUSTRALIA