

2020

# Undergraduate Study Guide



JAMES COOK  
UNIVERSITY  
AUSTRALIA

Celebrating  
**50**  
YEARS  
1970 - 2020



# Why JCU?

## World-class facilities

JCU is committed to research that makes a difference to life in the tropics.

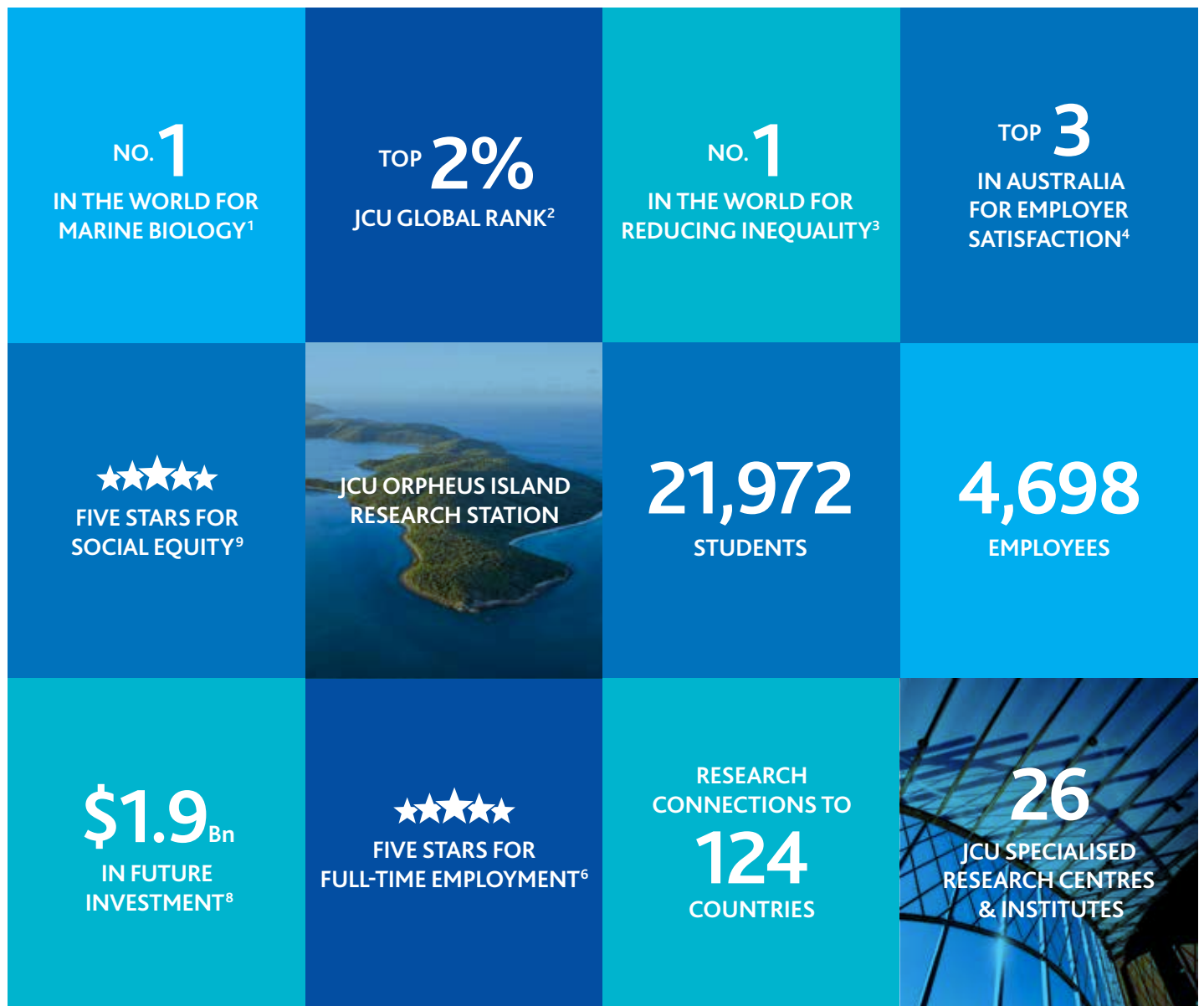
JCU researchers explore ways to improve the health of regional, remote and very remote communities, enhance the knowledge and management of critical ecosystems, and discover ways to build compassionate cities and communities.

JCU campuses and research hubs are on the doorstep of some of the world's most spectacular environments.

This includes: the Great Barrier Reef Marine Park, the rainforests of the Wet Tropics, the savannahs of Cape York Peninsula, and the deserts of the arid outback. These living laboratories provide staff and students with unique opportunities for teaching, learning and research.

Many local, national and international research organisations and industry groups collaborate with JCU.

These connections help ensure our courses are research-rich and reflect the latest innovations. Many of our staff and students are co-located with researchers from partner institutions.



<sup>1</sup> CWUR 2017 Rankings: Ranked number 1 in the world for marine and freshwater biology. Ranked number 2 in the world for biodiversity conservation. <sup>2</sup> Academic Ranking of World Universities (ARWU). <sup>3</sup> THE University Impact Ratings <sup>4</sup> QILT Employer Satisfaction Survey National Report. <sup>5</sup> Times Higher Education (THE) World University Rankings 50 under 50 2018.

ON-CAMPUS  
ACCOMMODATION  
FOR OVER  
**1,600**  
STUDENTS



STUDENTS FROM  
**108**  
COUNTRIES

'WORLD CLASS  
OR BETTER'  
IN **38** AREAS  
OF RESEARCH<sup>7</sup>

TOP  
**30**  
OF MODERN  
UNIVERSITIES<sup>5</sup>

AUSTRALIA'S FIRST  
INTERNET OF THINGS  
RESEARCH LAB

**117**  
INDUSTRY RESEARCH  
CONTRACTS



WORLD-CLASS  
FACILITIES



**15**  
DISTINGUISHED  
PROFESSORSHIPS

★★★★★  
FIVE STARS FOR  
LEARNER ENGAGEMENT<sup>6</sup>

**91**  
PUBLIC SECTOR RESEARCH  
CONTRACTS

TOTAL RESEARCH INCOME:  
**\$47.4**  
MILLION

**\$1.75**<sup>Bn</sup>  
JCU'S CONTRIBUTION TO  
HUMAN CAPITAL<sup>8</sup>



**\$1.3**<sup>Bn</sup>  
ASSETS<sup>8</sup>

<sup>5</sup> 2019 Good Universities Guide. <sup>7</sup> Excellence in Research for Australia (ERA) 2018. <sup>8</sup> 2017 JCU Economic Impact and Human Capital Report. CRICOS Provider Code 00117J

# JCU: Ready today for tomorrow



Cover image: JCU Science Place features sophisticated teaching spaces, collaborative lecture theatres and cutting-edge research labs.

# Contents

VC's welcome ..... 4

**OUR LOCATIONS**

JCU Cairns ..... 6

JCU Townsville ..... 8

JCU Singapore ..... 10

JCU Research and Learning Sites ..... 11

**STUDENT LIFE**

Your dream starts with JCU ..... 12

Campus Life ..... 14

Accommodation ..... 16

**INDIGENOUS EDUCATION AND RESEARCH CENTRE**

Information for Australian Aboriginal and Torres Strait Islander students ..... 18

**APPLYING TO JCU**

Investing in your future ..... 20

Apply to study at JCU ..... 22

Undergraduate degrees and diplomas ..... 24

**EXCHANGE OPPORTUNITIES**

JCU Global Mobility ..... 25

**STUDY AREAS**

Arts and Social Sciences ..... 26

Biomedical Sciences ..... 30

Business ..... 32

Dentistry ..... 34

Education ..... 36

Engineering ..... 38

Environmental Management ..... 40

Geoscience ..... 41

Information Technology ..... 42

Law ..... 44

Marine Science ..... 45

Medicine ..... 46

Nursing and Midwifery ..... 48

Occupational Therapy ..... 50

Pharmacy ..... 52

Physiotherapy ..... 54

Planning ..... 56

Psychology ..... 57

Science ..... 58

Social Work ..... 61

Speech Pathology ..... 62

Sport and Exercise Science ..... 64

Veterinary Science ..... 65

**DEGREE AND DIPLOMA OVERVIEW**

2020 Undergraduate degrees and diplomas table ..... 66

**FURTHER INFORMATION FOR SCHOOL LEAVERS**

Prerequisite subject equivalents ..... 70

International Baccalaureate Diploma ..... 70

**WORLD-CLASS FACILITIES**

Research Excellence ..... 72

JCU Cairns Institute ..... 74

JCU Australian Institute of Tropical Health and Medicine ..... 75

JCU Daintree Rainforest Observatory ..... 76

JCU Orpheus Island Research Station ..... 78

JCU Marine and Aquaculture Research Facility ..... 79

ARC Centre of Excellence for Coral Reef Studies ..... 80

AIMS@JCU ..... 81

JCU eResearch Centre ..... 82

JCU Advanced Analytical Centre ..... 82

JCU Fletcherview Research Station ..... 83



# Welcome to James Cook University

*As you explore this study guide, we understand there are many reasons why you may be thinking about further study. Perhaps you would like to work anywhere in the world? Save lives? Preserve our oceans? What if your future career will help eradicate inequality? Fight injustice? Or find a way to help build compassionate cities in an area known for natural disaster?*



Or perhaps you are uncertain about what the future looks like? Looking to keep your options open with a quality education that ensures you are ready today for tomorrow? Are you going to be the founder of the next Apple, Virgin, Amazon or Facebook? Or someone able to use AI and machine learning at the frontier of innovation in construction, health, engineering, or science?

Wherever you may be on your journey of discovery we are committed to you having a student experience that is life changing. An experience that may see you one moment being mentored by a world-renowned expert, working in world-class facilities and laboratories, and then heading out to visit our classrooms on the reef, in the rainforest, or in the spectacular Australian outback. Opportunities for work experience and student support are exceptional, which is why JCU continues to receive the highest accolade of five-stars for student engagement.<sup>1</sup>

Courses in tropical health and medicine encourage the development of skills in serving regional, remote and very remote communities across Australia and the world. As a world leader in tropical environments and societies, when you study at JCU you know you are working towards a world-class education from the number one university in the world for eradicating inequality<sup>2</sup>;

and number one in the world for study areas like marine science and freshwater biology.<sup>3</sup> Employers know a JCU graduate is a standout able to apply technical competency, while having an ability to think differently about the challenges they are likely to face in a complex world.<sup>4</sup>

These are hard-earned and welcome accolades and testimony to the commitment of academic, professional and technical staff to ensuring a well-rounded graduate committed to making a difference.

Thank you for taking a moment to explore one of the most fascinating places in the world with us. We look forward to building a future with you that helps make the world a better place for all.

A handwritten signature in black ink that reads "Sandra Harding". The signature is fluid and cursive.

**Professor Sandra Harding AO**  
Vice Chancellor and President

1. The Good Universities Guide, 2019 2. Times Higher Education University Impact Ratings, 2019, by SDG 3. Centre for World University Rankings, 2017 4. Quality Indicators of Learning and Teaching, 2018

# Important dates

## Careers markets 2019

VCE & Careers Expo	2 - 5 May
Gladstone Careers Expo	8 May
Capricorn Careers Expo	9 May
Cairns Careers Expo	28 May
Western Sydney Expo	27 - 30 June
TSXPO Brisbane	20 - 21 July
Townsville Careers Expo	5 August
Proserpine Careers Expo	6 August
Mackay Careers Expo	7 August
Moranbah Careers Expo	8 August
Darwin Careers Expo	23 - 24 August

## University Experience 2019

Year 12 (Cairns and Townsville)	15 - 18 July
Year 10 (Cairns and Townsville)	5 - 7 June
Year 8 (Cairns and Townsville)	26 - 29 November

## Open days 2019

JCU Townsville, Douglas	Sunday 11 August
JCU Cairns, Smithfield	Sunday 25 August

## Study dates 2020 (Cairns and Townsville)

### Teaching period one 2020 (Semester one)

Orientation (O Week)	17 - 21 February
Classes begin	24 February
Mid semester break	20 - 24 April
Classes end	31 May
Exam period	6 - 19 June

### Teaching period two 2020 (Semester two)

Orientation (O Week)	20 - 24 July
Classes begin	27 July
Mid semester break	28 September - 2 October
Classes end	1 November
Exam period	7 - 20 November

For more upcoming events please visit [jcu.edu.au/events](http://jcu.edu.au/events)

To register for a campus tour please visit [experience.jcu.edu.au/campus-tours](http://experience.jcu.edu.au/campus-tours)

**RESPECT.  
NOW.  
ALWAYS.**

James Cook University values and celebrates the diversity of our community and is committed to ensuring our learning and working environment is safe and welcoming.

JCU is proud to be part of the Respect. Now. Always. campaign – a national initiative led by Universities Australia to highlight our determination to ensure our students and staff are safe from discrimination and sexual harassment. Further information about the campaign and free services available for students can be found at [jcu.edu.au/sew](http://jcu.edu.au/sew)



## Our commitment to Australian Aboriginal and Torres Strait Islander peoples

James Cook University is committed to building strong and mutually beneficial partnerships that work towards closing the employment, health and education gap for Australian Aboriginal and Torres Strait Islander peoples. Our students come from many backgrounds, promoting rich cultural and experiential diversity on campus.

*We acknowledge the Australian Aboriginal and Torres Strait Islander peoples as the Traditional Owners of the lands and waters where we operate our business. We honour the unique cultural and spiritual relationship to the land, waters and seas of First Australian peoples and their continuing and rich contribution to JCU and Australian society. We also pay respect to ancestors and Elders past, present and future.*



Kassandra Savage (JCU Alumni),  
*'Coming Together and Respecting Difference'*,  
acrylic on canvas, 2014, 90cm x 90cm.

This publication is intended as a general guide for domestic students only. Prospective domestic students and all international applicants should contact the University to confirm admission requirements and the availability of courses.

Information is correct at the time of printing. James Cook University reserves the right to alter any course or admission requirement without prior notice.

CRICOS Provider code 00117J.

# JCU Cairns

*Study in some of the most interesting places on Earth. Explore unrivalled research locations, access World Heritage natural environments and learn in state-of-the-art facilities. Build valuable professional networks while developing the skills and knowledge to make a difference.*



*The modern campus is surrounded by rainforest-covered mountains and close to the northern beaches.*



## JCU Cairns

JCU Cairns houses state-of-the-art teaching and research facilities, health science laboratories, an Internet of Things research laboratory, library, student refectory, and outdoor sporting facilities. Over 4,000 students study at JCU Cairns, including approximately 380 international students. JCU Cairns is 15 kilometres (9 miles) north of the city centre in the suburb of Smithfield. The campus is surrounded on three sides by rainforest-covered mountains and is close to the northern beaches. Students enjoy a tranquil learning environment due to the abundance of lush greenery and spacious areas.

Located in the city centre, JCU Cairns City offers a range of flexible study, teaching and meeting areas, and North Queensland's first 'moot court' with e-court facilities providing practical training for law students. Access to video conferencing and catering facilities in the boardroom gives staff and students opportunities to meet and network with businesses and the local community.

Studying in Cairns provides access to two World Heritage natural environments – the Great Barrier Reef Marine Park and the Wet Tropics ancient rainforests. Students can develop specialised skills during field trips and expeditions to distinctive research locations.

Cairns is one of the most popular tourist destinations in Australia, with over two million visitors annually. The variety of natural wonders coupled with a tropical climate make Cairns an ideal place for active outdoor living. The city is a great base for exploring the nearby resort regions of Port Douglas and Mission Beach, the picturesque Atherton Tablelands and outback Queensland.



Cairns city, overlooking Trinity Bay, and the coastline north to Port Douglas and Cape Tribulation.

## Cairns fast facts

Cairns is a gateway to the Great Barrier Reef, Daintree and Wet Tropics rainforest, Atherton Tablelands and the outback savannah region, so you'll never run out of places to enjoy and explore.



### Climate

Wet season (November–May)  
24°–32°C/75°–90°F  
Hot, rainy and humid atmosphere  
Dry season (June–October)  
17°–26°C/63°–79°F  
Mild and dry atmosphere

### Food

Easy access to an abundance of fresh local food and cuisines from around the world.

### Population

160,000 (city), >4,000 (campus)

### Transport

Bus to and from campus, car, bicycle (extensive network of bike tracks throughout Cairns), international airport.

### Places of worship

JCU's Multifaith Chaplaincy Centre is available as a free facility for you to practice your faith.

### Medical

On-campus dental clinic, as well as a hospital, medical clinics, psychology clinics and more off campus.

### Campus

Smithfield, near the popular northern beaches and approximately a 20-minute drive from the city centre. Study facilities can also be accessed at the Cairns City campus.

### On-campus sport

Gymnasium, basketball courts, sporting fields and a world-class mountain bike track.

# JCU Townsville

*Study in a unique environment where world-class facilities, natural wonders and vibrant student life come together. JCU Townsville is a teaching, research and community hub with a range of state-of-the-art equipment and resources for you to make the most of your time at university.*



*JCU Science Place offers sophisticated learning spaces.*

## JCU Townsville

Students access exceptional teaching and research facilities at JCU Townsville. Develop professional skills, engage with peers and learn from leading lecturers at JCU Science Place. The world-class facility features sophisticated teaching areas, collaborative lecture theatres, technology enabled active learning spaces and cutting-edge research labs. Students can also access research facilities and learning support services at the Eddie Koiki Mabo Library. The Library hosts exhibitions, providing opportunities to access and appreciate different artworks and artefacts. Students enjoy a rich social life and can join a range of clubs and societies. From sports through to culture, there is a club to suit any interest.

JCU Townsville is 13 kilometres (8 miles) from the city centre and houses around 1,400 students in colleges and halls of residence. Over 13,000 students are part of the JCU Townsville community, including approximately 1,500 international students. JCU Townsville is located in the suburb of Douglas and is surrounded by natural bush and parkland. Townsville is small enough to escape the hustle and bustle of big city life, but large enough to boast a range of facilities. Students can make the most of the great outdoors through rainforest hikes, mountain biking and snorkelling or scuba diving on the Great Barrier Reef.



Townsville city, from Castle Hill, overlooking Cleveland Bay and east to Magnetic Island.

## Townsville fast facts

Townsville is Australia's largest tropical city and thriving coastal port. Magnetic Island and the Great Barrier Reef are on Townsville's doorstep; the savannah region and outback country towns lie to the west. Townsville is famous for an average of 320 days of sunshine per year, so there are endless opportunities to enjoy the outdoors.



### Climate

Summer (December–February)  
24°–32°C/75°–90°F  
Hot and humid atmosphere  
Winter (June–August)  
13°–26°C/56°–79°F  
Mild and dry atmosphere

### Food

Easy access to an abundance of fresh local foods and cuisines from around the world.

### Population

190,000 (city), 13,000 (campus)

### Transport

Bus to and from campus, car, bicycle, international airport (Bali and Port Moresby).

### Places of worship

JCU's Multifaith Chaplaincy Centre is available as a free facility for you to practice your faith.

### Medical

On-campus hospital, medical clinic, psychology clinic, physiotherapy clinic, dental clinic, occupational therapy clinic, speech pathology clinic, exercise physiology clinic and veterinary clinic.

### Banks

Westpac, Commonwealth Bank and RediATM facilities on campus.

### Campus

Douglas, Australia's largest university campus, approximately a 20-minute drive from the city centre. Study facilities can also be accessed at the Townsville City Campus.

### On-campus sport

Gymnasium, basketball courts, tennis courts, squash courts, netball courts, rugby and soccer fields, hockey fields, cricket pitches and swimming pool.

# JCU Singapore

*Prepare yourself for the global workforce in one of the most dynamic cities in the world.*

*A constantly evolving city, Singapore is at the forefront of global health, technology and economic advancement. Be a part of this rich multicultural community and study at a university in the top 2% in the world\*. JCU Singapore boasts cutting-edge facilities, collaborative learning spaces, and internationally-renowned lecturers to help you succeed every step of the way.*

[jcu.edu.sg](http://jcu.edu.sg)

## Climate

Dry season (March–August)

25°–32°C/77°–90°F

Wet season (September–February)

24°–32°C/75°–90°F

## Food

There is easy access to fresh fruit, vegetables, meat and seafood. Singapore enjoys a large range of ethnic cuisines, as well as plenty of vegetarian, vegan, and halal options.

## Population

5.8 million

## Transport

Two MRT (train) stations are a 10-minute walk from campus, and there are three bus stops within short walking distance to the campus.

## Places of worship

A prayer room is available on-campus for student use.

## Medical

The JCU Singapore Psychology Clinic, a sick bay and nurse's room are located on campus. There is a hospital 15 minutes from the campus, as well as several medical clinics around the city.

## Sporting facilities

A wide range of sporting facilities are on campus, including a gymnasium, basketball and tennis courts, and a multi-purpose sports hall.



\* The Academic Ranking of World Universities, Shanghai Jiao Tong University, 2018

# JCU Research and Learning sites



## Thursday Island

JCU's Australian Institute of Tropical Health and Medicine (AITHM) Clinical Research and Training Facility is adjacent to the Torres Strait Hospital on Thursday Island. AITHM is an important site for research, training, and community engagement.

The facility provides teaching and learning facilities for JCU students and a community space for engagement and collaboration with the Torres Strait community.

Thursday Island is a vibrant tropical region in the Torres Strait, at the northern tip of Australia. It is referred to as Waiben by the Kaurareg people, who are the traditional owners. The island is rich in native wildlife, diverse in culture, and surrounded by dazzling ocean.

## Mackay

JCU Mackay is co-located with the Mater Misericordiae Hospital in North Mackay. This unique location provides students with extensive hands-on learning and clinical experience at both the Mater and Mackay Base Hospitals, as well as with other clinical agencies.

JCU Nursing and Midwifery is a leader in regional, rural, and tropical healthcare sciences. The Bachelor of Nursing Science can be completed at JCU Mackay and includes a science residential program at JCU Townsville. Small class sizes and personalised support from teachers fosters the development of compassionate and highly skilled graduates.

Lush rainforests, hinterland, national parks, iconic Queensland beaches, and rock pools are just the start of life in Mackay. The city impresses with its architecture, public art, and thriving dining precinct.

## Mount Isa

JCU's Centre for Rural and Remote Health (CRRH) at Mount Isa provides access to health education for the remote west region of Queensland. Become involved in a close-knit community in the Australian outback with all the facilities you need to make the most of your learning experience. The CRRH has lecture rooms, access to video conferencing, research facilities, a computer laboratory, and a procedural skills laboratory. A growing health services library makes it easier than ever to gain your qualification in this important remote location.

A growing number of courses are available at Mount Isa, which offers opportunities to gain rural experience like nowhere else. The centre facilitates research and education for rural, remote, and Indigenous health issues.

Rugged mountain ranges and classic outback terrain surround Mount Isa, a mining city on the banks of the Leichardt River. Nearby Lawn Hill Gorge is a surprising oasis of lush greenery and clear spring water in the national park. The world heritage listed Riversleigh Fossil Fields are a must-see for prehistoric plants and animals.

## Brisbane

JCU Brisbane is a modern high rise building located in Brisbane's Central Business District (CBD) on Queen Street. The campus has study and leisure facilities including computer stations with high speed internet and WiFi and activity rooms. Students at JCU Brisbane study undergraduate or postgraduate degrees in accounting, business, education, hospitality and tourism, or information technology.

The campus is easily accessible via public transport, which is discounted for students. Just across the river is the State Library of Queensland, the Queensland Art Gallery and Gallery of Modern Art.

Brisbane is the capital of Queensland and among the largest cities in Australia. With lower living costs than Melbourne and Sydney and thriving dining and nightlife scenes, it's a favourite for university students. Situated on the Brisbane River, the city is full of greenery—including the City Botanic Gardens, Roma Street Parkland, and stunning South Bank.

# Your dream career starts with JCU

*Your world-class education begins here. JCU graduates are able to apply technical competencies, while thinking differently about the challenges facing the world. You'll be equipped with the expert knowledge and job-ready skills to stand out in your chosen career path. Field trips and practical placements are just some of the real-world experiences on offer at JCU.*

## ✔ Student placements and projects

Kick start your career though study incorporated with real-world practice. You'll gain valuable work experience and network with leading industry professionals in your field. Student placements and projects will help you to transition into the workplace with the practical skills and knowledge necessary to succeed.

[jcu.edu.au/placements](http://jcu.edu.au/placements)

## ✔ Professional experience is key

Field trips, clinical placements, practicums and internships – no matter what your study area, JCU provides opportunities to build your knowledge. Develop your skills in a real-life setting and learn from leading professionals. You could find yourself working in some of the most beautiful places in the world – from the Great Barrier Reef to the outback, or even overseas!

## ✔ Careers and employment

Need a part-time job while you study? JCU's Careers and Employability service is available online and on-campus, connecting students to part-time and casual employment, vacation jobs, and volunteering opportunities. You can find career advice and planning, resume tips, and links to potential employers. Stand out from your competitors with Big Interview, an online resource that combines training and practice to improve your interview technique and confidence.

[jcu.edu.au/careers-and-employability](http://jcu.edu.au/careers-and-employability)

## ✔ Go global

Enhance your employability and prepare for a global workforce by studying overseas. JCU has partner universities in more than 20 countries across Europe, Asia, the Pacific and the Americas. Challenge yourself – you'll be rewarded with rich cultural experiences, unique skills, and lifelong memories.

[jcu.edu.au/globalmobility](http://jcu.edu.au/globalmobility)

## ✔ Volunteering

Spruce up your resume with a range of JCU's extracurricular volunteering opportunities. From working to protect the environment to assisting at events and mentoring students, there is a volunteering opportunity to suit you. Not only will you make a valuable difference to the community, you'll have fun, gain work experience, and network with friends and professionals.

## ✔ Employer satisfaction

Study with the confidence that your course is preparing you for success in the workforce. JCU is in the top three universities in Australia for employer satisfaction.\* Practical placements, field trips and work-integrated learning provides opportunities to develop in-depth knowledge and professional skills that are highly valued by employers. Connect with leading experts and peers to develop networks and build a foundation for career success.

\* QILT Employer Satisfaction Survey National Report 2018

*“One of the best things about JCU’s law degree is that they start by teaching the theory side of law. A great lawyer doesn’t just know what the law is, they know why the law is what it is, how it got there and how it can adapt to the future. The lecturers do a great job at teaching you that.”*

**Mitchell Locke**

BACHELOR OF LAWS - BACHELOR OF BUSINESS, MAJORING IN ECONOMICS



# JCU Campus Life

*Experience the best of student life, including a vibrant social community in the most beautiful locations in the world. Join clubs and societies, meet like-minded people, and make lifelong friends. Pursue your interests or try something new – you never know where campus life will take you!*

[jcu.edu.au/student-life](http://jcu.edu.au/student-life)



## Orientation Week

Kick start university life with Orientation Week (O Week). Familiarise yourself with the campus, meet other students, get to know your lecturers and tutors, and attend information sessions. The JCU Orientation Program runs over six weeks, from the week before O Week until Week 4. Get pumped and ready for the year ahead!

[jcu.edu.au/getready4uni](http://jcu.edu.au/getready4uni)

## Student Association

The JCU Student Association (JCUSA) is your first stop for getting involved with student life. Become a JCUSA member to have fun, meet a variety of people, and be invited to social events throughout the year. You'll find a community to connect with by joining one of our many clubs and societies, from academic and social societies to sports, cultural and religious clubs. JCUSA is also here to care for you during your time at university, with support and free independent advice available for all students.

[jcu.edu.au](http://jcu.edu.au/jcusa)

## TropEco: Sustainability in Action

Passionate about sustainability and the environment? The award-winning TropEco program is for you! Collaborate with like-minded people to help create a culture of sustainability at JCU. Volunteer in a range of TropEco activities, from running campaigns to maintaining on-site community gardens. You can also apply for TropEco's renowned Internship program to learn valuable skills from the TropEco team and gain formally-recognised work experience.

[jcu.edu.au/tropeco](http://jcu.edu.au/tropeco)

## Learn from the best

Want to gain an edge in your first semester? Get a student mentor! The JCU Student Mentor Program helps to match experienced student mentors with new undergraduate students from the same course of study during O Week. Student mentors are passionate about sharing their knowledge and helping students succeed in their first semester. Having a mentor will increase your success rate by up to 17 per cent, so don't miss out!

[jcu.edu.au/mentor](http://jcu.edu.au/mentor)

## The Learning Centre

Need some academic assistance? The Learning Centre provides academic learning development and self-help resources both online and on campus. Whether you need study tips, numeracy and basic statistics development, or help with academic reading and writing, The Learning Centre can help. If English is your second language, develop your language skills for studying at university by attending one of our workshops or online programs.

[jcu.edu.au/learning-centre](http://jcu.edu.au/learning-centre)

## Library services

The JCU Library offers a range of resources and services to help you succeed. You'll have 24/7 access to a comprehensive range of online resources that assist with research, referencing, and basic library enquiries. On campus, check out our comfortable zoned study areas, and make use of the free WiFi, computers, printers and 3D printing. Need help? Assistance is available in person during our extensive library opening hours, or online via our chat service.

[jcu.edu.au/library](http://jcu.edu.au/library)



## Your health & wellbeing

Put your mind, body, and soul first with our free and confidential wellbeing services. Counselling and wellbeing staff are here to support you through social, emotional, welfare and personal issues. AccessAbility services are available if you have a temporary or permanent injury, illness or health condition that will impact on your study. JCU also has a multi-faith chaplaincy that offers a diverse range of services to the community.

[jcu.edu.au/sew](http://jcu.edu.au/sew)

## Careers & Employment

Need a part-time job while you study? JCU's Careers and Employability service is available online and on-campus, connecting students to part-time and casual employment, vacation jobs, and volunteering opportunities. You can also find career advice and planning, resume tips, and links to potential employers. Plus, stand out from your competitors with Big Interview, an online resource that combines training and practice to improve your interview technique and confidence.

[jcu.edu.au/careers](http://jcu.edu.au/careers)

## Looking for financial support?

Don't let finances stop you from achieving your goals. JCU has a range of financial support options to help you with the costs of studying.

[jcu.edu.au/students/fees-and-financial-support](http://jcu.edu.au/students/fees-and-financial-support)

## Do you need childcare?

A range of convenient childcare options are available at each campus. JCU Townsville has two childcare facilities on-campus. JCU Cairns and Singapore have multiple childcare centres located near the campus and in surrounding suburbs.

## Are you an elite athlete?

Combine your elite sporting ambitions with academic excellence. JCU is proud to be part of the Elite Athlete Friendly University (EAFU) program and aims to provide support to help students meet both study and sporting requirements.

[jcu.edu.au/elite-athletes](http://jcu.edu.au/elite-athletes)

# JCU Accommodation

*Study and live in some of the most interesting places in the world. Cairns and Townsville are on the doorstep of the Great Barrier Reef, magnificent rainforests, the savannah region and Outback Australia. Whether you need somewhere to stay for a block-mode subject or for the duration of your course, there are a range of options available at JCU.*

## Living on-campus

Living on-campus is a great way to make the most of your time at JCU. With five different accommodation options at JCU Townsville, housing over 1,200 students, and a brand new complex for 300 students at JCU Cairns, living on-campus is a great place to make new friends and immerse yourself into the JCU culture.

All rooms at our on-campus residences are single board, with a single bed, study desk, chair, fan, air-conditioning and Wi-Fi. Each residence is different in regards to style of living, culture and atmosphere. There are options for fully catered or self-catered housing. You can take virtual tours of each residence at [jcu.edu.au/accommodation](http://jcu.edu.au/accommodation)

Living on-campus is so much more than just a room. It is a safe, secure and fun way to transition into university life. Each of our residences provides academic support, wellbeing support and social support.

Your safety and security are a priority. Each bedroom has an individual lock that only you and our staff can access. After-hours access to any buildings on residence can only be accessed by residents living there. We have CCTV cameras throughout the buildings. JCU Security are on-campus and patrol the grounds 24/7 and are able to escort you back to your residence if you are studying late at night.

Relocating to attend university is a big thing. Our on-campus team are here to support you through your transition to university life. They are there to talk to when you need support, check on you to ensure that you are coping OK and make sure that your health and wellbeing are on track for you to achieve your academic goals. To assist with your studies, you can form study groups and our team are able to provide academic support.

One of the most important things when you are moving somewhere new is making new friends to share your experiences with. Isolation and loneliness can have a significant impact on your mental health and academic success. This is why we make sure you know someone else studying the same course you are before you take your first class. And there are lots of fun social activities happening all year through including movie nights, sporting events, international festivals, outings and musical showcases.

Applications to live on-campus open August 1 for the following year. You can apply for on-campus housing at [jcu.edu.au/accommodation](http://jcu.edu.au/accommodation)





*“Meeting and making friends with wonderful people from many diverse degrees and hanging out with them in so many different social settings is one of the best things about living on campus. The college offers so many different ways to help your studies. I found mentoring in first year very helpful, as older students from the same course would guide you throughout the year.”*

**Nancy Wang**

BACHELOR OF MEDICINE, BACHELOR OF SURGERY

## Living off-campus

Off-campus housing can come in the form of sharing a house with other students, purpose-built student accommodation or renting an entire property.

The JCU website has a database of properties located close to the campuses. The database is regularly updated.

Before committing to a property or room off campus, please be sure to:

- Check what you are getting is part of your lease. Even though images show the property with furniture they may have been put there for marketing purposes only.
- Check the dates and length of time you are committing to. You will be signing a legal document, which you may not be able to break because you have changed your mind.
- Check the location of the property to the proximity to the University campus, bus stops and amenities.

Please don't hesitate to contact the JCU Accommodation team for any support or to answer any questions you have in relation to the property or location you are considering living during your time at JCU.

## Homestay

A homestay is when you are matched with a family in the local area to live with. All homestay hosts have been screened by the JCU's homestay provider, and are required to undergo training in order to provide a high level of service and comfort to the student. More information is available

[jcu.edu.au/accommodation/homestay](http://jcu.edu.au/accommodation/homestay)

## Transport

Both JCU Townsville and JCU Cairns are located about 20 minutes from the airport. Buses don't run from the airports, however taxis are available. A bus from the centre of town to the University will take about 30 minutes. Buses run regularly. You can view the timetables at

[sunbus.com.au](http://sunbus.com.au)

## Further information

[jcu.edu.au/accommodation](http://jcu.edu.au/accommodation)

[accommodation@jcu.edu.au](mailto:accommodation@jcu.edu.au)

T 07 4781 4148

T (International) +61 7 4781 4148



# Information for Australian Aboriginal and Torres Strait Islander students

## Student support

The team at the JCU Indigenous Education and Research Centre (The Centre) is here to support you from the time you start thinking about studying at JCU right through to graduation and beyond. We offer a range of services and facilities in encouraging environments to empower you to achieve success.

We are dedicated to helping you reach your full potential. The Centre is located at JCU Cairns and JCU Townsville. We offer mentoring, professional development opportunities, study sessions and much more. We have fantastic learning facilities and computer labs, which are open all day, every day and are in secure and monitored spaces.

We understand that everyone has different learning styles, learns at different levels and at their own pace. You may be a visual learner, a hands-on student, prefer to solve problems and put theory into practice, or have another style of learning. During your study, we strive to help you become an independent learner. We can help you 'learn to learn' and develop ways to meet academic demands and expectations. We have many people in our friendly team who can help you build strategies and stay motivated. Think of us as family.

## Reaching your potential

JCU Indigenous Student Support Advisors can help find information, develop study strategies and provide mentoring. Think of them as your one-stop shop for information on admission pathways, course advice and study options. They also provide support on health and wellbeing, accessing services and can keep you focused on your passion and direction.

## Study success

JCU Indigenous Academic Support Advisors provide assistance in a friendly and encouraging environment. They can provide academic coaching, help you develop strategies to identify areas of improvement, assist you to create effective study plans, stay motivated throughout your studies and much more.

## Indigenous Tutorial Assistance

You can access free tutoring throughout your degree. Combining academic coaching with your own commitment can reduce stress and improve results. You will be matched to a tutor who is an expert in their field and you can be coached at a time and place that suits you. Depending on your goals, tutoring can be used to improve grades, refresh content or prepare for exams.

## Become part of a community

Going to university is not only about study. Our informal gatherings and barbecues are great places to meet staff and other students. Our biggest event is the JCU Indigenous Students' Awards Dinner, a formal occasion for celebrating with families, peers, community members, industry partners and government bodies. The annual Awards Dinner is a time to recognise students for their hard work and dedication, as well as awarding bursaries and certificates for their achievements.

## Contact us

[jcu.edu.au/ierc](http://jcu.edu.au/ierc)





*“I visit the Indigenous Education and Research Centre regularly. They are like my family. I head in to have a yarn most of the time and I occasionally use the other services provided. I like the space and environment of The Centre.”*

**Assan Sam**

BACHELOR OF SPORT AND EXERCISE SCIENCE

## Admission pathways

If you don't have the formal academic qualifications or meet the prerequisites for your chosen course, don't stress. You can enter one of our JCU pathway programs and start your journey at university.

### TERTIARY ACCESS COURSE (TAC)

Refer to page 21 for more information about JCU's free Tertiary Access Course (TAC).

### DIPLOMA OF HIGHER EDUCATION

Refer to page 21 for more information about the JCU Diploma of Higher Education.

## Do you want to be a teacher?

If you want to shape a positive future for young children in your community, RATEP\* provides a pathway to completing a Bachelor of Education (Primary).

RATEP\* is a community-based Australian Aboriginal and Torres Strait Islander teacher education program.

As an Australian Aboriginal and/or Torres Strait Islander student, you can gain teaching qualifications while remaining in your local community. You can study at a RATEP site, as well as have short on-campus sessions in Townsville. Using interactive multimedia course materials, you will study the same subjects with the same lecturers as JCU students in Cairns or Townsville.

For more information, email: [ratep@jcu.edu.au](mailto:ratep@jcu.edu.au)

\*RATEP is a partnership between JCU, the Department of Education and Training (DET), TAFE Queensland North (TQN), and the Torres Strait Islander Regional Education Council (TSIREC)

## Do you want to be a dentist, a doctor, a nurse or have an exciting career in the health sector?

If you don't meet the entry requirements of your chosen health degree, JCU's Indigenous Health Careers Access Program (IHCAP) may be for you.

Dedicated IHCAP Officers and Academic Advisors will work with you to build your skills and strengthen your capabilities for successful study at university.

IHCAP disciplines include:

- Bachelor of Biomedical Sciences
- Bachelor of Dental Surgery
- Bachelor of Exercise Physiology (Clinical)
- Bachelor of Medical Laboratory Science (Honours)
- Bachelor of Nursing Science
- Bachelor of Occupational Therapy (Honours)
- Bachelor of Pharmacy
- Bachelor of Physiotherapy
- Bachelor of Speech Pathology
- Bachelor of Sport & Exercise Science
- Bachelor of Veterinary Science.

This Program is the only one of its kind in northern Queensland and offers an orientation course held on our JCU Townsville campus in January. Our dedicated staff help you adjust to university study by providing practical advice, such as budgeting, planning, time-management, as well as study skills.

When you submit your application to QTAC, nominate JCU as your first preference for the health course of your choice and indicate that you are of Aboriginal and/or Torres Strait Islander descent. If you are accepted into a JCU health degree and have identified as Aboriginal and/or Torres Strait Islander, our friendly staff will contact you.

[jcu.edu.au/ihcp](http://jcu.edu.au/ihcp)

# Investing in your future

## Admissions

JCU is committed to providing pathways and opportunities for all students and creating a brighter future for life in the tropics.

As the leading higher education institution in North Queensland, JCU has a central role in education opportunities and research outcomes throughout the region. Our graduates and their work shape future decisions for tropical communities and many of our students come from rural, regional, and remote areas.

JCU seeks to admit students from all parts of Queensland, as well as other states and countries who aspire to create opportunities and enduring, sustainable benefits for our region and beyond. Academic achievement, creative endeavours, and commitment to community are important to our students. They are diverse, respect one another, and are eager to contribute as scholar-citizens.

### ADMISSIONS TRANSPARENCY

The Australian Government introduced a requirement for all higher education institutions to make data on their undergraduate admission cohorts available to the public each year starting from the 2018 admission period.

This information is intended to help potential undergraduate students understand the courses available to them, the typical student cohort each year and specific admission requirements.

For more information, visit [jcu.edu.au/admissions-transparency](http://jcu.edu.au/admissions-transparency)

Consult the JCU course specific guide for specific admissions information about your degree, essential requirements for admission, admission criteria, how to apply, advanced standing, and a student profile.

For any questions relating to the data available, contact the Admissions team at [admissions@jcu.edu.au](mailto:admissions@jcu.edu.au)

## Fees

You can pay all or part of your fees upfront or, if you are eligible, you may defer payment of your course fees through the HELP scheme. The JCU Student Centre team can help you find out what financial support options are available, including the HECS-HELP and FEE-HELP loan schemes.

The fees listed are in Australian dollars and are based on the tuition fees for students commencing in 2019. Each unit of study is classified into a student contribution band, depending on the study area of the unit (this may be different from the study area of your course). Annual tuition fees equate to 24 credit points. Tuition fees may increase each year.

Band	Study area	Per subject*	Maximum amount per year**
3	Law, Accounting, Commerce, Dentistry, Medicine, Veterinary Science	\$1,369	\$10,958
2	Mathematics, Statistics, Computing, Built Environment, Other Health, Allied Health, Science, Engineering	\$1,169	\$9,359
1	Humanities, Behavioural Science, Clinical Psychology, Foreign Languages, Social Studies, Visual and Performing Arts	\$820	\$6,566

\* (3 credit points) \*\* (24 credit points)

## STUDENT SERVICES AND AMENITIES FEE (SSA FEE)

The Student Services and Amenities Fee (SSA Fee) improves services and facilities for students. Your fee statement and tax invoice can be found via your eStudent account, as well as the due date and how to pay.

You may be eligible to defer payment of your SSA Fee with a SA-HELP loan.

## INCIDENTAL FEES

You may need to purchase items or pay for activities relating to your course. These purchases are not covered by your tuition fees. Compulsory purchases can include software, accommodation for placement, travel, and technology such as a laptop. Living expenses in Cairns or Townsville are often more affordable than living in a capital city.

## Financial support

Financial support options help with the cost of studying. You may be able to defer payments, get a loan, or receive government assistance.

### HECS-HELP LOAN

HECS-HELP is a commonwealth government loan program designed to defer payment of subject fees. You will have to repay your loan once you begin earning an income above the compulsory repayment threshold.

HECS-HELP is available to Australian citizens, permanent humanitarian visa holders and some New Zealand citizens. Students must have a commonwealth supported place (CSP) to be eligible.

### FEE-HELP LOAN

FEE-HELP is a government loan program similar to HECS-HELP. However, students do not have to have a CSP to be eligible for FEE-HELP. You must be an Australian citizen, a permanent humanitarian visa-holder, or a New Zealand citizen who meets certain criteria.

Trained overseas professionals who want to undertake bridging study at JCU and have met specific eligibility criteria can also apply for FEE-HELP. You will have to repay your loan once you begin earning an income above the compulsory repayment threshold.

### OS-HELP LOAN

An OS-HELP loan is administered by the Australian Government to allow students to study part of their course overseas. Students may receive up to two OS-HELP loans and may also receive a supplementary loan to study the language of their host country.

Students must have a CSP and meet the eligibility criteria. The loan amount will be added to your accumulated HELP debt.

### JCU STUDENT LOAN

JCU offers all students the opportunity to apply for a small loan to help with essential study-related expenses such as textbooks. You must repay this loan according to a provided schedule.



## Admission pathways

### ENABLING COURSE - TERTIARY ACCESS COURSE (TAC)

In just one semester you can get university ready with academic skills, confidence, and know-how—for free. If you didn't finish high school, haven't studied for a while, or you're not confident learning online, the Tertiary Access Course will set you up to thrive at university.

Experienced and friendly staff will teach you the ropes in small classes. Start your degree feeling cool and in control. Essential IT skills will prepare you to focus on your study, not on computer problems!

Learn about life at university without paying fees. This course can be completed in one semester full-time, or study part time for more flexibility.

What it offers	What you gain
A free, one-semester (14 weeks) full-time course (part-time available)	Knowledge about university life without having to pay fees
Small class sizes	Improved academic skills including computing and IT knowledge
Advice and support from staff before and during course	Confidence to study at university

## Scholarships and Financial Aid

### SCHOLARSHIPS AND GRANTS

Explore the range of financial support available to JCU students. Scholarships, bursaries, and grants are offered to assist financially and we have a variety of options for students starting their first degree at JCU.

JCU offers many scholarships and grants. Government departments and industry groups also offer external scholarships. JCU also administers the Commonwealth Scholarship Program for Australian Aboriginal and Torres Strait Islander students on behalf of the Australian Government. These scholarships support Indigenous students to have improved access to higher education. Find out more at [jcu.edu.au/scholarships](http://jcu.edu.au/scholarships)

### FINANCIAL AID FOR INTERNATIONAL STUDENTS

Depending on your home country, you may have access to financial aid programs for students studying abroad. Consult your home government to discover your options. JCU may be registered to administer financial aid on your behalf if your country offers a program. Most financial aid is in the form of a loan that must be repaid upon completion of the study period.



### DIPLOMA OF HIGHER EDUCATION

Gain a recognised qualification and entry into your chosen degree in just one year. If you don't have the prerequisites for your course, or haven't studied for a while, the Diploma of Higher Education will give you the skills and knowledge you need to succeed.

Complete first-year subjects and gain course credits to fast-track your undergraduate degree. The induction program will aid your transition to university and staff will provide you with advice and support throughout your course. Enter your undergraduate degree with a head-start in course credits, confidence, and composure.

If you apply for a course through QTAC, you may receive a Packaged Offer. A Packaged Offer provides you with a pathway to study your chosen degree, even if you don't have the prerequisites. A Diploma of Higher Education is the first phase of the package and is a way to smoothly transition from beginning university study through to starting a Bachelor degree.

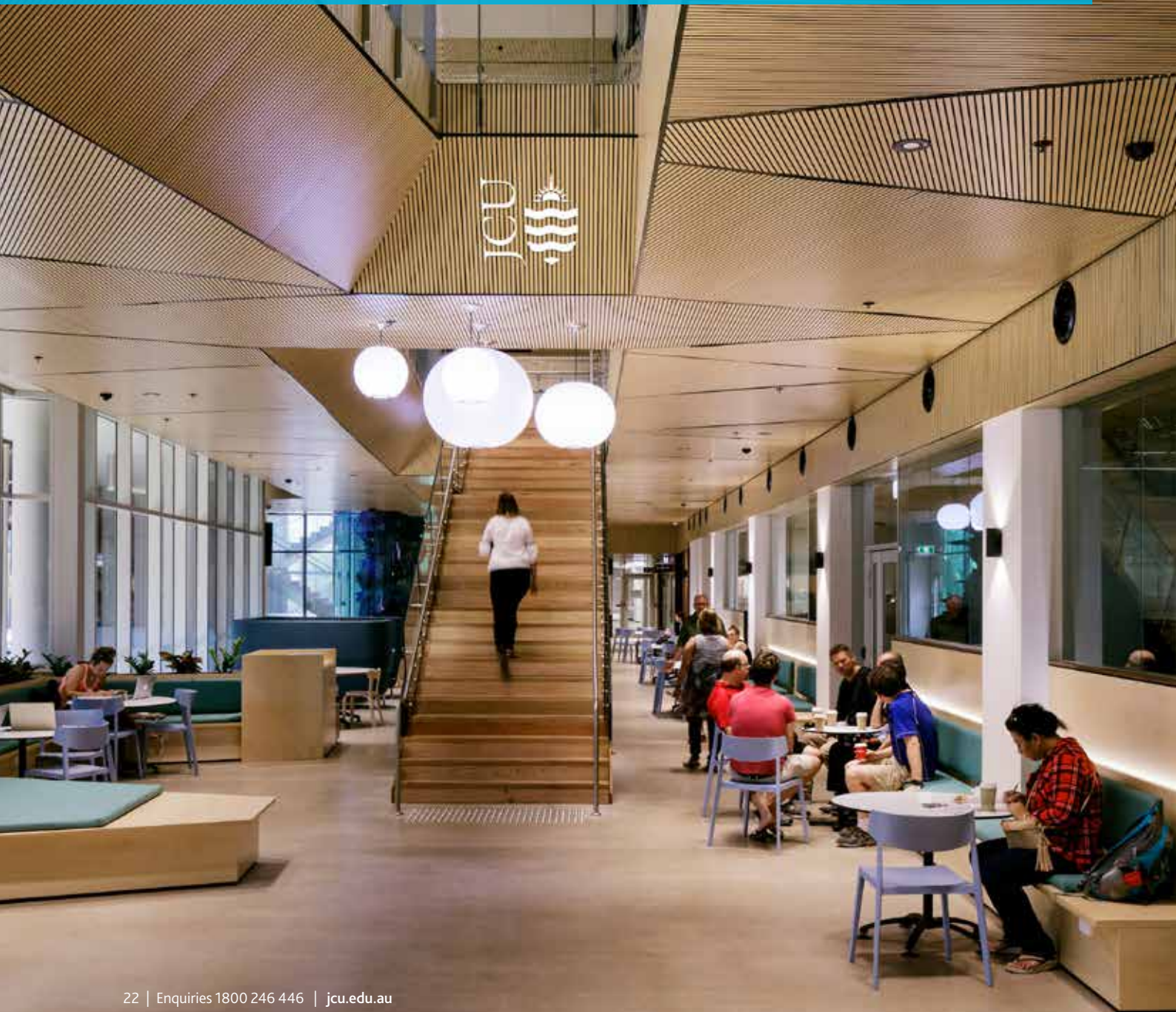
#### Available study areas

- Business
- Business Studies
- Engineering and Applied Science
- General Studies
- Health
- Information Technology
- Science
- Society and Culture

What it offers	What you gain
One-year full-time study (part-time available)	A recognised qualification
Preparatory and first-year subjects	Entry to many JCU Bachelor's degrees
Advice and support from staff before and during course	Additional credit from subjects
Induction program to support transition to university	
Tailored study plans to suit specific undergraduate degrees	

# Apply to study at JCU

*Whether you're leaving school, looking to progress in your career, upskill, or change your path entirely – wherever you're at in your study or career – there's a place at JCU for you.*





## Choosing your course and applying

### 1. How to apply

Once you've decided which course you wish to study, you can start the application process.

Applications for Semester 1 (February intake) open in August of the previous year. Many courses accept enrolment in Semester 2 (July intake). Mid-year applications close in July, for immediate start.

#### For full information on courses and how to apply

[jcu.edu.au/applying-to-jcu](http://jcu.edu.au/applying-to-jcu)

Apply through Queensland Tertiary Admissions Centre (QTAC). You can choose up to six courses for your QTAC application, which you order according to your preference. Read about preferences on the QTAC website at [qtac.edu.au/applying/apply-here/preferences](http://qtac.edu.au/applying/apply-here/preferences)

#### SPECIAL DEADLINES/APPLICATIONS

The JCU courses listed below require an additional application that you must send directly to JCU.

#### Application deadline: 30 September 2019

- Bachelor of Dental Surgery
- Bachelor of Medicine, Bachelor of Surgery\*
- Bachelor of Physiotherapy
- Bachelor of Veterinary Science

Download the additional application forms at [jcu.edu.au/division-of-tropical-health-and-medicine/application-forms](http://jcu.edu.au/division-of-tropical-health-and-medicine/application-forms)

\*Shortlisted applicants are also required to attend an interview before final selection for entry into the Bachelor of Medicine, Bachelor of Surgery.

#### ADMISSION PATHWAY - BRIDGING SUBJECTS

If you don't meet the prerequisites for your preferred course, bridging subjects can fill the gaps in your knowledge.

You may need to enrol in a bridging subject if you do not meet the entry requirements for your course. You can check these on the course page of the JCU website.

We offer mathematics and chemistry bridging subjects that can be studied on campus in Cairns and Townsville.

### 2. Accept your offer

Once your application is assessed and approved you'll receive an offer via email.

Offers are made periodically in line with QTAC offer rounds. You can check the status of your application at

[applications.qtac.edu.au](http://applications.qtac.edu.au)

#### ONCE YOU RECEIVE YOUR OFFER:

1. Log in to your application at [applications.qtac.edu.au](http://applications.qtac.edu.au)
2. Accept your offer
3. Click on 'Enrol at JCU Now' to activate your offer

### 3. Transitioning to university

JCU advisors are here to guide you through your new student experience. View the steps for new students at [jcu.edu.au/new-students](http://jcu.edu.au/new-students)

- Follow the prompts online to activate your account
- Confirm your personal details
- Plan your subjects
- Check your timetable
- Enrol in your course
- Attend OWeek at JCU

To explore the range of support services and learning resources, and to assist in your transition to uni visit [jcu.edu.au/getready4uni](http://jcu.edu.au/getready4uni)

To talk to a JCU advisor, call 1800 246 446

*"I had completely forgotten how to study. However, I got through because the people and resources at JCU are so good. I had a wonderful mentor who inspired me to become a mentor as it helped me adjust so well. I always thought that JCU believed in my capabilities before I knew what I was capable of achieving."*



#### Laura Fewtrell

BACHELOR OF SPORT AND EXERCISE SCIENCE

## Mature students

The term *mature students* includes anyone who finished school over a year ago.

If you have the skills, maturity, and commitment needed for successful tertiary study, but not the formal academic qualifications, you can still pursue your goals at JCU.

Whether you want to stay within the same career, or re-train for different opportunities, your previous work experience can be enough for you to enter one of our JCU Pathway courses, which can lead you into a Bachelor's degree.

[jcu.edu.au/pathways-to-university](http://jcu.edu.au/pathways-to-university)

You have the option to sit the Special Tertiary Admissions Test (STAT) via QTAC, which is an aptitude test and may show you are ready to step straight into an undergraduate course. You can combine your STAT results with your previous employment experience in your application.

[qtac.edu.au/applying/application-resources](http://qtac.edu.au/applying/application-resources)

If you have existing qualifications or work experience, you may be able to apply for credit to fast-track your degree. Once you're accepted into your course, the JCU enrolment team will assess your application for credit.

#### For more information

[jcu.edu.au/future-students/Mature-Students](http://jcu.edu.au/future-students/Mature-Students)

# Undergraduate degrees and diplomas

## What is a degree?

A degree is a qualification awarded to students who successfully complete a series of requirements set by a tertiary institution. Degrees are awarded in varying levels of qualification and lead to a wide range of career options and employment prospects. JCU offers undergraduate and postgraduate degrees across multiple disciplines.

## Undergraduate degrees

An undergraduate degree is a course in which you develop a high level of knowledge and expertise in a field of study. Undergraduate degrees offered by JCU include the Diploma of Higher Education or a Bachelor's degree. Students who are graduates of an undergraduate Bachelor's degree can go on to postgraduate study.

## Diploma of Higher Education

The Diploma of Higher Education is a one-year undergraduate course. The Diploma of Higher Education provides a pathway to studying a Bachelor's degree for students who do not meet academic requirements to study a Bachelor's degree or have not studied in a while. The Diploma consists of various introductory and first-year degree subjects to prepare students for entrance into a Bachelor's degree.

## Bachelor's degree

A Bachelor's degree is an in-depth course that can take between three to five years to complete full time. JCU offers a variety of Bachelor's degrees across a broad range of disciplines.

## Majors and Minors

A major is an area of study that you specialise in during your degree. Depending on your course, you may be required to choose a single or double major from a list of specified majors. An example of a single major is:

- Bachelor of Science, majoring in Marine Biology

An example of a double major is:

- Bachelor of Arts, majoring in English and History

You may also be required to choose a minor. A minor is an area of study that you specialise in to a lesser extent that complements your major.

## Subjects

Your degree consists of a specified number of subjects. A subject usually takes one university semester to complete and can include weekly lectures, tutorials, seminars, and/or practical classes. A three year full-time course typically consists of 24 subjects.

## Credit for previous study

If you have completed previous study or work experience, you may be eligible to transfer credit to your current degree. This will help you to complete your JCU degree sooner and save on overall course fees. For more information on eligibility and how to apply for credit, see

[jcu.edu.au/apply-for-credit](http://jcu.edu.au/apply-for-credit)

## Study modes

JCU offers a variety of study modes to help you succeed. Study either on- or off-campus with our flexible delivery modes. Complete your degree at your own pace – JCU offers both full-time and part-time study loads to fit in with busy lifestyles. You may be able to fast-track your studies by completing some subjects in block mode. For more information on flexible delivery modes, see

[jcu.edu.au/flexible-study](http://jcu.edu.au/flexible-study)

## Mid-year enrolment

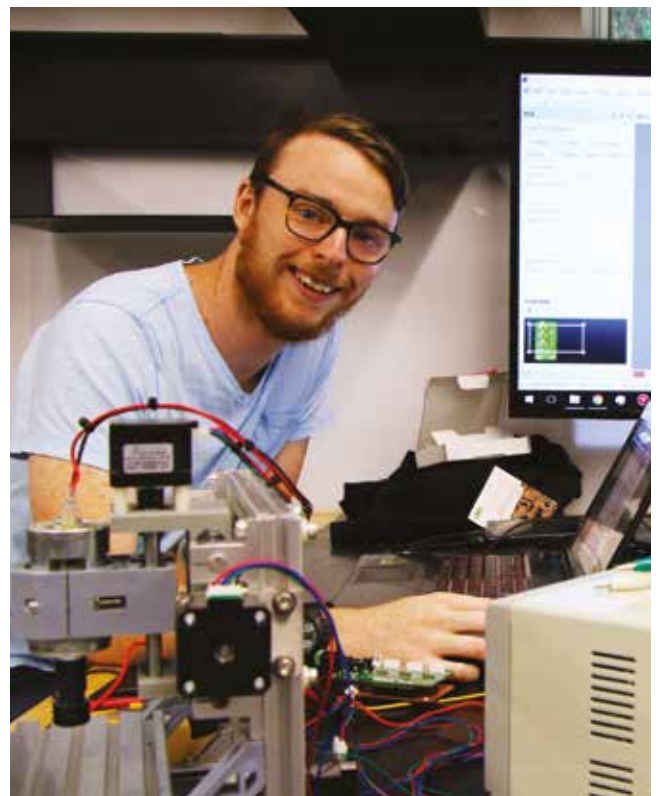
Mid-year enrolment is available for many of our undergraduate courses. Check out the Undergraduate Degrees table on pages 66-69 for more information.

## Assessment

The skills and knowledge you learn at JCU are assessed through a number of methods. These include written essays, written examinations, oral presentations, group projects, practical examinations, laboratory reports, and professional placements. You will be required to meet a satisfactory level of achievement in your assessment to graduate from your degree.

## Career outcomes

Our Careers and Employability team are here from day one to help you network, promote your skills, and prepare for the workforce. Once you have graduated, we will continue to provide support in applying for and securing your dream job.



# JCU Global Mobility

## Travel and earn your degree as you go

Love to travel? Make a lifetime of memories and earn your degree at the same time. The JCU Global Mobility Program helps students develop the knowledge, skills and disposition to succeed in a global workforce. Open your mind to exotic locations, unique experiences, and extraordinary people. Complete a placement or short course, lead a research team, or spend an entire year abroad – it’s completely up to you!

## Experience Singapore

Immerse yourself in the spectacular streets of Singapore. Spend up to two semesters experiencing the diverse culture of this vibrant country while learning from the best at JCU Singapore. Business, Education, IT, Tourism and Psychology students can choose from a variety of subjects that will count towards their degree. If you study a different discipline, you can use your electives to form a study plan. There’s something for everyone!

## Outbound Exchange Program

Broaden your horizons, develop your language skills, and build your global network through JCU’s Outbound Exchange Program. JCU has partnered with world-class universities in more than 20 countries across Europe, Asia, the South Pacific, and the Americas. Spend one or two semesters as an exchange student and study courses that can be credited towards your degree.

## Short Study Programs

Prefer a short-term trip? Several of JCU’s partner universities offer short programs or placements of 2-6 weeks that can be credited towards your JCU degree. Depending on what you study, you could complete a short course or placement in locations such as Ecuador, Germany, Japan, South Korea, or England. Short study opportunities are also available through various Australian organisations.

[jcu.edu.au/globalmobility](http://jcu.edu.au/globalmobility)

## New Colombo Plan

What better way to learn more about the Indo-Pacific region than to live and learn there? The New Colombo Plan (NCP) is an Australian Government initiative that provides opportunities for Australian undergraduate students to study, participate in internship and mentorship opportunities, and learn a new language in the Indo-Pacific region. You can apply for a scholarship, which can include a travel allowance, monthly stipend and support for language training.

## Field trip locations

### NORTH QLD

Cairns  
Mackay  
Rockhampton  
Townsville

### AUSTRALIAN CAPITAL & REGIONAL CITIES

Brisbane  
Darwin  
Hobart  
Launceston  
Melbourne

### RURAL & REMOTE

Alice Springs  
Armidale  
Barcaldine  
Cape York

Charters Towers

Chillagoe  
Chinchilla  
Gympie  
Killarney  
Mareeba  
Mount Isa  
Port Stephens  
Proserpine  
Torres Strait Islands  
Tully

### INTERNATIONAL

Cambodia  
Canada  
China  
Ecuador  
Germany  
Hong Kong

India  
Indonesia  
Fiji  
Japan  
Laos  
Norway  
Papua New Guinea  
Samoa  
Singapore  
Slovenia  
Sweden  
Thailand  
United Kingdom  
United States of America  
Vanuatu  
Vietnam



*“I know it is probably cliché but the highlight really was the entire experience. It was the best thing I have ever done in my life. It was nothing short of a dream. Keep your options open; go somewhere you wouldn’t expect. Get out of your comfort zone and keep your mind open to new people and new opportunities.”*

## Azrae Hope

BACHELOR OF ENVIRONMENTAL MANAGEMENT  
Exchange @ University of Copenhagen Denmark

# Arts and Social Sciences



## I like studying...

English, history, SOS, languages, photography, graphics, media, music, design, Aboriginal and Torres Strait Islander studies, legal studies

## I want to be a...

Writer, journalist, criminologist, humanitarian, social worker, international relations worker, anthropologist, musician, media broadcaster, graphic designer, photographer

## Bachelor of Arts

- ✔ Learn to think creatively, analyse effectively and build the critical thinking skills necessary to work in today's modern society. Gain the skills to become a digital disruptor and make a difference in the world.
- ✔ You will be taught by world-class lecturers and experience small, friendly classes and personalised support. Practical work placements ensure you are work-ready when you graduate.
- ✔ You will study a selection of core subjects and your preferred major. Each major provides you with in-depth knowledge in that study area. You can choose a second major, or select two minors, which can complement your studies, or broaden your area of expertise.

### MAJORS

### Anthropology

Study history, languages, politics, economics and social systems. Understand cultural and ethnic difference and analyse how people's beliefs fit into a wider social, political and economic context. Learn the research, observation and interview techniques that will equip you to work with people from diverse cultural backgrounds. Develop skills critical in decision making for governments, corporations and not-for profit organisations.



### Archaeology

Develop skills in archaeological site recording and conservation. Participate in field trips to investigate heritage site excavations, and Australian Aboriginal rock art sites. You may also have the opportunity to travel on South-East Asian excursions. You will learn the fundamentals of archaeology, then expand on this knowledge with more specialised offerings in evolutionary, forensic, Asian, Australian and European archaeology.



### Criminology

Learn why people are motivated to commit crime, and explore strategies to prevent law-breaking and rehabilitate offenders. Throughout your studies, you can participate in a wide range of extracurricular criminology student activities. This course equips you with skills to help make a difference in your community. Not all subjects in this major are available internally and you will need to take some subjects externally.



### Design and Creative Arts

Amplify your creativity, learn how to think differently, and bring your ideas to life. Using technical equipment, software and programs, you will explore the creative world and cultivate strong individual design aesthetics. You will complement core subjects with a range of specialisations, which vary between campuses. Cairns students focus on the visual arts and digital imaging fields. Townsville students will study future-focused design and innovation.



### English

Investigate and explore the riches of literature across the ages. You will develop your understanding of the English language and gain a high level of communication and reasoning skills while growing your passion for reading and writing. JCU English major students examine a wide range of literary periods and genres that provide a comprehensive source of historical and cultural understanding.



→ Continues over the page

#### LEGEND

- JCU Cairns
- JCU Townsville
- Study Externally
- JCU Singapore
- Brisbane Campus
- Start Semester 1
- Start Semester 2
- Course duration in years
- Professional placements
- Professional accreditation
- Work Integrated Learning (WIL)
- Field trips
- Clinical placements

*“Learning has been the highlight of university. I have enjoyed all of my subjects, especially the core Bachelor of Arts subjects, which were fascinating.”*

**Tracey Hough**

BACHELOR OF ARTS, MAJORING IN ENGLISH AND ANTHROPOLOGY

# Arts and Social Sciences



ARTS AND SOCIAL SCIENCES

## History

Gain an intimate knowledge of humanity by examining past societies and cultures. You will study the history of North Queensland, and develop your understanding of Australian history. Analyse major historical events in a global context and investigate how political, economic and environmental events shaped different communities.



## Human Geography

Explore the interactions between people, natural events and the environment, and learn how to solve major ecological and environmental problems. You will gain specialist skills including environmental and town planning, land management, regional sustainability and environmental impact assessment. Throughout your studies, you will develop proficiency in identifying problems, evaluating explanations, analysing data, and computing techniques.



## Human Services

Develop skills that will prepare you to work with marginalised and vulnerable people. Study social policy, community planning and development, education and capacity building, organisational practice and social responsibility. JCU students benefit from our research culture and working relationships with government agencies and local community groups. You will gain practical skills and experience through field trips and project work.



**LEGEND**

- JCU Cairns
- JCU Townsville
- Study Externally
- JCU Singapore
- Brisbane Campus
- Start Semester 1
- Start Semester 2
- Course duration in years
- Professional placements
- Professional accreditation
- Work Integrated Learning (WIL)
- Field trips
- Clinical placements



*“The world is becoming a lot more global and languages are definitely a good investment. They really open the world for you and broaden your perspective.”*

**Jessica Scott**

BACHELOR OF LANGUAGES IN JAPANESE

### Indigenous Studies

Expand your understanding of the complex interface between Indigenous and Western knowledge, perspectives and practices in Australia today. Explore Indigenous knowledge and traditions, colonial disruptions, and Indigenous re-assertion in the current era, from the local to the global. Some subjects include field trips and one includes an optional international trip to an Indigenous community.



### Modern Languages

Become fluent in French, German, Italian or Japanese and gain valuable skills relevant to the globalisation of today’s society. In each language you will study listening, reading, speaking and writing skills through critiquing text, films and television programs. Immerse yourself in the language with opportunities to study abroad for six months at one of JCU’s partner universities. You do not need prior knowledge of the language to undertake this major, which offers foundation to advanced levels.



### Multimedia Journalism and Writing

Gain the knowledge to succeed in fast-paced creative and news media environments. Learn from published writers, researchers and journalists to write creatively about unique environments and complex topics. Study topics like writing for multimedia, short story writing, media law and ethics, public relations campaigns, broadcast journalism, and the sociology of digital environments.



### Politics and International Relations

Take a deep dive into the people, institutions and issues involved in Australian and international politics. Explore political processes, policy, diplomacy, political economy, and globalisation of Australia and the Asia-Pacific. You will examine Australia’s global position and role, economic and social policies, traditional and non-traditional threats to security, poverty, and other topics relevant to our modern society.



### Psychology Studies

Gain a deeper understanding of the biological, social and cultural factors that influence how humans think, feel and behave. Explore the history of psychology, the nervous system, memory, cognition, intelligence, motivation, emotion, health psychology, personality and psychological disorders. You will have the opportunities to participate in current research and gain real-world skills.

This major is not accredited, if you want to become a Registered Psychologist, find out more about the Bachelor of Psychological Science or Bachelor of Psychology (Honours). This major is not available at Cairns campus.



### Sociology

Develop the analytical tools to learn how society is organised and how we experience life with each other. You will study social trends and understand why and how societies and institutions have developed through history. With a focus on the societal issues of the tropics, you will develop social science research skills and explore a diverse range of topics.



# Biomedical Sciences



## I like studying...

Biology, chemistry, physics, health education, physical education

## I want to be a...

Scientist, biochemist, laboratory technician, medical researcher, science teacher

## Bachelor of Biomedical Sciences

- ✔ Gain a thorough grounding of health and healthcare in Australia, with an emphasis on biomedicine in the tropics. Use your degree as a pathway to other health professions or higher research.
- ✔ Study human biology, from molecular to whole-body systems, and understand how the body responds to disease. Choose from one of four specialised majors and learn leading research techniques and skills from world-class medical professionals.
- ✔ Be equipped with practical work skills in state-of-the-art laboratories, hospitals, and medical centres, both on- and off-campus.
- ✔ JCU Biomedical Sciences graduates have the knowledge, skills, and competitive edge needed to succeed in their chosen fields.



## MAJORS

### Molecular and Cell Biology

Study and apply the theories of modelling natural systems, quantitative methods in science, molecular genetics, and cell biology. Consolidate and extend your knowledge by studying the molecular basis of disease, bioengineering and bioinformatics. Choose from specified elective subjects to further develop your interests, including the option of completing an advanced research project.



### Microbiology and Immunology

Study and apply the theories of epidemiology, molecular genetics, cell biology, and advanced immunobiology. Extend your knowledge by understanding and analysing the theories of infectious diseases and tropical microbes. Choose from specified elective subjects to further develop your interests.



### Medicinal and Pharmaceutical Sciences

Study and apply the general principles of drug action, molecular genetics, and cell biology. Build a comprehensive knowledge of medicinal and pharmaceutical chemistry. In your third year, you will consolidate and extend your knowledge and skills by completing a research project.



### Physiology and Pharmacology

Study and apply the theories of epidemiology, molecular genetics, cell biology and pathobiology, and choose from specified elective subjects. In your third year, you will consolidate and extend your knowledge and skills by designing and completing a research project. You will also demonstrate employment readiness by preparing a job application.



## LEGEND

- JCU Cairns
- JCU Townsville
- Study Externally
- JCU Singapore
- Brisbane Campus
- Start Semester 1
- Start Semester 2
- Course duration in years
- Professional placements
- Professional accreditation
- Work Integrated Learning (WIL)
- Field trips
- Clinical placements





*“I applied for the Bachelor of Biomedical Sciences with the end goal of Medicine. I stuck with biomed, not only because I found it interesting and engaging, but because it’s essential. While biomedical scientists aren’t front and centre like doctors are, the work we do is ground-breaking.”*

**Eva Duck**

BACHELOR OF BIOMEDICAL SCIENCES, MAJORING IN MICROBIOLOGY AND IMMUNOLOGY

## Bachelor of Medical Laboratory Science (Honours)

- ✔ Be at the cutting-edge of scientific progress with the Bachelor of Medical Laboratory Science (Honours). Become qualified to work anywhere in Australia with this degree fully accredited by the Australian Institute of Medical Scientists (AIMS).
- ✔ Understand the relationship between microbiological and chemical testing in clinical and industrial settings. Gain practical experience in public hospitals and private laboratories and build professional networks to graduate workforce ready.
- ✔ Combine theoretical studies in fields including chemistry, molecular biology, and haematology with essential skills like quality assurance and laboratory management.



BIOMEDICAL SCIENCES

## Bachelor of Clinical Sciences (Honours)

- ✔ Become a clinical scientist and make a difference. Clinical Sciences graduates are flexible, uniquely-equipped professionals who contribute valuably to both healthcare teams and scientific discovery.
- ✔ Develop a broad and flexible range of skills. You will have the opportunity to work directly with patients while contributing valuably to research.
- ✔ Gain the skills and knowledge required to provide vital scientific evidence to health professionals like General Practitioners, Physiotherapists, and Occupational Therapists. Learn the principles of medicine, chemistry, biology and experimental science and become an expert in scientific enquiry.
- ✔ In your third year, you will choose from specialised electives to suit your interests. In your final year, work directly with real-world patients in both urban and rural practical placements, and provide services for rural and remote communities.



# Business



## I like studying...

Accounting, business studies, economics, legal studies, tourism, hospitality, languages

## I want to be a...

Financial planner or analyst, accountant, economist, stockbroker, events manager, marketing officer, social media marketer, travel agent, entrepreneur

BUSINESS

## Bachelor of Business

- ✓ Equip yourself with the skills to start a successful career through a business course with a strong focus on real-world experiences. Learn about all of the elements required for managing competitive and sustainable businesses and become a valuable asset in the workplace.
- ✓ Develop an in-depth familiarity with business practices in your first year. Build a solid foundation for learning with core subjects. Tailor your degree to suit your interests. Select one major with one or two minors, or two majors.
- ✓ Student placements and projects, as well as career development tools help you make the most of your placement with a local business. Complete the optional Professional Development program to boost your employability.

### MAJORS

### Accounting

Learn to recognise financial patterns and become an efficient problem solver with an accounting major. Interpret data and make decisions with confidence and acumen. Gain an in-depth understanding of financial management, business modelling, company accounting, taxation, and auditing. Prepare for further study in accounting with this major accredited with CPA Australia and Chartered Accountants Australia and New Zealand (CAANZ).



### Banking and Finance

Develop insight into the central role of banking and finance with this major. Make decisions that help businesses thrive with an understanding of international finance and sustainable economic growth. Learn how to manage financial institutions, markets, and funds. Become confident in risk management and learn practical and theoretical management approaches for various types of institutions.



### Business Intelligence and Information Systems

Learn to work with digital information systems to manage data securely. Use your insight to identify opportunities, communicate your findings, and integrate data into operational strategies. Ensure your employability and maximise your opportunities in a rapidly growing industry. Apply for membership with the Australian Institute of Management (AIM) upon graduation.



### Economics

Explore economic theories and practices central to business decision making. Learn how people interact with markets and develop models to predict behaviour. Apply your knowledge of policy, behavioural economics, and economic growth to determine the best use of available resources. Examine contemporary economic policy alongside social welfare and sustainability.



### Financial Advising

Help bring financial goals to life with JCU's Financial Advising major. Gain the analytical skills and specialist business practices required to advise consumers on a broad range of finance areas. With an emphasis on building and maintaining customer relationships in a global context, you will help customers make informed decisions on investment, taxation, superannuation and insurance.



### Financial Management

Study decision making in financial markets and approaches to managing financial institutions. Learn essential skills including business modelling, personal portfolio management, risk management, and multinational business finance. Lead investment opportunities, plan long-term financial goals, and provide advice for maximising profit. Combine this major with Accounting, Economics or Business Intelligence and Information Systems to strengthen your skill set and employability.



### LEGEND

- JCU Cairns
- JCU Townsville
- Study Externally
- JCU Singapore
- Brisbane Campus
- Start Semester 1
- Start Semester 2
- Course duration in years
- Professional placements
- Professional accreditation
- Work Integrated Learning (WIL)
- Field trips
- Clinical placements



*“The lecturers at JCU really helped shape my degree. It was great to have teaching staff who take time to get to know you and your personal circumstances, as well as having classes that are small enough for them to be really personal.”*

**Emily Quinn**

BACHELOR OF BUSINESS, MAJORING IN MANAGEMENT AND SPORTS & EVENT MANAGEMENT

### Governance, Business and Society

Focus on the interactions between government, business, and community interests. Design creative approaches to managing complex societal issues through policy. Learn to create and establish policies and monitor policy implementation. Gain the expertise to implement positive change in organisations, government, and the wider community.



### Hospitality and Tourism Management

Learn to manage tourism and hospitality attractions, tours, events, and services. Understand your target market and create tailored experiences. Develop practical skills to handle the logistics and intricacies of event management. Manage, plan, and market with an in-depth understanding of the industry. Visit sites and conduct case studies to ground your learning in real scenarios.



### Human Resources Management

Cultivate a competitive edge in business with a Human Resources Management major. Understand the value of motivated employees and create environments that help people thrive. Build communication skills and positive employment relations to boost performance and manage organisational change.



### International Business

Examine the challenges and advantages of conducting business in a complex global environment. Cultivate a love of developing strategies and planning to operate multi-national enterprises. Learn to carve out a competitive, sustainable business position in the international marketplace. Gain practical skills with a local industry placement or study a semester in Singapore.



### Management

Learn to lead businesses in highly competitive environments, solve complex organisational problems, and plan effectively. Discover how to hire the right employees and use management techniques to cultivate success. Become confident managing finances, resources, and direct business operations in a fast-paced setting. Examine existing businesses for theoretical and practical insights.



### Marketing

Harness both traditional and digital marketing to reach the right audience every time. Build specific and comprehensive profiles for target audiences and become effective at growing a new customer base. Transfer your skills across organisations in private, public, and non-profit sectors. Stand out in a competitive marketplace with industry knowledge and sustainable marketing strategies.



### Sports and Events Management

Gain the skills to work in a dynamic, fast-paced global industry with the Sports and Events Management major. Benefit from strong industry connections and first-hand practical experience. Graduate with a strong understanding of employer needs and the ability to create, organise, and coordinate sports and public events on both small and large scales. Tailor your degree to specialise in your preferred industry.



### Bachelor of Business and Environmental Science

✔ Learn how to manage profit, policy and conservation. Develop an in-depth theoretical knowledge of sustainability and the effects of humans on the climate. Learn how to critically appraise the role and relevance of environmental science in global and local business practice and society. Apply these principles to plan and lead sustainable business and environmental practices.



# Dentistry

## I like studying...

Biology, chemistry, physics, health education

## I want to be a...

Dentist, dental hygienist, dental assistant

DENTISTRY

## Bachelor of Dental Surgery

- ✔ Make an impact in rural and remote health while equipping yourself with the internationally recognised Bachelor of Dental Surgery.
- ✔ Learn while improving oral health care in underserved communities around tropical Australia and beyond.
- ✔ Gain real life experience combining theoretical learning with extensive clinical practice. Work on real patients at JCU Dental clinics.
- ✔ Benefit from the latest technological advances in diagnosis and treatment, while studying in state-of-the-art facilities.
- ✔ Train alongside experienced, supportive professionals and explore issues of concern to Northern Australia, particularly relating to tropical, rural and indigenous practice.
- ✔ Graduate in high demand with a broad based degree covering all aspects of dental practice.



*“During my time at university, I went to Nepal with an independent company I found while networking through JCU. I was based in a village called Pokhara, where I spent a few weeks delivering dental care to locals while living in a tent on the side of a mountain. Next year, I’m planning on completing a clinical placement in Fiji, as well as spending my final year in Launceston and Mt Isa.”*

**Thomas Munro**

BACHELOR OF DENTAL SURGERY

# Education

## I like studying...

English, maths, early childhood studies, SOS, history, study of religion, business studies, science, languages, music

## I want to be a...

Primary school teacher, early childhood teacher, high school teacher, ESL teacher

EDUCATION

### Bachelor of Education (Early Childhood Education)

- ✔ Make a difference to the lives of young children. Through the Bachelor of Education (Early Childhood Education) learn how to support the development, behaviour, and wellbeing of children in childcare centres through to primary school.
- ✔ Gain professional experience in your first year and complete a total of 100 days of workplace learning over the course of your degree. Take advantage of JCU's strong partnerships with childcare centres, kindergartens, preschools, and primary schools to develop your network and build practical job skills.
- ✔ Choose the study mode that works for you. Connect with peers and academics on campus or online. The innovative online course provides the flexibility to balance work, study and family while also developing professional knowledge and skills.



### Bachelor of Education (Primary)

- ✔ Promote life-long learning in young people. Develop valuable specialist skills needed for teaching in rural and remote areas and help improve Indigenous education outcomes.
- ✔ Focus on the curriculum for children in Years One to Six and experience relevant workplace learning in primary school settings. Gain professional experience from your first year in state, Catholic, and independent schools.
- ✔ Participate in placements in rural and remote areas to expand your employment options. Learn to critically evaluate and apply contemporary research to provide inclusive learning environments.
- ✔ As part of the Bachelor of Education (Primary), you can choose one of three strands: Primary Education, Primary Special Needs, and Primary Health and Physical Education (HPE).



### Bachelor of Education Professional Development

- ✔ Build on your existing teaching qualifications and upskill with the Bachelor of Education Professional Development. Set yourself apart from your peers and demonstrate your high-level, contemporary education.
- ✔ Grow your career with specialised skills for teaching in rural and regional areas. Learn the principles and concepts essential for Indigenous education to meet the needs of Australian Aboriginal and Torres Strait Islander students.
- ✔ Study within one of three major teaching areas: Early Childhood Education, Primary Education, Secondary Education.



### Bachelor of Education (Secondary)

- ✔ Learn to establish positive and engaging learning environments for secondary school students. Develop specialised skills to meet the needs of students and communities in rural and remote areas.
- ✔ Gain a full understanding of intercultural and ethical approaches to professional practice. Base your teaching on current research and policy that addresses social justice, diversity, and sustainability.
- ✔ Take part in placements in practical settings from your very first year of study, and experience teaching in metropolitan, rural and remote locations. Make a positive difference in the lives of young people and help improve outcomes for Australian Aboriginal and Torres Strait Islander students.



**LEGEND**

- JCU Cairns
- JCU Townsville
- Study Externally
- JCU Singapore
- Brisbane Campus
- Start Semester 1
- Start Semester 2
- Course duration in years
- Professional placements
- Professional accreditation
- Work Integrated Learning (WIL)
- Field trips
- Clinical placements

*“In my final year practicum I was given the opportunity to teach at Northern Peninsula Area State College (NPASC). After five years at NPASC I transferred to Cairns West State School where I have been teaching for the past two years. The highlights of my career are the endless opportunities.”*

**Kate Coleiro**

BACHELOR OF EDUCATION (PRIMARY)

# Engineering

## I like studying...

Maths, chemistry, physics, engineering skills, engineering technology, information technology, aerospace studies, building & construction skills

## I want to be a...

Civil engineer, aerospace engineer, software engineer, chemical engineer, electrical engineer, mechanical engineer

ENGINEERING

### Bachelor of Engineering (Honours)

- ✔ Prepare yourself for the challenges of today and tomorrow through an engineering course shaped by industry. An outstanding graduate employment rate and a strong focus on hands-on skills enables you to be job ready upon graduation.
- ✔ Gain practical skills through laboratory classes and field trips. Participate in twelve weeks of work placements with industry partners.
- ✔ Build a thorough understanding of engineering fundamentals in your first year. Deepen your knowledge and focus on theoretical and practical learning as you study a specialised major plus one minor.

#### MAJORS

#### Chemical Engineering

Create, manipulate and design products using raw materials, and chemistry and physics principles. Become an expert in the intricacies of reactor design and modelling, and learn how to comprehend the concepts of instrumental analysis. Build an in-depth understanding of advanced chemical technologies such as minerals processing, extractive metallurgy and bioprocessing.



#### Civil Engineering

Benefit from JCU's expert lecturers and explore various civil engineering disciplines such as structural, hydraulic, geotechnical, transport and environmental engineering. Develop the skills required to assess the environmental impact of large projects and understand how to build community engagement. JCU graduates have a thorough understanding of how to make cities better places to live.



#### Electrical and Electronic Engineering

Learn how to design and maintain electrical energy infrastructure through the application of the electrical principles. You will integrate theory with practice and visit telecommunications companies, power utilities and mines. Build a comprehensive knowledge of electrical materials, circuit theory, single phase and three phase power system modelling and signal processing.



#### Electronic Systems and Internet of Things (IoT) Engineering

Develop sensor technologies, analyse big data and design smart technology that relates to various industries. Work with cloud computing and wireless communication utilising a state-of-the-art Internet of Things research lab. Become an innovative technology leader through access to world-class lecturers and their strong industry partnerships.



#### Mechanical Engineering

Understand the principles of mechanics and thermodynamics to analyse, design, manufacture and maintain machines across almost all industries. Learn the foundations of thermofluid mechanics and the dynamics of machine elements. Through experiential learning, apply your understanding of heat exchange, momentum and strength of materials to design machines.



#### LEGEND

- JCU Cairns
- JCU Townsville
- Study Externally
- JCU Singapore
- Brisbane Campus
- Start Semester 1
- Start Semester 2
- Course duration in years
- Professional placements
- Professional accreditation
- Work Integrated Learning (WIL)
- Field trips
- Clinical placements





*“As a student who has already made a decision on what path I will be taking after university, the industry tour was a chance for me to confirm I had made the right choice. With Project Management or Project Engineer my goal, the tour around the Science Place at JCU really assured me that that’s what I would like to do.”*

**Thomas Britton**

BACHELOR OF ENGINEERING IN CIVIL ENGINEERING

# Environmental Management

## I like studying...

Biology, chemistry, geography, agricultural science, aquatic practices, earth science, marine science

## I want to be a...

Parks and wildlife officer, environmental scientist, ecotourism consultant, environmental consultant, sustainability officer, agricultural researcher, science teacher

## Bachelor of Environmental Practice

- ✔ Prepare yourself to take on the critical environmental and sustainability challenges facing the world today. Benefitting from JCU's acclaimed reputation in environmental science, you'll learn how the biological, physical, social, economic and political spheres interact and impact on current environmental issues.
- ✔ JCU environmental practice students develop an understanding of how to manage the interactions between people and the environment to find solutions to complicated environmental problems.
- ✔ Hit the ground running with the skills employers want in an Environmental Manager. This ground-breaking course responds to the needs expressed by corporate environmental management organisations for triple bottom line outcomes – environmental, social and economic.

### MAJORS

### Biodiversity Assessment and Management

Gain the skills to enable you to assess and manage all living species, on land and in the water. Learn the essential concepts of biodiversity, biological processes and ecology. Differentiate principles of plant and animal biology and apply them in more advanced and specialised studies. Learn modern field methods and benefit from opportunities to undertake field based subjects in World Heritage listed reef and rainforest environments.



### Corporate Environmental Management

Combine business literacy and corporate sustainability with environmental skills to tackle key global sustainability challenges in terms of environmental and socio-political context. Students learn basic concepts of macro and micro economics and their interrelatedness with issues of environmental sustainability, corporate social responsibility, and sustainable development.



### Land and Water Management

Learn about physical geosciences and environmental impacts on land, wetlands, river catchments, and below the surface. You will develop your knowledge of how the Earth functions as a dynamically interactive system. With tutelage from expert lecturers, students master the fundamentals of hydrology, soil science, and geomorphic patterns and processes. Benefit from field-based studies in North Queensland with all its geologically and climatically diverse landscapes, including the Great Barrier Reef catchments.



### Urban Environments and Landscape Design

Benefit from an integrated learning approach to understanding the interactions between urban planning, urbanisation issues and urban landscapes, together with a sustainable 'design thinking' approach. Students will develop their knowledge and challenge their assumptions of the theories and principles that underlie Western urban and regional planning. Gain hands-on experience through intensive field studies in a range of remote and overseas locations.



#### LEGEND

-  JCU Cairns
-  JCU Townsville
-  Study Externally
-  JCU Singapore
-  Brisbane Campus
-  Start Semester 1
-  Start Semester 2
-  Course duration in years
-  Professional placements
-  Professional accreditation
-  Work Integrated Learning (WIL)
-  Field trips
-  Clinical placements

# Geoscience



## I like studying...

Chemistry, physics, maths, geography, agricultural science, aquatic practices, earth science, marine science

## I want to be a...

Geologist, geochemist, geophysicist, archaeologist, paleontologist, oceanographer, engineer

## Bachelor of Geology

- ✔ Benefit from specialist geological knowledge and strong industry connections to ensure you are job-ready upon graduation. JCU is the only Australian university to offer a dedicated Bachelor of Geology degree.
- ✔ Build an in-depth understanding of geoscience with a focus on exploration and mining. Learn about global economic geology and participate in current geological research projects through JCU's on-campus Economic Geology Research Unit.
- ✔ Consolidate theoretical learning with frequent field trips and on-site practice. JCU's North Queensland location and close links with mining and allied engineering industries allow unique access to fascinating locations.



1 = First year only



GEOSCIENCE



# Information Technology



## I like studying...

Information and communication technology, information processing and technology, information technology systems, technology studies, maths

## I want to be a...

Computer scientist, IT consultant, web developer, mobile application developer, game developer, software engineer

## Bachelor of Technology and Innovation

- ✔ Make a difference to modern industry. Develop the skills and knowledge to deliver safe and sustainable solutions to real-world problems.
- ✔ Put your creativity to the test, challenge yourself, and improve your problem-solving skills. Learn to extract meaning from data and find inventive ways to re-invigorate businesses.
- ✔ Combine valuable IT skills with critical thinking and innovation to help businesses run efficiently. Use your broad knowledge of technology to make appropriate recommendations and identify opportunities. Network with industry mentors and undertake a placement to graduate job-ready.

### MAJORS

#### Information Technology

Become an innovative developer with the skills to solve complex problems. Learn to apply design thinking to deliver technological solutions on a wide range of issues. Analyse technology, creativity, and disruptive innovation in the global economy and across disciplines. Study web and software development, database modelling, and programming.



#### Sensor Technologies and the Internet of Things

Investigate the world through experiential learning. Learn to use a variety of physical and chemical sensor technologies to carry out investigations and analysis across multiple scientific disciplines. Gather and analyse data to provide solutions using real-time operating systems and computer interfacing.



#### Data Science

Gain data and analytics skills highly sought-after in every industry – from government departments to internet start-ups and financial institutions. Build your understanding of data science and learn the tools of the trade, including advanced statistical modelling, data mining, machine learning, linear algebra, and data visualisation.



## Bachelor of Information Technology

- ✔ Learn from industry experts in state-of-the-art facilities. Get the latest knowledge and skills in software engineering, networking, multi-media and game design, and programming.
- ✔ You will have the opportunity to gain hands-on experience and apply your skills to real world business projects through an industry placement or project.
- ✔ JCU IT students study essential core subjects such as Gamification and Games Design, Information Security, and Data mining. You can also choose from a wide variety of optional areas of specialisation like JCU's exclusive, industry-leading Internet of Things.



### LEGEND

- JCU Cairns
- JCU Townsville
- Study Externally
- JCU Singapore
- Brisbane Campus
- Start Semester 1
- Start Semester 2
- Course duration in years
- Professional placements
- Professional accreditation
- Work Integrated Learning (WIL)
- Field trips
- Clinical placements

*“I was studying a medicine degree for three years before I realised it wasn’t my passion. I love IT and now I’m studying what I love.”*

**Ramisa Faye**

BACHELOR OF INFORMATION TECHNOLOGY

# Law



## I like studying...

Legal studies, English, languages, business studies, philosophy and reason

## I want to be a...

Lawyer, solicitor, barrister, paralegal, law clerk

### Bachelor of Laws/Bachelor of Laws (Graduate entry)

- ✔ Challenge yourself and gain exposure to contemporary issues, the latest research and new ideas across diverse areas of the practice and application of law. Take advantage of JCU's First Year Experience program for new law students, which ensures you get support and mentoring as you familiarise yourself with foundation legal skills.
- ✔ You will benefit from JCU's community links and strong support from the legal profession. The Bachelor of Laws program includes practising legal professionals who teach and tutor regularly, providing direct access to contemporary standards of practice and networking opportunities.
- ✔ JCU students learn the role of law in social, economic, environmental and political contexts and its significance for stable government, economic prosperity and the protection of individual and cultural rights.
- ✔ Enhance your career options by studying this four-year undergraduate degree, or add a JCU Laws (Graduate Entry) degree to your existing qualification with just three more years of study.



LAW



**LEGEND**

- JCU Cairns
- JCU Townsville
- Study Externally
- JCU Singapore
- Brisbane Campus
- Start Semester 1
- Start Semester 2
- Course duration in years
- Professional placements
- Professional accreditation
- Work Integrated Learning (WIL)
- Field trips
- Clinical placements

# Marine Science



## I like studying...

Biology, chemistry, aquatic practices, marine science, agricultural science

## I want to be a...

Marine biologist, oceanographer, marine conservator, botanist, geologist, engineer

## Bachelor of Marine Science

- ✔ Learn from world-leading marine scientists. Benefit from practical experiences right on the doorstep of the Great Barrier Reef and among some of the world's most pristine waterways.
- ✔ Study in JCU's advanced research aquariums and laboratories. Learn how to manage human impacts and preserve dynamic marine environments. Take the opportunity to work on Orpheus Island Research Station, or undertake research on-site at coral reefs, islands, seagrass beds and mangroves.
- ✔ You will develop high-level skills in evolving technologies that are providing solutions to previously unsolvable problems. Become proficient in the use of seabed mapping and fish assessment sonar, oceanographic sensors, and a range of technology used for gathering data above and below the waves.



MARINE SCIENCE

# Medicine

## I like studying...

Biology, chemistry, health education, physical education

## I want to be a...

Doctor, surgeon, GP, immunologist, neurologist, paediatrician

MEDICINE

## Bachelor of Medicine, Bachelor of Surgery

- ✔ Equip yourself for a medical career with adventure, skills and impact with the Bachelor of Medicine, Bachelor of Surgery.
- ✔ Develop extensive clinical skills to make a real difference in the health of regional, rural, remote and Australian Aboriginal and Torres Strait Islander communities.
- ✔ Excel with small classes and personalised support from passionate teachers in Northern Australia's only six-year medical program.
- ✔ Consolidate theoretical study with hands-on clinical placements from your first year.
- ✔ Build a deep understanding of rural, remote and tropical medicine with clinical schools across Queensland's north.
- ✔ Gain valuable experience with extended placements in diverse communities from the outback to the Torres Strait.
- ✔ Become a leader in socially accountable medicine, graduating as a highly regarded, work-ready health professional.



**LEGEND**

- JCU Cairns
- JCU Townsville
- Study Externally
- JCU Singapore
- Brisbane Campus
- Start Semester 1
- Start Semester 2
- Course duration in years
- Professional placements
- Professional accreditation
- Work Integrated Learning (WIL)
- Field trips
- Clinical placements





MEDICINE

*“I’m on the Rural Generalist Program Pathway. I feel so fortunate to have early on found a career that combines my passion for the country and my desire to be a part of a community, contributing valuably and having a mighty good time along the way.”*

**Katie Marsden**

BACHELOR OF MEDICINE, BACHELOR OF SURGERY

# Nursing and Midwifery

## I like studying...

Biology, chemistry, maths, first-aid, health science

## I want to be a...

Registered nurse, registered midwife, rural nurse, health administration nurse, disaster management and relief nurse, public health nurse, nurse case manager, occupational nurse, nurse unit manager

NURSING AND MIDWIFERY

### Bachelor of Nursing Science

- ✔ This course will prepare you for work in multiple settings from large metropolitan hospitals to rural and isolated practice clinics. Gain a deep understanding of healthcare issues from JCU's leading academics. Develop strong critical thinking skills that inform professional practice.
- ✔ Learn how to assess clients, communicate with people from diverse cultural backgrounds, plan and implement nursing interventions, and manage and evaluate nursing care. Benefit from extensive supervised professional practice and clinical experience in real world settings from year one.
- ✔ Gain a unique perspective of regional and remote health care by living and studying in Mackay or Mount Isa. JCU Bachelor of Nursing Science students can access Study Centres and facilities at either location, as well as opportunities for hands-on learning and clinical experience.



### Bachelor of Nursing Science – Bachelor of Midwifery

- ✔ Benefit from the wisdom of experienced nurses and midwives who care about your success. Be supported in your transition to clinical practice by problem-solving and case-based learning, working in JCU's clinical simulation facilities.
- ✔ Gain valuable skills during extensive professional or clinical placements to ensure you are job ready upon completion. You will have the opportunity to work closely with Australian Aboriginal and Torres Strait Islander people and communities.
- ✔ JCU Nursing and Midwifery students learn from an integrated curriculum in which all aspects of a topic are linked and explored together — no waiting for another subject to find out what it all means. You will gain unique knowledge that has a distinctive rural, regional and tropical focus



**LEGEND**

- JCU Cairns
- JCU Townsville
- Study Externally
- JCU Singapore
- Brisbane Campus
- Start Semester 1
- Start Semester 2
- Course duration in years
- Professional placements
- Professional accreditation
- Work Integrated Learning (WIL)
- Field trips
- Clinical placements



*“After I graduate, I want to head to a rural town and work in collaboration with other health professionals to help bring birthing back to rural and remote areas.”*

**Laura Jensen**

BACHELOR OF NURSING SCIENCE – BACHELOR OF MIDWIFERY

# Occupational Therapy

## I like studying...

Sports, biology, health science, art, dance

## I want to be a...

Health promotion specialist, occupational therapist, art therapist, dance movement psychotherapist, ergonomist, high intensity therapist, occupational therapist, sports therapist

OCCUPATIONAL THERAPY

## Bachelor of Occupational Therapy (Honours)

- ✔ Make a meaningful difference in the community with an Occupational Therapy degree from JCU. Assist people in overcoming limitations in their daily lives and occupations.
- ✔ Take a special focus on occupational therapy in rural and remote settings and become equipped to handle the unique challenges of these areas. Learn theory, professional practice, and management skills for a diverse range of clients and circumstances.
- ✔ Take part in over 1,000 hours of professional work placements to develop the experience necessary to excel in your career. Sharpen your skills at the JCU Health Occupational Therapy Clinic on campus in Townsville.



*“I like that there are so many different areas you could work in as an OT. You could work in mental health, paediatrics, aged care, hospitals, community-based work, and so much more. It is so diverse that every day is different.”*

**Cheyenne Gamble**

BACHELOR OF OCCUPATIONAL THERAPY

# Pharmacy

## I like studying...

Chemistry, health science, biology, maths

## I want to be a...

Pharmacist, community pharmacist, hospital pharmacist, research and development manager, quality manager, laboratory analyst, research scientist

PHARMACY

## Bachelor of Pharmacy (Honours)

- ✔ Equip yourself for an in-demand career across the science and healthcare sectors with the nationally recognised Bachelor of Pharmacy (Honours).
- ✔ Gain a competitive edge through its unique placement program, acquiring clinical skills of the highest standard with more than 600 hours of placements.
- ✔ Experience diverse settings in hospitals and community pharmacies in rural, remote, and urban regions.
- ✔ Benefit from small classes with superb teaching facilities, and experienced, approachable lecturers.
- ✔ Build your understanding of medical breakthroughs, the effect of drugs, formulating medicines, treating disease and counselling patients.
- ✔ Gain expertise in areas including biochemistry, microbiology, immunology, infectious diseases and toxicology.
- ✔ Expand your knowledge with exciting research projects.
- ✔ Graduate work ready with extensive knowledge of medicines, preventative health care and excellent communication skills.



**LEGEND**

- JCU Cairns
- JCU Townsville
- Study Externally
- JCU Singapore
- Brisbane Campus
- Start Semester 1
- Start Semester 2
- Course duration in years
- Professional placements
- Professional accreditation
- Work Integrated Learning (WIL)
- Field trips
- Clinical placements

*“Being a pharmacist is a diverse role because you’re at the forefront of health care in rural and remote areas.”*

**Selina Taylor**

BACHELOR OF PHARMACY

# Physiotherapy

## I like studying...

Biology, sports, health science, chemistry

## I want to be a...

Physiotherapist, physical therapist, paediatric physiotherapist, clinical reviewer, healthcare recruiter, neurological physiotherapist, orthopaedic physiotherapist, geriatric physiotherapist, sports physiotherapist

PHYSIOTHERAPY

## Bachelor of Physiotherapy

- ✔ Make a difference with the Bachelor of Physiotherapy, accredited with the Australian Physiotherapy Council. Receive complete support with mentoring in your first year and network with students from occupational therapy, speech pathology, and clinical exercise physiology.
- ✔ Focus on ethical and professional practice alongside extensive clinical placements to be prepared for every aspect of the job. Develop special skills to meet the needs of people in rural, remote, and Indigenous communities.
- ✔ Take part in clinical placements in urban, rural, and remote locations and develop your clinical skills at the JCU Musculoskeletal Physiotherapy Clinic.



<b>LEGEND</b>	JCU Cairns	JCU Townsville	Study Externally	JCU Singapore	Brisbane Campus	Start Semester 1	Start Semester 2
	Course duration in years	Professional placements	Professional accreditation	Work Integrated Learning (WIL)	Field trips	Clinical placements	





*“I really enjoyed my placements while studying, some of which were really interesting, like the Acute Neurology Rehabilitation Ward at Townsville Hospital, and the Surgical Ward at the Cairns Base Hospital. I have been employed as a full-time school based physiotherapist with the Department of Education in Townsville.”*

**Michale Chandler**

BACHELOR OF PHYSIOTHERAPY

# Planning

## I like studying...

Geography, maths, law, information technology

## I want to be a...

Planner, principal planner, policy analyst, consultant, transportation planner, city planner, research analyst, urban planner, regional planner, land use planner, environmental assessment analyst

## Bachelor of Planning

- ✔ Study the Bachelor of Planning at JCU in the heart of tropical Northern Queensland. Experience the relationship and coexistence between World Heritage listed tropics, the Great Barrier Reef, and rapidly expanding cities.
- ✔ Learn to design cities and urban areas from their appearance to their services and facilities. Create balance between lifestyle and sustainability to support communities.
- ✔ Gain practical work experience with state government departments, non-government organisations, and private consultancies. Network with industry players to graduate with a head start. This course is fully accredited by the Planning Institute of Australia.



PLANNING



**LEGEND**

- JCU Cairns
- JCU Townsville
- Study Externally
- JCU Singapore
- Brisbane Campus
- Start Semester 1
- Start Semester 2
- Course duration in years
- Professional placements
- Professional accreditation
- Work Integrated Learning (WIL)
- Field trips
- Clinical placements

# Psychology



## I like studying...

Biology, maths, English, social science

## I want to be a...

Psychologist, community services organiser, business or market researcher, clinical psychologist, forensic psychologist, organisational psychologist

### Bachelor of Psychological Science

- ✔ Study the human mind and develop a strong foundation of psychological theory, practice, and research skills. You will gain expertise in analytical thinking and scientific research methods relevant to a broad range of careers and further study.
- ✔ You will study a core program in Psychology along with additional electives to suit your interests. Choose from a range of specialised subjects, including memory and cognition, behavioural research design and analysis, cognitive neuroscience, psychopathology, intercultural psychology, and social psychology.
- ✔ Access world-class research and observation facilities, including a Psychology Clinic at JCU Townsville.
- ✔ JCU Psychological Science graduates are innovative, critical thinkers who are widely-skilled and contribute valuably in their chosen fields.



### Bachelor of Psychology (Honours)

- ✔ Study the human mind and develop a strong foundation of psychological theory, practice, and research skills. You will study a three-year undergraduate course followed by an honours year.
- ✔ In your first three years, you will study a core Psychology program, including topics of behavioural and cognitive neuroscience, forensic psychology, intercultural psychology, and psychopathology. You will also choose from a range of specialised elective subjects.
- ✔ Extend this knowledge in your final year to plan and execute a research thesis to suit your interests. Access world-class research and observation facilities with teaching by leading industry professionals.
- ✔ Begin your career in Psychology. JCU Psychology (Honours) graduates are analytical thinkers equipped to contribute valuably to a broad range of industries and further study.



PSYCHOLOGY



# Science



## I like studying...

Physics, biology, geography, maths

## I want to be a...

Scientist, botanist, zoologist, professor, technician, research assistant, field researcher, climate scientist, environmental scientist, forensic scientist, medical scientist, toxicologist

## Bachelor of Science

- ✓ Develop your passion for innovation and make a genuine difference to your community and the environment. Undertake research in World Heritage listed reef and rainforest environments and be supported by leading lecturers.
- ✓ You will have the opportunity to access state-of-the-art research and teaching facilities, like JCU Science Place. At JCU, students get an outstanding education from the world's best institution for marine and freshwater biology studies and biodiversity conservation.
- ✓ Learn the fundamentals of science in your first year, then select one or two specialisations to continue to build knowledge and skills in your chosen discipline.

### MAJORS

### Aquaculture Science and Technology

Benefit from access to the Marine and Aquaculture Research Facility for hands-on discovery of the sustainable practices of aquaculture. Students explore the scientific and practical applications of breeding, rearing and harvesting of plants and animals in all types of water environments. JCU graduates have a deep understanding of the biodiversity of species, the design of aquaculture systems and the basics of nutrition.



### Chemistry

With award-winning laboratories at the JCU Science Place and access to industry leaders, students benefit from small class sizes and the personalised approach of lecturers. Accredited by the Royal Australian Chemical Institute (RACI), a JCU Chemistry major provides skills in analytical chemistry, synthetic, organic and inorganic chemistry, and kinetics and mechanisms of chemical reactions.



### Data Science

Gain data and analytics skills highly sought-after in every industry – from government departments to internet start-ups and financial institutions. Build your understanding of data science and learn the tools of the trade, including advanced statistical modelling, data mining, machine learning, linear algebra, and data visualisation.



### Earth Science

With access to state-of-the-art facilities like JCU Fletcherview Field Station, JCU students gain practical skills studying and assessing the unique, biodiverse region of North Queensland. Build your understanding of the effect of humans on the natural environment and build skills to develop solutions to lessen the impact. Graduates have a thorough understanding of how to develop cost-effective and innovative techniques for environmental management.



### Marine Biology

Benefit from access to one of the most diverse and fragile marine ecosystems in the world, the Great Barrier Reef. With opportunities to do hands-on research at world-class JCU Orpheus Island Field Station, you will learn from expert lecturers and benefit from researchers' strong links with industry. Graduates deeply understand humans impact on the marine environment and how the oceans and atmosphere interact. You will be equipped to address critical challenges facing marine and coastal ecosystems.



1 = First year only

→ Continues over the page

#### LEGEND

- JCU Cairns
- JCU Townsville
- Study Externally
- JCU Singapore
- Brisbane Campus
- Start Semester 1
- Start Semester 2
- Course duration in years
- Professional placements
- Professional accreditation
- Work Integrated Learning (WIL)
- Field trips
- Clinical placements



*“At JCU, there is a lot of opportunity for hands-on learning and many of the science subjects integrate this into their coursework to give you heaps of experience working in a lab or out in the field. I really enjoyed all of the practical components as it gave me opportunities to use my knowledge in real-time situations and see the results of actual experiments. It also gives students the ability to use new equipment and tools – the laboratory facilities here at JCU are fantastic.”*

**Lauren Taylor**

BACHELOR OF SCIENCE, MAJORING IN MOLECULAR & CELL BIOLOGY

SCIENCE

# Science



SCIENCE

## Mathematics

Develop highly sought after problem-solving, analytical and quantitative reasoning skills. You will gain a thorough understanding of various mathematical techniques, data analysis, and multivariate statistical methods. JCU graduates have the skills to formulate mathematical models and use various techniques to help find solutions.



## Molecular and Cell Biology

Gain hands-on experience using cutting-edge equipment and techniques. Develop an in-depth understanding of molecular genetics. Learn how to amplify and edit DNA sequences and conduct laboratory-based and field-based projects. JCU students study the basis of health and disease at a molecular level and analyse the functions of a whole cell. Graduates have the foundations needed to work towards developments of modern medicine and biotechnology.



## Physics

Develop the expertise to explore some of the universe's most challenging questions. Accredited by the Australian Institute of Physics, a Physics major at JCU provides you with knowledge and skills across multiple physics disciplines.

Students learn the fundamentals of energy, quantum mechanics, relativity, antimatter, weather, and climate. The ability to think critically and be experimental is built by exploring biophysics, molecular electronics, and organic solar cells. You will study the structure of matter, atomic and nuclear physics, quantum physics, oceanography and meteorology, and thermodynamics.



1 = First year only

## Zoology and Ecology

Study amazing rainforests and diverse species. Go on field trips to Borneo or the Galapagos Islands. Access the JCU Daintree Rainforest Observatory to learn about biosecurity, behavioural ecology, conservation biology and ecological modelling. Perform research in one of the most biodiverse regions in Australia. JCU students learn from world experts, studying the science of the biology of plants and animals and the natural world that they live in.



## Bachelor of Advanced Science

- Become a science and research leader. JCU Advanced Science graduates are elite, innovative professionals who are equipped for the future.
- Pursue excellence in JCU's Bachelor of Advanced Science program. Learn from world-renowned lecturers, meet experts in their field and conduct hands-on research in North Queensland's unique tropical environment.
- Develop your passion and choose from nine different majors. You will also choose from a set of core advanced skill subjects to develop analytical and modelling skills that are highly sought-after by future employers.
- Apply your skills and knowledge to real-world research projects and be published in international scientific journals. Go on overseas exchange programs and study natural environments in other parts of the world. Use your degree as a pathway to higher research.

### MAJORS

You can choose from nine different Science majors. These include Aquaculture Science and Technology, Chemistry, Data Science, Earth Science, Marine Biology, Mathematics, Molecular and Cell Biology, Physics, and Zoology and Ecology.

### LEGEND

- JCU Cairns
- JCU Townsville
- Study Externally
- JCU Singapore
- Brisbane Campus
- Start Semester 1
- Start Semester 2
- Course duration in years
- Professional placements
- Professional accreditation
- Work Integrated Learning (WIL)
- Field trips
- Clinical placements

# Social Work



## I like studying...

Social science, English, legal studies

## I want to be a...

Social worker, child welfare social worker, child protection officer, public health social worker, school social worker, direct caseworker, youth worker, support worker

## Bachelor of Social Work

- ✔ Develop your passion to help people flourish and work towards creating a just and equitable society.
- ✔ Expand your horizons with JCU's focus on Australian Aboriginal and Torres Strait Islander frameworks and international social work contexts for practice. You will benefit from our strong emphasis on professional practice experience, with practical skills integrated in every year of the degree.
- ✔ JCU students have the opportunity to combine topics from a wide range of study areas, together with hands-on experience gained in comprehensive field placements. This four year full-time course is fully accredited.



SOCIAL WORK



# Speech Pathology

## I like studying...

Biology, maths, English, health science

## I want to be a...

Speech pathologist, paediatric speech pathologist, aged care speech pathologist, speech language pathologist

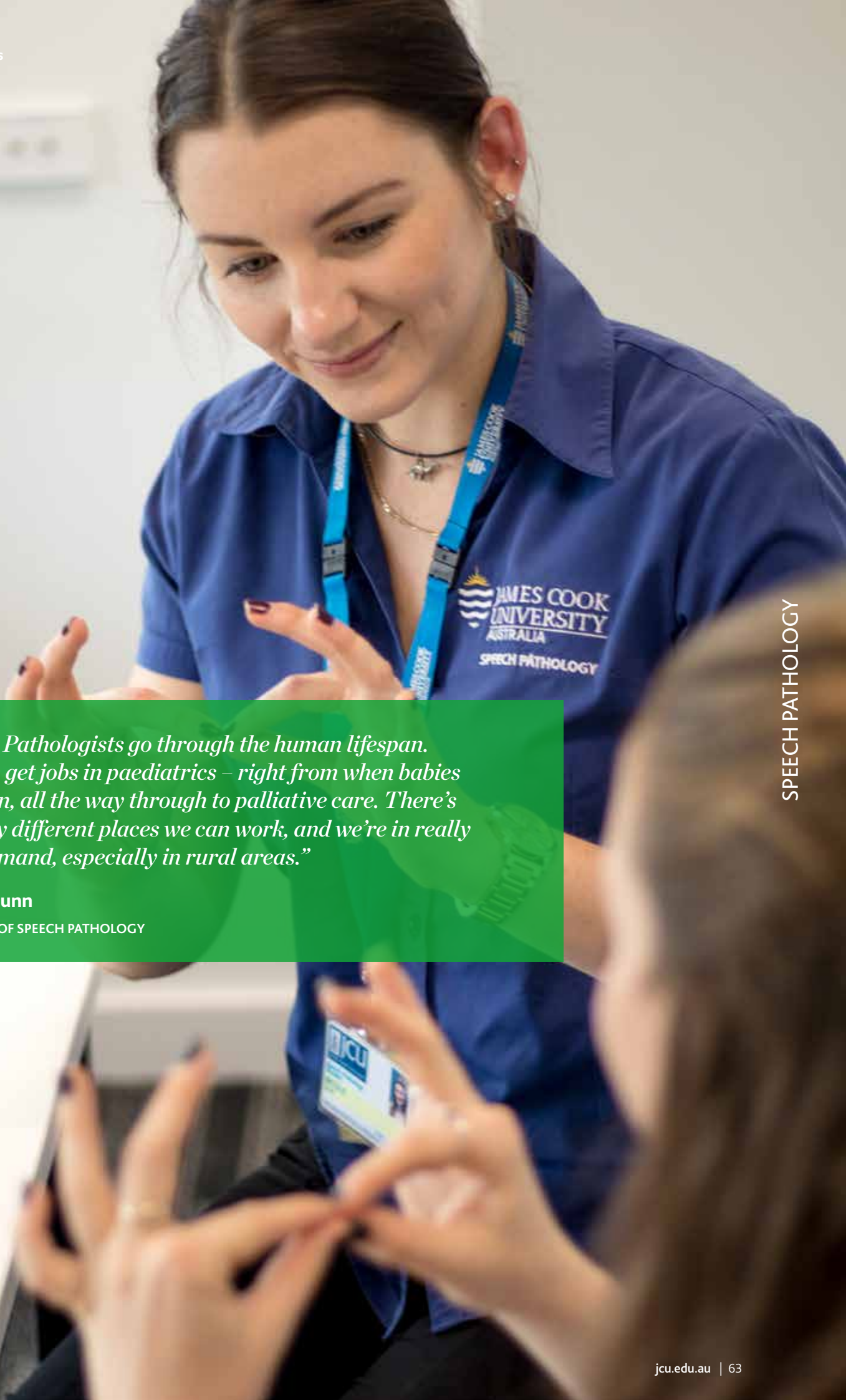
## Bachelor of Speech Pathology (Honours)

SPEECH PATHOLOGY

- ✔ Prepare for a rewarding career working with children and adults suffering from communication and/or swallowing difficulties. JCU Speech Pathology graduates are equipped with specialised, job-ready skills to meet the unique needs of tropical, rural, and Indigenous communities.
- ✔ Acquire a thorough understanding in areas such as anatomy, linguistics, and speech development and impairment. Learn how to diagnose and manage a diverse range of cases and benefit from JCU's on-campus speech and language clinic.
- ✔ Practical placements challenge you to apply your theoretical knowledge in a variety of settings. You will have the opportunity to complete placements in rural and Indigenous communities, as well as overseas.







*“Speech Pathologists go through the human lifespan. You can get jobs in paediatrics – right from when babies are born, all the way through to palliative care. There’s so many different places we can work, and we’re in really high demand, especially in rural areas.”*

**Nicole Dunn**

BACHELOR OF SPEECH PATHOLOGY

# Sport and Exercise Science

## I like studying...

Sports, biology, health science

## I want to be a...

Sport trainer, exercise scientist, corporate health officer, performance analyst, personal trainer, sports scientist, strength and conditioning coach

SPORT AND EXERCISE SCIENCE

### Bachelor of Sport and Exercise Science

- ✔ Gain a comprehensive understanding of how the human body responds to physical activity. Be equipped with theoretical and practical skills to help individuals and athletes improve their physical performance.
- ✔ Learn the scientific principles underlying the benefits of physical activity, focusing on the role of sport and exercise. Analyse and evaluate performance in JCU's world-class technical, training and testing facilities.
- ✔ Benefit from practical work experience alongside industry professionals. Assess, design, and deliver specialist exercise programs for a variety of people, from community members to elite athletes.
- ✔ JCU Sport and Exercise Science graduates are highly-competent, motivated, and career-ready professionals.



### Bachelor of Exercise Physiology (Clinical)

- ✔ Learn how to support health and recovery in people with injury, chronic disease and complex care needs. Assess clients and design and deliver exercise programs to improve quality of life.
- ✔ In your first two years, you will develop a strong understanding of human movement and the relationship between exercise and health management. Explore advanced sport and exercise science, including psychological and behavioural principles that affect wellbeing.
- ✔ Take advantage of JCU's world-class lecturers and training facilities. In your final two years, complete a variety of practical placements in community-based clinics alongside leading industry professionals.
- ✔ JCU Exercise Physiology (Clinical) graduates are knowledgeable, job-ready professionals who are sought after in the health industry.



**LEGEND**

- JCU Cairns
- JCU Townsville
- Study Externally
- JCU Singapore
- Brisbane Campus
- Start Semester 1
- Start Semester 2
- Course duration in years
- Professional placements
- Professional accreditation
- Work Integrated Learning (WIL)
- Field trips
- Clinical placements

# Veterinary Science



## I like studying...

Biology, chemistry, health science, maths

## I want to be a...

Veterinarian, veterinarian technician, animal care workers, veterinarian assistant, zoo keeper

## Bachelor of Veterinary Science

- ✔ Develop unique skills and insight to make a difference to animal health and welfare. Be equipped with the skills to diagnose, treat and prevent disease in a wide range of companion, production, aquatic, and native animals.
- ✔ You will gain in-depth foundational knowledge throughout your degree, as well as specialist rural and tropical veterinary science skills.
- ✔ Take advantage of JCU's real-world teaching settings, including an on-campus Veterinary and Emergency Centre and Hospital and a local working cattle station for livestock production. In your final two years, you will complete a variety of clinical placements in both rural and urban settings.
- ✔ JCU Veterinary Science graduates are internationally recognised as multi-skilled, highly-competent professionals who are committed to the health and welfare of animals.



VETERINARY SCIENCE

# 2020 Undergraduate degrees and diplomas

Bachelor Degrees with Majors	Prerequisite subjects	Years (full-time)	Campus availability and QTAC codes			Mid-year entry	OP/RANK	ATAR to QTAC conversion
			Cairns	Townsville	Online			
<b>Arts</b>								
Anthropology	English	3	321031	311031	-	yes	19/60	51.65
Archaeology	English	3	321031	311031	-	yes	19/60	51.65
Criminology	English	3	-	311031	311039 (Ext)	yes	19/60	51.65
Design & Creative Arts	English	3	TBA	TBA	-	yes	19/60	51.65
English	English	3	321031	311031	311039 (Ext)	yes	19/60	51.65
History	English	3	321031	311031	-	yes	19/60	51.65
Human Geography	English	3	321031	311031	-	yes	19/60	51.65
Human Services	English	3	321031	311031	-	yes	19/60	51.65
Indigenous Studies	English	3	321031	311031	-	yes	19/60	51.65
Modern Languages	English	3	321031	311031	311039 (Ext)	yes	19/60	51.65
Multimedia Journalism & Writing	English	3	-	311031	-	yes	19/60	51.65
Politics & International Relations	English	3	321031	311031	311039 (Ext)	yes	19/60	51.65
Psychological Studies	English	3	-	311031	-	yes	19/60	51.65
Sociology	English	3	321031	311031	-	yes	19/60	51.65
<b>Biomedical Sciences<sup>1</sup></b>	English; Chemistry; Maths B Recommended: one of Biology, Health Education, Physical Education or Physics	3	-	316071	-	no	16/65	61.80
<b>Business</b>								
Accounting	English; (Maths B desirable)	3	322151	312151	312159 (Ext)	yes	19/60	51.65
Banking & Finance	English; (Maths B desirable)	3	-	-	312159 (Ext)	yes	19/60	51.65
Business Intelligence & Information Systems	English; (Maths B desirable)	3	322151	312151	312159 (Ext)	yes	19/60	51.65
Economics	English; (Maths B desirable)	3	-	312151	312159 (Ext)	yes	19/60	51.65
Financial Advising	English; (Maths B desirable)	3	322151	312151	312159 (Ext)	yes	19/60	51.65
Financial Management	English; (Maths B desirable)	3	-	312151	312159 (Ext)	yes	19/60	51.65
Governance, Business & Society	English; (Maths B desirable)	3	322151	312151	312159 (Ext)	yes	19/60	51.65
Hospitality & Tourism Management	English; (Maths B desirable)	3	-	-	312159 (Ext)	yes	19/60	51.65
Human Resources Management	English; (Maths B desirable)	3	322151	312151	312159 (Ext)	yes	19/60	51.65
International Business	English; (Maths B desirable)	3	322151	312151	312159 (Ext)	yes	19/60	51.65
Management	English; (Maths B desirable)	3	322151	312151	312159 (Ext)	yes	19/60	51.65
Marketing	English; (Maths B desirable)	3	-	312151	312159 (Ext)	yes	19/60	51.65
Sports & Events Management	English; (Maths B desirable)	3	-	312151	312159 (Ext)	yes	19/60	51.65
<b>Business &amp; Environmental Science</b>	English; Maths B	3	-	316341	-	yes	17/63	56.55
<b>Clinical Sciences (Honours)</b>	English; Chemistry; Maths B Recommended: One of Biology, Health Education, Physical Education or Physics	4	-	317291	-	no	15/67	-
<b>Dental Surgery<sup>1</sup></b>	English; Chemistry; Maths B Recommended: Biology + separate JCU application <sup>5</sup>	5	327091	-	-	no	SER	-
<b>Education (Early Childhood Education)</b>	English; Maths A, B or C; plus an authority Science subject	4	323311	313311	313319 (Flex)	yes	14/69	66.30
<b>Education (Primary)</b>	English; Maths A, B or C; plus an authority Science subject	4	323211	313211	-	yes	14/69	66.30
<b>Education Professional Development</b>	Completion of an AQF Level 5 Diploma of Teaching or an equivalent or higher qualification in Education that includes a pass in professional experience.	1	323031	313031	-	yes	N/A	-

Bachelor Degrees with Majors	Prerequisite subjects	Years (full-time)	Campus availability and QTAC codes			Mid-year entry	OP/ RANK	ATAR to QTAC conversion
			Cairns	Townsville	Online			
<b>Education (Secondary)</b>	English; Maths A, B or C.	4	323111 <sup>4</sup>	313111	-	yes	14/69	66.30
<b>Engineering (Honours)</b>								
Chemical	English; Maths B	4	324021 <sup>2</sup>	314021	-	Tsv only	12/74	72.60
Civil	English; Maths B	4	324021 <sup>2</sup>	314021	-	Tsv only	12/74	72.60
Electrical & Electronic	English; Maths B	4	324021 <sup>2</sup>	314021	-	Tsv only	12/74	72.60
Electronic Systems & Internet of Things	English; Maths B	4	324021	314021 <sup>3</sup>	-	no	12/74	72.60
Mechanical	English; Maths B	4	324021 <sup>2</sup>	314021	-	Tsv only	12/74	72.60
<b>Environmental Practice</b>								
Biodiversity Assessment & Management	Assumed Knowledge: English; Maths B Recommended Study: At least one of Biology, Chemistry, Earth Science, Geography, Maths C or Physics	3	326431	316431	-	yes	17/67	60.20
Corporate Environmental Management	Assumed Knowledge: English; Maths B Recommended Study: At least one of Biology, Chemistry, Earth Science, Geography, Maths C or Physics	3	326431	316431	-	yes	17/63	60.20
Land & Water Management	Assumed Knowledge: English; Maths B Recommended Study: At least one of Biology, Chemistry, Earth Science, Geography, Maths C or Physics	3	326431	316431	-	yes	17/63	60.20
Urban Environments & Landscape Design	Assumed Knowledge: English; Maths B Recommended Study: At least one of Biology, Chemistry, Earth Science, Geography, Maths C or Physics	3	326431	316431	-	yes	17/63	60.20
<b>Exercise Physiology (Clinical)<sup>1</sup></b>	English; Maths A, B or C Recommended: one of Biology, Chemistry, Physics, Health Education or Physical Education	4	-	317071	-	no	15/66	61.85
<b>Geology</b>	Assumed Knowledge: English; Maths B Recommended Study: At least one of Biology, Chemistry, Earth Science, Geography, Maths C or Physics	3	326311 <sup>2</sup>	316311	-	yes	16/65	60.20
<b>Information Technology</b>	English; (Maths B desirable)	3	322341	312341	312349 (Ext)	yes	17/63	56.55
<b>Laws</b>	English	4	321061	311061	-	yes	12/74	72.60
<b>Laws (Graduate entry)</b>	Completion of an AQF level 7 bachelor degree in any discipline	3	322161	312161	-	yes	prior study	-
<b>Marine Science</b>	Assumed Knowledge: English; Maths B Recommended Study: At least one of Biology, Physics, Maths C, Earth Science or Geology	3	-	316251	-	yes	12/74	72.60
<b>Medical Laboratory Science (Honours)<sup>1</sup></b>	English, Maths B; Chemistry Recommended: one of Biology, Health Education, Physical Education or Physics	4	-	316121	-	no	16/64	61.80
<b>Medicine, Surgery</b>	English; Maths B; Chemistry; <i>+ separate JCU application<sup>2</sup> and an interview</i>	6	-	317012	-	no	SER	-
<b>Nursing Science</b> (Post-registration)	Registered Nurse	1	326041	316041	316049 (Flex) 336041 (Mk) 346041 (Mt)	no	prior study/ 74	-
<b>Nursing Science<sup>1</sup></b> (Pre-registration)	English. Recommended: Biology; Chemistry or Maths, A, B or C	3	326031	316031	336031 (Mk) 346031 (Mt)	yes	16/65	60.20
<b>Nursing Science</b> (Pre-registration) Flexible delivery mode	English. Recommended: Biology; Chemistry or Maths, A, B or C	3	-	-	316139 (Flex)	yes	15/67	63.40
<b>Nursing Science - Midwifery</b>	English. Recommended: Biology; Chemistry or Maths, A, B or C	4	-	317122	-	no	9/82	81.45

## Degree and Diploma overview

Bachelor Degrees with Majors	Prerequisite subjects	Years (full-time)	Campus availability and QTAC codes			Mid-year entry	OP/RANK	ATAR to QTAC conversion
			Cairns	Townsville	Online			
<b>Occupational Therapy (Honours)<sup>1</sup></b>	English; plus one of Chemistry, Biology, Physics, Physical Education or Health Education	4	-	316101	-	no	14/69	66.30
<b>Pharmacy (Honours)<sup>1</sup></b>	English; Maths B; Chemistry	4	-	316151	-	no	12/74	72.60
<b>Physiotherapy<sup>1</sup></b>	English; Maths B; plus one of Chemistry, Biology, Physics, Physical Education or Health Education; + <i>separate JCU application</i> <sup>5</sup>	4	-	317031	-	no	SER	-
<b>Planning</b>	English	4	326271	316271	-	yes	17/63	56.55
<b>Psychological Science</b>	English	3	-	311081	-	yes	15/67	63.40
<b>Psychology (Honours)</b>	English	4	-	311561	-	yes	14/69	66.30
<b>Science</b>								
Aquaculture Science & Technology	Assumed Knowledge: English; Maths B Recommended Study: at least one of Chemistry, Biology, Earth Science, Geography, Physics or Maths C	3	326061 <sup>2</sup>	316061	-	yes	16/65	60.20
Chemistry	Assumed Knowledge: English; Maths B Recommended Study: at least one of Chemistry, Biology, Earth Science, Geography, Physics or Maths C	3	-	316061	-	no	16/65	60.20
Data Science	Assumed Knowledge: English; Maths B Recommended Study: at least one of Chemistry, Biology, Earth Science, Geography, Physics or Maths C	3	326061	316061	-	yes	16/65	60.20
Earth Science	Assumed Knowledge: English; Maths B Recommended Study: at least one of Chemistry, Biology, Earth Science, Geography, Physics or Maths C	3	326061	316061	-	yes	16/65	60.20
Marine Biology	Assumed Knowledge: English; Maths B Recommended Study: at least one of Chemistry, Biology, Earth Science, Geography, Physics or Maths C	3	326061 <sup>2</sup>	316061	-	yes	16/65	60.20
Mathematics	Assumed Knowledge: English; Maths B Recommended Study: at least one of Chemistry, Biology, Earth Science, Geography, Physics or Maths C	3	326061 <sup>2</sup>	316061	-	Tsv only	16/65	60.20
Molecular & Cell Biology	Assumed Knowledge: English; Maths B Recommended Study: at least one of Chemistry, Biology, Earth Science, Geography, Physics or Maths C	3	-	316061	-	yes	16/65	60.20
Physics	Assumed Knowledge: English; Maths B Recommended Study: at least one of Chemistry, Biology, Earth Science, Geography, Physics or Maths C	3	-	316061	-	no	16/65	60.20
Zoology & Ecology	Assumed Knowledge: English; Maths B Recommended Study: at least one of Chemistry, Biology, Earth Science, Geography, Physics or Maths C	3	326061	316061	-	yes	16/65	60.20
<b>Advanced Science</b> - Majors as above	English; Maths B Recommended Study: At least one of Biology, Chemistry, Physics or Maths C	3	326361	316361	-	no	6/89	88.80
<b>Social Work</b>	English	4	321091	311091	311099 (Flex)	yes	15/67	61.80
<b>Speech Pathology (Honours)<sup>1</sup></b>	English; plus one of Chemistry; Biology; Physics or Health Education	4	-	317041	-	no	13/72	70.20
<b>Sport &amp; Exercise Science<sup>1</sup></b>	English; Maths A, B or C Recommended: one of Biology, Chemistry, Physics, Health Education or Physical Education	3	-	316111	-	no	15/66	61.85
<b>Technology and Innovation</b>								
Data Science	English. Assumed Knowledge: Maths B	3	322361	312361	-	yes	15/66	63.40
Information Technology	English. Assumed Knowledge: Maths B	3	322361	312361	-	yes	15/66	63.40
Sensor Technologies and the Internet of Things	English. Assumed Knowledge: Maths B	3	322361	312361	-	yes	15/66	63.40
<b>Veterinary Science<sup>1</sup></b>	English; Chemistry; Maths B Recommended: Biology (highly desirable) + <i>separate JCU application</i> <sup>5</sup>	5	-	317051	-	no	SER	-

Joint Degrees	Prerequisite subjects	Years (full-time)	Campus availability and QTAC codes			Mid-year entry	OP/ RANK	ATAR to QTAC conversion
			Cairns	Townsville	Online			
Arts - Business	English; (Maths B desirable)	4	321491	311491	311499 (Ext)	yes	19/61	51.65
Arts - Laws	English	5	321521	311521	-	yes	15/67	63.40
Arts - Science	English; Maths B. Students considering Science majors in Chemistry or Molecular and Cell Biology will require Senior Chemistry (or equivalent)	4	321511	311511	-	yes	16/65	60.20
Business - Laws	English	5	321531	311531	-	yes	15/67	63.40
Business - Psychological Science	English. Recommended: Maths B	4	-	311551	-	yes	14/69	66.30
Engineering (Honours) - Information Technology	English; Maths B	5	324071 <sup>2</sup>	314071 <sup>3</sup>	-	Tsv only	12/74	72.60
Engineering (Honours) - Science	English; Maths B; Students considering the Molecular and Cell Biology major will require Senior Chemistry (or equivalent)	5	324051 <sup>2</sup>	314051 <sup>3</sup>	-	Tsv only	12/74	72.60
Science - Laws	English; Maths B. Students considering Science majors in Chemistry or Molecular and Cell Biology will require Senior Chemistry (or equivalent)	5	321541	311541	-	yes	15/67	63.40
Sport & Exercise Science - Psychological Science	English; Maths A, B or C Recommended: one of Biology, Chemistry, Physics, Health Education or Physical Education	5	-	317161	-	no	14/69	66.30

Please note, campus availability and mid-year entry for joint degrees depends on major chosen. Visit: [jcu.edu.au/courses](http://jcu.edu.au/courses)

Diploma	Prerequisite subjects	Years (full-time)	Campus availability and QTAC codes			Mid-year entry	OP/ RANK	ATAR to QTAC conversion
			Cairns	Townsville	Other			
Diploma of Higher Education Business <sup>7</sup>	English; (Maths B desirable)	1	320011	310011	310019 (Ext)	yes	19/61	51.65

Pathway Programs	Prerequisites	Years (full-time)	Campus availability and QTAC codes		Mid-year entry	OP/ RANK	ATAR to QTAC conversion
			Cairns	Townsville			
<b>Diploma of Higher Education</b>							
Business Studies <sup>8</sup>	English language proficiency	1	320021	310021	yes	-	-
Education	English language proficiency	1	320091	310091	yes	-	-
Engineering & Applied Science	English language proficiency	1	320041	310041	yes	-	-
General Studies	English language proficiency	1	320001	310001	yes	-	-
Health	English language proficiency	1	320061	310061	yes	-	-
Information Technology	English language proficiency	1	320071	310071	yes	-	-
Science	English language proficiency	1	320031	310031	yes	-	-
Social Work	English language proficiency	1	320081	310081	yes	-	-
Society & Culture	English language proficiency	1	320051	310051	yes	-	-

<sup>1</sup> Indigenous Health Careers Access Program (IHCAP) option available for Australian Aboriginal and Torres Strait Islander applicants <sup>2</sup> First year is also available at JCU Cairns (you must transfer to JCU Townsville to complete your course) <sup>3</sup> First year is also available at JCU Townsville (you must transfer to JCU Cairns to complete your degree) <sup>4</sup> Not all teaching areas available in JCU Cairns <sup>5</sup> Additional application due to JCU by 30 September 2019 <sup>6</sup> Additional application due to JCU by 31 October 2019 <sup>7</sup> The Diploma of Higher Education, Business is offered both internally and online and can be undertaken concurrently with another degree. On completion you have the option of entering the second year of the Bachelor of Business. <sup>8</sup> The Diploma of Higher Education, Business Studies is a face-to-face course for students seeking extra support during their studies. On completion you have the option of entering a number of JCU's degree programs.

(Mt) = Mount Isa (Mk) = Mackay (Th) = Thursday Island (Ext) = External, delivered entirely off-campus (dependent on subjects chosen)  
(Flex) = flexible delivery including online learning with some compulsory residential periods on JCU Townsville SER = Special Entry Requirements

# Prerequisite subject equivalents

Interstate, International Baccalaureate (IB) and New Zealand

QLD*	ACT	NSW	SA/NT	TAS	VIC
<b>4 semesters at Sound Achievement (SA) or better</b>	50%+ (as percentage grade) in T Majors only*	50%+ (average of examination mark and school assessment)*	D or better (from Publicly Examined Subjects [PES] only)*	Sound Achievement or better (exit level of achievement)*	25+ (study score)*
<b>English</b>	<ul style="list-style-type: none"> <li>•English</li> <li>•Language and Literature</li> <li>•World Literature</li> <li>•ESL</li> </ul>	<ul style="list-style-type: none"> <li>•English Standard</li> <li>•English Advanced</li> <li>•ESL</li> <li>•English Extension 1</li> <li>•English Extension 2</li> </ul>	<ul style="list-style-type: none"> <li>•English</li> <li>•English Studies</li> <li>•ESL</li> <li>•English Communication</li> <li>•English Literary Studies</li> <li>•English as an Additional Language</li> </ul>	<ul style="list-style-type: none"> <li>•English</li> <li>•Literature</li> <li>•Writer's Workshop</li> <li>•World Literature</li> <li>•English Studies</li> <li>•English Communications</li> <li>•English Writing</li> </ul>	<ul style="list-style-type: none"> <li>•English</li> <li>•English (ESL)</li> <li>•Literature</li> <li>•English Language</li> </ul>
<b>Mathematics A or General Mathematics</b>	<ul style="list-style-type: none"> <li>•Mathematical Applications</li> </ul>	<ul style="list-style-type: none"> <li>•General Mathematics</li> <li>•Maths in Society</li> <li>•Maths in Practice</li> </ul>	<ul style="list-style-type: none"> <li>•Quantitative Methods</li> <li>•Mathematical Methods (up to 2016)</li> <li>•General Mathematics</li> </ul>	<ul style="list-style-type: none"> <li>•Mathematics Applied</li> <li>•Mathematics Applied Senior Secondary 5C</li> </ul>	<ul style="list-style-type: none"> <li>•Further Mathematics</li> </ul>
<b>Mathematics B or Mathematical Methods</b>	<ul style="list-style-type: none"> <li>•Mathematics</li> <li>•Specialist Mathematics</li> <li>•Mathematical Methods</li> </ul>	<ul style="list-style-type: none"> <li>•Mathematics (2U to 4U)</li> <li>•Mathematics Extension 1</li> <li>•Mathematics Extension 2</li> <li>•Mathematics</li> </ul>	<ul style="list-style-type: none"> <li>•Mathematical Studies</li> <li>•Mathematics 1</li> <li>•Mathematical Methods (from 2017)</li> </ul>	<ul style="list-style-type: none"> <li>•Mathematics Methods Senior Secondary 5C</li> <li>•Mathematics Methods</li> <li>•Maths Stage 2 or 3</li> <li>•Algebra and Geometry</li> <li>•Analysis and Statistics</li> <li>•Mathematics</li> </ul>	<ul style="list-style-type: none"> <li>•Mathematical Methods</li> </ul>
<b>Mathematics C or Specialist Mathematics</b>	<ul style="list-style-type: none"> <li>•Specialist Mathematics</li> <li>•Mathematics Advanced Extended</li> </ul>	<ul style="list-style-type: none"> <li>•Mathematics (3U to 4U)</li> <li>•Mathematics Extension 1 and 2</li> </ul>	<ul style="list-style-type: none"> <li>•Specialist Mathematics</li> <li>•Mathematics 2</li> </ul>	<ul style="list-style-type: none"> <li>•Mathematics Specialist Senior Secondary 5C</li> <li>•Mathematics Specialised</li> <li>•Mathematics Stage 2 and 3</li> </ul>	<ul style="list-style-type: none"> <li>•Specialist Mathematics</li> </ul>
<b>Physics</b>	<ul style="list-style-type: none"> <li>•Physics</li> <li>•Electronics</li> </ul>	<ul style="list-style-type: none"> <li>•Science (3U or 4U)</li> <li>•Physics (2U)</li> <li>•Physics</li> </ul>	<ul style="list-style-type: none"> <li>•Physics</li> </ul>	<ul style="list-style-type: none"> <li>•Physics</li> <li>•Applied Science-Physical Sciences</li> <li>•Physical Sciences</li> </ul>	<ul style="list-style-type: none"> <li>•Physics</li> </ul>
<b>Chemistry</b>	<ul style="list-style-type: none"> <li>•Chemistry</li> </ul>	<ul style="list-style-type: none"> <li>•Science (3U or 4U)</li> <li>•Chemistry (2U)</li> <li>•Chemistry</li> </ul>	<ul style="list-style-type: none"> <li>•Chemistry</li> </ul>	<ul style="list-style-type: none"> <li>•Chemistry</li> </ul>	<ul style="list-style-type: none"> <li>•Chemistry</li> </ul>
<b>Biology or Biological Sciences</b>	<ul style="list-style-type: none"> <li>•Biology</li> <li>•Human Biology</li> <li>•Biological Sciences</li> </ul>	<ul style="list-style-type: none"> <li>•Biology (2U)</li> <li>•Biology</li> </ul>	<ul style="list-style-type: none"> <li>•Biology</li> </ul>	<ul style="list-style-type: none"> <li>•Biology</li> </ul>	<ul style="list-style-type: none"> <li>•Biology</li> </ul>

This table is a guide. Please contact our Student Centre for further information on 1800 246 446

## International Baccalaureate (IB) Diploma

### HOW DO I APPLY TO JCU?

If you are a domestic student (who has completed an IB Diploma at a Queensland school, you will need to apply through QTAC.

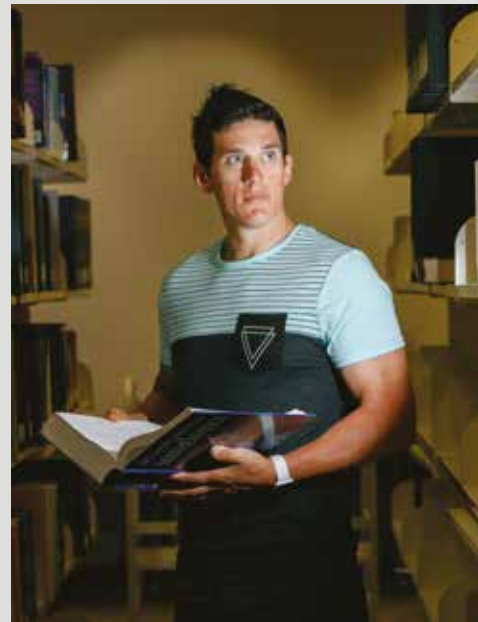
If you completed an IB Diploma at an Australian school outside of Queensland, your school will provide you with a Learner Unique Identifier (LUI) that will allow you to apply through QTAC. This unique application number is different to your IB candidate number, and the format will be three letters followed by three numbers, e.g. abc123.

\* Includes external Year 12 subjects



## Further information for school leavers

WA	IB	NZ
50%+ (subjects scaled mark)*	HL: 3 or higher SL: 4 or higher*	2.0 (achieved or better at NCEA Level 3)*
<ul style="list-style-type: none"> <li>•English</li> <li>•English (Stage 2 or 3)</li> <li>•English for ESL Students</li> <li>•English Literature</li> <li>•English Course</li> <li>•English as an Additional Language or Dialect</li> </ul>	<ul style="list-style-type: none"> <li>•English A1 (HL or SL)</li> <li>•English A2 (HL or SL)</li> <li>•English B (HL or SL)</li> <li>•English A: Language and Literature</li> <li>•English A: Literature</li> </ul>	<ul style="list-style-type: none"> <li>•English</li> </ul>
<ul style="list-style-type: none"> <li>•Mathematics 1</li> <li>•Mathematics IV</li> <li>•Modelling with Mathematics</li> <li>•Mathematics Stage 2C/D</li> <li>•Mathematics Stage 3A/B</li> <li>•Discrete Mathematics</li> </ul>	<ul style="list-style-type: none"> <li>•Mathematical Studies (SL)</li> </ul>	<ul style="list-style-type: none"> <li>•Statistics and Modelling</li> <li>•Statistics</li> <li>•Mathematics</li> </ul>
<ul style="list-style-type: none"> <li>•Calculus</li> <li>•Applicable Mathematics</li> <li>•Mathematics II</li> <li>•Mathematics Stage 3C/D</li> <li>•Mathematics Specialist Stage 3A/B</li> </ul>	<ul style="list-style-type: none"> <li>•Mathematics (HL or SL)</li> </ul>	<ul style="list-style-type: none"> <li>•Mathematics with Calculus</li> <li>•Calculus</li> </ul>
<ul style="list-style-type: none"> <li>•Applicable Mathematics</li> <li>•Mathematics III</li> <li>•Mathematics Specialist Stage 3C/D</li> </ul>	<ul style="list-style-type: none"> <li>•Mathematics (HL)</li> </ul>	n/a
<ul style="list-style-type: none"> <li>•Physics</li> <li>•Physical Science</li> <li>•Physics (Stage 3)</li> </ul>	<ul style="list-style-type: none"> <li>•Physics (HL or SL)</li> <li>•Physical Science (HL)</li> </ul>	<ul style="list-style-type: none"> <li>•Physics</li> </ul>
<ul style="list-style-type: none"> <li>•Chemistry</li> <li>•Chemistry (Stage 3)</li> </ul>	<ul style="list-style-type: none"> <li>•Chemistry (HL or SL)</li> </ul>	<ul style="list-style-type: none"> <li>•Chemistry</li> </ul>
<ul style="list-style-type: none"> <li>•Biology</li> <li>•Human Biology</li> <li>•Biological Sciences</li> <li>•Human Biological Sciences</li> </ul>	<ul style="list-style-type: none"> <li>•Biology (HL or SL)</li> </ul>	<ul style="list-style-type: none"> <li>•Biology</li> </ul>



*“I felt that getting into IoT would be a game changer over the next few years. I think for the way forward, and the future of where the industry’s developing, IoT is going to play a major part in it and I want to be a part of that.”*

### Cameron Gauci

**BACHELOR OF ENGINEERING (HONOURS),  
MAJORING IN ELECTRONIC SYSTEMS AND  
INTERNET OF THINGS ENGINEERING**

# Research Excellence

*JCU is committed to making a positive difference through research, knowledge infrastructure, and commercialisation of research findings.*

JCU produces research of excellence and high impact, particularly on issues of importance to the tropics. Excellence in Research for Australia (ERA) rated 83 per cent of JCU's research fields as world-class or above.

JCU received the highest possible rating, well above world standard, in eight research areas:

- Environmental science and management
- Ecology
- Geology
- Ecological applications
- Plant biology
- Medical microbiology
- Fisheries sciences
- Organic chemistry.

JCU is focused on achieving research excellence in tropical health and medicine, with this commitment resulting in every field of research in medical and health sciences at JCU being rated world-class or above. The JCU Australian Institute of Tropical Health and Medicine (AITHM) is focused on Australia's health security and collaborative partnerships with neighbours in the Asia Pacific region, particularly in Papua New Guinea, the South Pacific and Southeast Asia. In Australia, JCU AITHM partnerships include the Tropical Australian Academic Health Centre or TAAHC and the Northern Queensland Primary Health Network.

JCU's unique location and work in World Heritage sites such as the Great Barrier Reef and the Daintree Rainforest has led to JCU being Number 1 in the world for Marine and Freshwater Biology and Number 2 in the world for Biodiversity Conservation (CWUR 2017). JCU is also the only university to receive the top rating for environmental science and management in every ERA evaluation.



*JCU's proximity to the Great Barrier Reef means students have easy access to a diversity of marine and coastal ecosystems.*



*JCU's own canopy crane in the World Heritage Daintree Rainforest.*



*As a JCU undergraduate student your course may access some of JCU's unique and remarkable research facilities.*

**World-class facilities**

James Cook University is a leader in research addressing the critical challenges facing the Tropics, world-wide.

JCU campuses and research hubs are on the doorstep of some of the world's most spectacular environments: the Great Barrier Reef Marine Park, the rainforests of the Wet Tropics, the savannahs of Cape York Peninsula, and the deserts of the arid outback. These living laboratories provide our staff and students with unlimited opportunities.

JCU's research is central to the region's future, and its importance is acknowledged by both State and Federal Government, and by businesses and organisations across Queensland. We are proud of our strong links with rural, remote and Indigenous communities in our region.

Many local, national and international research organisations and industry groups collaborate with JCU. These linkages help ensure our courses are research-rich and reflect the latest innovations. Many of our staff and students are co-located with researchers from partner institutions.



**JCU CAIRNS**

- Advanced Analytical Centre
- Australian Institute of Tropical Health and Medicine
  - Mosquito Research Facility
  - Advanced Protein Analysis Facility
- Australian Tropical Herbarium
- The Cairns Institute

**JCU TOWNSVILLE**

- Australian Institute of Tropical Health and Medicine
- Australian Research Council (ARC) Centre for Coral Reef Studies
- Centre for Biodiscovery and Molecular Development of Therapeutics
- Centre for Biosecurity and Tropical Infectious Diseases
- Centre for Sustainable Tropical Fisheries and Aquaculture
- Centre for Tropical Environmental and Sustainability Sciences
- Centre for Tropical Water & Aquatic Ecosystem Research
- Cyclone Testing Station
- Comparative Genomics Centre
- eResearch Centre
- MACRO - Centre for Macroalgal Resources and Biotechnology
- NHMRC National Centre of Research Excellence to Improve Management of Peripheral Arterial Disease



BRISBANE

# JCU Cairns Institute

*JCU Cairns Institute brings together the expertise and intellectual resources of more than 20 disciplines in the Humanities and Social Sciences, creating a vibrant hub for research, capacity building and public debate, relevant to tropical societies.*



JCU Cairns Institute is committed to understanding and informing critical processes of social and environmental transformation. Its location in tropical North Queensland and proximity to neighbouring countries in the Pacific and Southeast Asia offers unique opportunities to enhance human life in the tropics and contribute to a brighter, more equitable and enriching future for its peoples.

JCU Cairns Institute's work is organised around eight themes:

- Aboriginal and Torres Strait Islander futures
- Education futures
- Governance and political innovation
- International aid development
- Language, culture, agency and change
- Regional economic development
- Social justice and community wellbeing
- Sustainability and tropical environments.



# JCU Australian Institute of Tropical Health and Medicine

*JCU Australian Institute of Tropical Health and Medicine (AITHM) is a significant tropical health and medical research institute based at JCU.*



JCU AITHM's programs encompass public health, bio-molecular, clinical, translational, and health systems research, focused on the health issues of most importance to tropical Australia, delivering significant public health benefit locally, regionally and globally.

Through its research and innovation, and in partnership with key community organisations and health service providers, JCU AITHM aims to fill a major gap that currently exists at the interface between cutting-edge research and scientific expertise, and health service, workforce and policy delivery.

The establishment of JCU AITHM as a world leader in tropical health, medical and biotechnology research and research training will enable JCU AITHM to:

- Strengthen Australia's health security
- Improve health outcomes in rural, remote, Indigenous and tropical Australia
- Improve occupational health in key industries such as mining and agriculture.

Current research areas include:

- Tropical infectious disease
- Chronic disease with high prevalence in the tropics
- Development of new diagnostics, therapeutics and vaccines
- Health systems in tropical, regional, rural and remote communities.



# JCU Daintree Rainforest Observatory

*The JCU Daintree Rainforest Observatory (DRO) is located in lowland tropical rainforest at Cape Tribulation, 140 kilometres (87 miles) north of Cairns. It is a unique part of the world, where the reef meets the rainforest and two World Heritage areas lay side-by-side.*



Wet Tropics rainforests have the highest biodiversity of anywhere in Australia, supporting 800 species of vertebrates and over 5,000 plant species. Flora and fauna endemic to the region attract researchers from across the globe.

JCU's DRO is one of only five long-term ecological monitoring sites in Australia. It offers accommodation, one open-air teaching lab and one traditional air-conditioned lab.

The facility also houses an extensive insect collection and herbarium for visitors.

JCU's canopy crane makes it possible to view the rainforest from the atmosphere above the canopy, through its different levels, and down to the soils and subterranean water resources. The crane allows students to use complex scientific equipment to observe ecological, physiological and atmospheric processes in-situ.

The JCU DRO forms part of the TERN Australian Supersite Network helping JCU ascertain how key ecosystems will respond to future environmental change. As such, the DRO forms part of a worldwide network of projects that aim to understand environmental change across the globe.

Currently, the JCU DRO is supporting the development of a project seeking to understand the impacts of decreased rainfall on rainforests in the seasonal tropics, where climate change predictions suggest that dry season severity will increase. This aids the understanding of changing climates on rainforest biodiversity.



[jcu.edu.au/dro](http://jcu.edu.au/dro)



*Students develop skills and in-depth knowledge while doing field work at JCU's world-class facilities.*

# JCU Orpheus Island Research Station

*The JCU Orpheus Island Research Station is located on the western side of Orpheus Island with ready access to pristine inshore reefs and islands. A known 1,100 species of fish and 340 of the 350 known species of reef coral can be found in the underwater gardens of the surrounding reefs.*



The island comprises 1,368 hectares of dry woodlands with Moreton Bay Ash and Acacias dominating, scattered rainforest gullies featuring Fig and Macaranga trees, grasslands, granite outcrops, and beaches and bays surrounded by fringing reefs.

Exploring the waters off Orpheus Island reveals a number of different types of submerged historic sites. From Indigenous sites to recent shipwrecks, this Research Station is also a base for training in search and survey techniques.

Marine Biology students regularly visit Orpheus Island to study the diverse fauna, particularly on the sand and rubble intertidal reef flat, as well as investigating fauna associated with the mangrove community.

Scientific resources on the island include climate-controlled research rooms, wet laboratories, a versatile saltwater aquarium system and six aquarium raceways.





# JCU Marine & Aquaculture Research Facility (MARF)

*JCU leads the world in coral reef studies and tropical aquaculture. JCU's strong international reputation also includes biological oceanography, marine biology, coral reef studies, population and quantitative genetics, population ecology and fisheries, and marine conservation.*

## JCU Aquarium Complex

The JCU Aquarium Complex comprises large re-circulated seawater and freshwater aquarium systems, as well as controlled-environment facilities, home to oysters, mud crabs, corals, reef fishes and freshwater fishes. Several large outdoor covered areas are also available. These systems permit the successful rearing of reef fishes through egg, larval and settlement stages.

JCU staff and students collaborate with partner organisations including the Australian Institute of Marine Science (AIMS) and the Great Barrier Reef Marine Park Authority (GBRMPA) as well as industry partners, particularly in aquaculture.

The Australian Research Council's Centre of Excellence in Coral Reef Studies at JCU leads the world in the science of understanding and managing coral reef resources.



# ARC Centre of Excellence for Coral Reef Studies

*The ARC Centre of Excellence for Coral Reef Studies is the world leader in integrated research for sustainable use and management of coral reefs.*



The Centre underpins Australia's leading contribution to coral reef sciences, and fosters stronger collaborative links between the major partners and 24 other leading institutions in nine countries. Collectively, the Centre creates the world's largest concentration of coral reef scientists.

The Centre is a partnership of JCU, the Australian Institute of Marine Science (AIMS), The Australian National University, the Great Barrier Reef Marine Park Authority (GBRMPA), The University of Queensland and The University of Western Australia.

*Professor Joshua Cinner, Chief Investigator, ARC Centre of Excellence for Coral Reef Studies and winner of the 2017 Elinor Ostrom Award, interviews PNG fishermen about adapting to changing social and environmental conditions.*



# AIMS@JCU

*AIMS@JCU is a strategic alliance between JCU and the Australian Institute of Marine Science (AIMS). It integrates strengths, synergies, infrastructure and expertise in world-class tropical marine research capacity.*



AIMS is the Australian government's tropical marine research agency. AIMS@JCU is strategically focused on the AIMS research plan, which addresses national and international research priorities and skills gaps, to advance global knowledge required to understand and sustainably manage marine resources.

AIMS@JCU informs government policy and improves the global knowledge and tools required to understand and sustainably manage marine resources. It also makes a significant contribution to training the next generation of marine science leaders equipped with expertise of most relevance to meet real-world challenges.

*Global coral bleaching event – AIMS RV Cape Ferguson at Coates Reef conducting coral bleaching surveys. Six cameras mounted on a pole were recording at the same time to capture the scene.*

# JCU eResearch Centre

JCU has an increasingly significant role in the development of eResearch globally, by engaging innovative and creative practices both locally and worldwide. JCU's eResearch Centre is multi-disciplinary with IT professionals and members of the public. The aim is to advance tropical knowledge and harness the power of technology and data.

Current projects include the development of a Tropical Data Hub, the implementation of a comprehensive environmental monitoring system at JCU's Daintree Rainforest Observatory, the Smart Environment Monitoring & Analysis Technologies (SEMAT) project, and the Wallace Initiative – a website for climate predictions and variables using biodiversity and climate data.

[eresearch.jcu.edu.au](http://eresearch.jcu.edu.au)



*Licuala palms are among the diversity of plants that grow in the tropical rainforests of Northern Australia.*

# JCU Advanced Analytical Centre

The JCU Advanced Analytical Centre (AAC) is a central analytical facility, providing a range of analytical instrumentation. The AAC is supported by highly-experienced staff and has projects ranging from the analysis of the oldest rocks on Earth to corrosion of medical implants, and reef ecosystems to archaeological artefacts.

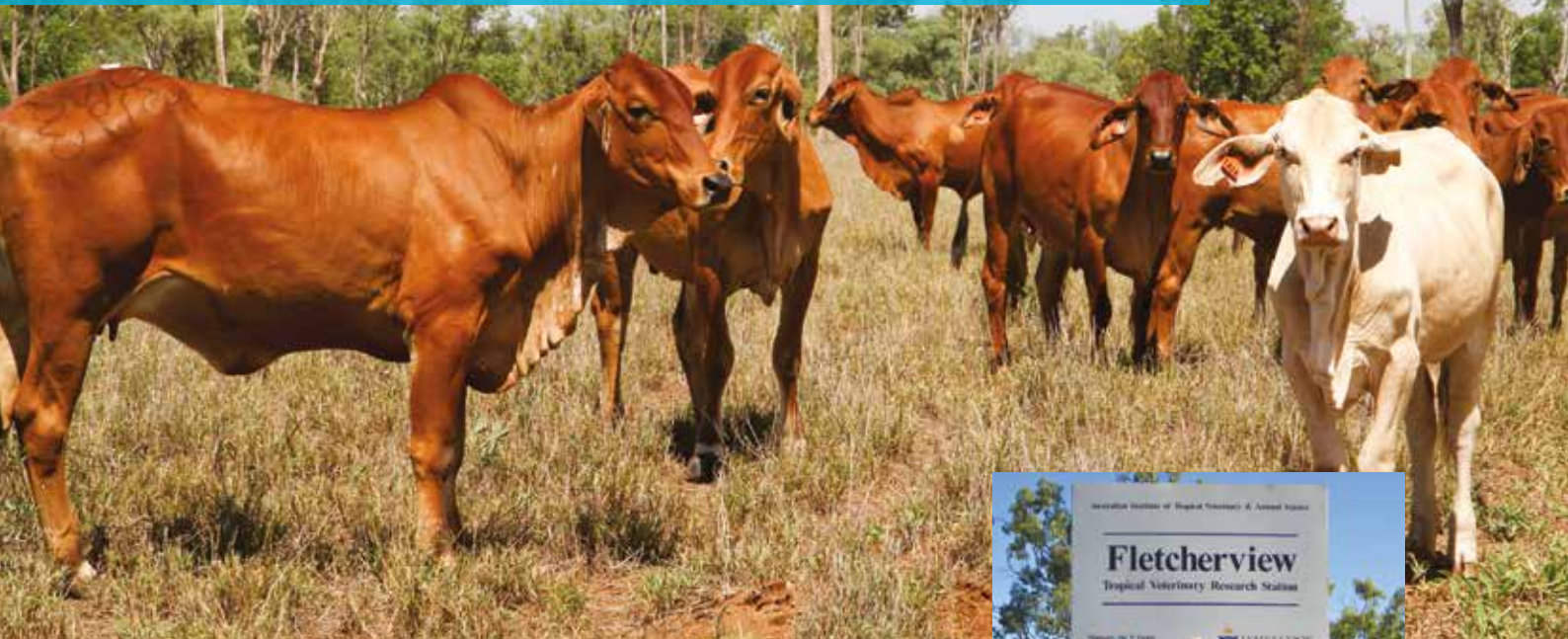
The AAC provides access to a number of techniques covering the fields of microscopy and microanalysis, inorganic and organic chemical analysis, mineralogy/crystallography and genetic analysis.

[jcu.edu.au/aac](http://jcu.edu.au/aac)



# JCU Fletcherview Research Station

*JCU's Fletcherview Research Station focuses on tropical Agriculture and Veterinary Science. It is a massive 1,960 hectare working cattle station situated 98 kilometres (60 miles) southwest of Townsville, in Australia's major cattle producing area.*



Students studying Tropical Agriculture and Tropical Veterinary Science obtain a hands-on practical experience associated with grazing in the dry Tropics.

The region experiences a wet season followed by a six-to-nine month dry season. Fletcherview also supports study in biology and botany, and field trips to examine the unique geomorphology and geology of its lava flows.



*Make Life Matter*

Your world-class  
education begins here



JAMES COOK  
UNIVERSITY  
AUSTRALIA

[jcu.edu.au](http://jcu.edu.au)

## Apply to JCU



Email us at:  
[enquiries@jcu.edu.au](mailto:enquiries@jcu.edu.au)



Apply online:  
[jcu.edu.au/applying-to-jcu](http://jcu.edu.au/applying-to-jcu)

JCU Student Centre is your number one point of contact. JCU advisors will provide advice on courses and careers, subjects, fees, support services and scholarships.

Townsville: 07 4781 5255  
Cairns: 07 4232 1000  
Freecall (within Australia): 1800 246 446  
Email: [enquiries@jcu.edu.au](mailto:enquiries@jcu.edu.au)



[jamescookuniversity](https://www.facebook.com/jamescookuniversity)



[jamescookuniversity](https://www.instagram.com/jamescookuniversity)



[@jcu](https://twitter.com/@jcu)



[jculife.tumblr.com](http://jculife.tumblr.com)



[jculife](https://www.snapchat.com/add/jculife)



[James Cook University](https://www.linkedin.com/company/james-cook-university)



[James Cook University](https://www.youtube.com/channel/UCjcu)

© James Cook University, Marketing, 2019

Print: Printcraft

Photography: 123RF, Andrew Rankin, Brad Newton, iStockphoto, Kerry Trapnell, NASA, Orpheus Island Resort, Paul Dymond, Matt Cummock, Luka Kauzlaric, Nicki Zieth, Shutterstock, Steven Nowakowski, Steve Rutherford, Through the Looking Glass Photography, Tourism Queensland, Amber Hill, Kate Hutson

This publication is intended as a general guide for domestic students only. Prospective domestic students and all international applicants should contact the University to confirm admission requirements and the availability of courses.

Information is correct at the time of printing.

James Cook University reserves the right to alter any course or admission requirement without prior notice. Check for updates at [jcu.edu.au](http://jcu.edu.au)

James Cook University CRICOS Provider code 00117J.

Content: Pacesetter coated, satin, 90gsm

Cover: Maine recycled, silk, 250gsm



JCU: Ready today  
for tomorrow

