

ISSUE 01

Living Campus

Estate Directorate, Division of Services and Resources

The Science Place – Townsville Hassell Architect

From the Estate Directorate

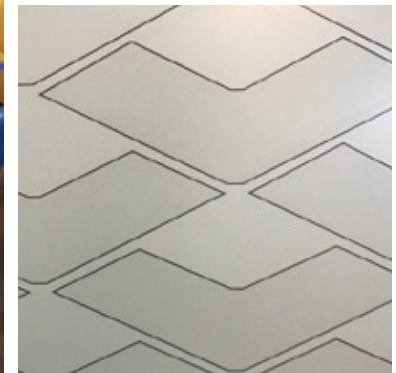
Where we build, maintain, operate, refurbish, fix, clean, schedule, allocate, repurpose, move, demolish, deliver, support and make stuff happen!

As part of the normal day to day operational needs to ensure JCU Townsville Campus, Cairns Campus and all our JCU off site facilities are alive and thriving, our teams work closely together to deliver a range of complex projects and functions. An opportune way to keep staff and students informed of the work going on in the background, and to showcase new projects or major construction that is underway is to send out this newsletter. For example, in our next newsletter we will provide an update about the Space Rationalisation Project and update the progress of Student Accommodation project. This format is the first of a new style and layout. We hope you like it.

So, how do we physically support a 'Living Campus' you ask? Estate Directorate provides an interesting mix of skillsets - from designing and constructing new buildings or facilities, coordinating asset management of a diverse portfolio of facilities and equipment, publishing the JCU Timetable, assisting staff space moves right through to the provision of landscaped, clean and safe campus environments. With every function in the Directorate, we aim to find opportunities to enhance student engagement, support JCU staff needs, create new student spaces and directly support JCU as a whole with the delivery of the new buildings. Part of our Directorate work ethic is to ensure every new project or refurbishment aims to strengthen our University's economic position, deliver a balanced and engaging environment and provide facilities that support successful student learning.

Estate Directorate provides support in the following teams located across the Townsville Campus and Cairns Campus:

- OPERATIONS – Ground maintenance, security, cleaning, campus services, distribution services, fleet management, and environmental management
- PLANNING AND DEVELOPMENT – Project Managers, clerks of works, architectural and building design and infrastructure services
- ASSET STRATEGY AND MAINTENANCE – Building services, keys, electrical, maintenance and data systems
- INFORMATION MANAGEMENT, SPACE AND TIMETABLING – JCU Timetable, space planning and building information systems



CONTACT:

Dana Alexander

Head, Information Management, Space and Timetabling

Email: dana.alexander@jcu.edu.au

Phone: (07) 4781 4485

The Science Place – Townsville

History about the Project: The Science Place is a teaching and research facility on the JCU Townsville Campus catering for disciplines including biology, chemistry and biochemistry. The facility has been designed to contemporary standards including state of the art technology to enable virtual delivery to local and regional schools in real-time. This new facility will also offer an opportunity to increase JCU's capacity for STEM and health based discipline enrolments.

Project Value

- Approximately \$85 million
- Building Code Australia compliant project
- Education Infrastructure Funded project
- CSIRO partner funded

Design Features

State of the art teaching and research laboratories with traditional computer and technology enabled active and social learning spaces. There are also a collaborative lecture theatre, offices, break-out and meeting spaces. The facility has been designed with three retail outlets that will cater for café-style food and refreshments as a place to unwind and relax. On the ground floor there is a floor to ceiling cylindrical aquarium with “mock” coral which will be a new home to several types of reef fish. There is also a terrarium which will be stocked with typical rainforest fauna such as snakes, lizards and frogs.

Image credits: Townsville Hassell Architect





The Verandah Walk - Townsville

Estate Directorate is planning to build a series of continuous undercover walkways to provide essential linkages to the Academic core of the University, and join the student retail spaces, student services, teaching and administrative functions via strategically positioned connections (nodes).

The construction of this walkway will provide a safe, welcoming and supportive environment for all users at JCU whilst also linking all users to the tropics. Deliberately designed to ensure JCU has a tropical narrative that embraces and responds to the distinctiveness of the region such as variable light, shade, humidity, breeze, rain and sunshine. These well-spaced nodes will create opportunities for interaction between staff and students, as well as providing all-weather study zones that enable a closer connection to the surrounding environment. With this improved accessibility, all students will be able to move their way throughout the University core to reach their destinations.

Project Manager is Mark Thompson.

Photography by Postle Photography



JCU Cairns City Campus – Cairns CBD

Another exciting campus has been added to the Cairns district. JCU Cairns City Campus opened its doors to students and staff on the 22nd February 2017. The address is 36 Shield Street which is in the heart of the Cairns CBD Mall. JCU Cairns City Campus provides a welcome lounge, student study areas, Mac computer lab, collaborative teaching area, boardroom/moot court, meeting rooms and staff office suites for JCU - Generalist Medical Teaching. The Cairns CBD Campus has also drawn on Far North Queensland colour schemes and artwork to suit the greater region.

In particular, the use of artwork produced by well known, local Indigenous artists and the selection of a bold colour palette has captured the theme of life in the tropics. So when you are next in Cairns, please bring along your student or staff cards and gain access to our newest campus.

Project Manager is Rachel Argent.



The Internet of Things (IoT) - Cairns

The Internet of Things is a new 4 year course launched by JCU Bachelor of Engineering in 2017 supported for delivery in a cleverly refurbished teaching space (Building E1 on Cairns Campus). The construction work was completed by local construction company Field Construct, and was up and ready for teaching use on day one of the new semester. The space on ground floor of Building E1 includes student group meeting room, student teaching work shop, staff work shop, and a study area. The IoT was opened officially on the 20th February 2017 by our Vice Chancellor, Sandra Harding and representatives from the Chinese telco vendor, Huawei.

Deliberately designed to incorporate the internal services and showcase the exposed concrete flooring, the atmosphere of this new environment is both inviting and modern. The extra high ceilings allow the spaces to appear more open. A bold and collaborative space, the IoT will definitely become a benchmark for future teaching spaces.

Project Manager is Peter Vardy.

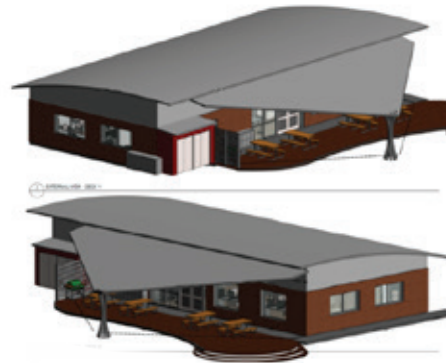


Photography by Hutchinson Builders

Australian Institute of Tropical Health and Medicine (AITHM) – Thursday Island

The AITHM is tracking close to the end of the three facility roll out within our JCU environments with the completion of the recently opened AITHM – Thursday Island. Close on its' heels for opening is the AITHM-Cairns facility which is under construction at the moment. Once AITHM - Cairns is completed, the three locations used by AITHM will be Townsville, Cairns and the Torres Strait. With a greater intention of AITHM to bring together the research capacity and expertise of a number of research Centres, the opening of AITHM - Thursday Island is a welcome step forward.

AITHM - Thursday Island is designed to become a world-class infectious diseases research facility incorporating a PC2 laboratory, specialist laboratory support spaces and offices. It is also proposed to deliver residential accommodation for long and short term stays. The primary contribution will be in health security research and will include the development of diagnostic tools, vaccines, the identification of bacterial pathogens and the direct engagement with tropical health practitioners. The choice of fabric, treatment and colours makes this facility stand out as a strong presence in the area. *Project Manager is Mark Thompson.*



Australian Aboriginal and Torres Strait Islander Centre (AATSI Centre) – Cairns

AATSI Centre is to be delivered to encourage leaders in Indigenous education, research and engagement through the delivery of sustainable programs that empower staff and students to reach their full potential. Being located in close proximity to teaching spaces, library and outdoor areas, the new space will quickly become a great hub for their students.

Project Manager is Rachel Argent.

Connections to Country Walk-Run Track

A sneak preview of the beautiful view from the Hill Walk on JCU Townsville hills. Environment Officer, Adam Connell is putting a lot of effort into establishing a hill run (walk for those so inclined) similar to the goat track on Castle Hill, in collaboration with Discovery Rise Team and Work for the Dole. Stay tuned...



JCU Introduces Hybrid Corollas to the fleet

Currently JCU hires out vehicles to departments and short term users on an as required basis. These fleets include sedans, utes and 4x4 variants. Recently JCU has introduced 3 new Petrol-Hybrid vehicles into these fleets to replace their fossil fuel reliant cousins.

Alongside the standard Corolla the new Hybrid uses less fuel and produces less emissions while still giving you the same driving feel as the full petrol model. The Hybrid is reported to use only 4.1L/100kms and produce 96g CO2/100km compared to the standard Corolla's 6.1L/100kms and 143g CO2/100kms. The new Toyota Corolla Hybrids are now available for hire at Townsville and Cairns Campuses. For further information contact vehicles@jcu.edu.au.

Estate Directorate Staff News



Farewell and... Welcome back mate.

Estate Directorate also has to say farewell to Matthew O'Halloran (exiting Head, Information Management, Space and Timetabling). Unfortunately Matthew's contract time in this auspicious role has come to a close with my return to work. This demanding portfolio has gone from strength to strength with Matthew's outstanding data analysis skillsets, and his high level of resolve.

Lesser people would have resigned being responsible for the implementation of a new Timetable system in a University, and despite that being a once in a lifetime chance – I am personally glad Matthew was here to help it progress as he did a great job. As I was away on maternity leave, I am forever grateful Matthew took the lead and kicked great goals. Do not fear though, we have not let him go too far as we have asked Matthew to remain on board in a casual position to help Estate Directorate roll out the Space Rationalisation Project. Should make rolling out the Timetable Project like a walk in the park...



Farewell... With a sad face.

Sadly we have to say farewell to Vanessa Warrington our Capital Projects Support Officer. After more than 2 years with the Project and Development team, Vanessa has decided to take her great personality, strong work ethic and buckets of patience to a new Engineering company where she will be directly involved in supporting sustainability of the region.

She has been a great coordinator for the Project Teams and will leave a big gap to be filled by her replacement. We are sad to see Vanessa go but wish her the very best for her new employment opportunity! But at least Vanessa gave us her banana cake recipe before she told us she was leaving. Softened the blow slightly

CONTACT:

Dana Alexander
Head, Information Management, Space and Timetabling
Email: dana.alexander@jcu.edu.au
Phone: (07) 4781 4485

Your chance to have a say

As part of the Estate Directorate's commitment to improved engagement with its service partners and students through the provision of capital projects and general services delivery, there will be an opportunity for staff and students to be involved in several new initiatives this year. These initiatives are focussed around improving the student experience, progressing capital renewal and enhancing sustainability. In the interim, please feel free to provide feedback on any issues you may have with any member of the Estate Directorate team.