

Potential Host Organizations



College of Marine and Environmental Sciences
2015

WORK INTEGRATED LEARNING (WIL)

The application of skills and knowledge developed through a degree in a practical workplace environment



College of Marine and Environmental Sciences

JCU WIL Background

Work Integrated Learning (WIL) refers to diverse approaches to learning which bring together the theory of a discipline with its relevant work practice, using a specifically designed curriculum.

Since 2009 James Cook University as part of **Innovative Research Universities** (IRU) has been working on a project with the **Australian Chamber of Commerce and Industry** (ACCI) to develop a framework for work integrated learning. This framework assists businesses and universities to engage efficiently and productively in the provision of work integrated learning.

Australian employers want, and need, graduates with some experience in the workplace. Work integrated learning, or WIL, supports a range of approaches that integrate theory with the practice of work.

The most common form of WIL involves a student placement or project within a workplace.

WIL in the College of Marine and Environmental Sciences

WIL is an academic credit option for any student enrolled within the College of Marine and Environmental Sciences with an available elective subject. It can take many different forms including practicums, fieldwork, internships, vacation work or volunteer work. These opportunities equip students with practical skills and experience to succeed after graduation

WIL Opportunities Include :

- * **Rehabilitation and Revegetation**
- * **Environmental Management**
- * **Protected Area Management**
- * **Natural Resource Management**
- * **Urban and Town Planning**
- * **Sustainability**
- * **Hydrology and Water Management**
- * **Marine Sciences**
- * **Ecology and Conservation**
- * **Zoology**
- * **Botany**
- * **Marine Biology**
- * **Aquaculture**
- * **Marine Resource Management**



WIL Features

The WIL professional placement subject in the College of Marine and Environmental Sciences offers:

- * **140 hours (flexible) professional placement experience**
- * **Identified learning goals and reflective practice**
- * **Workplace supervision/mentoring**
- * **Employment/career ready skills**
- * **Direct supervisor evaluation**
- * **Relevant insurance coverage**
- * **Dedicated JCU staff coordinator/ liaison and support**

Enquiries:

Work Placement Coordinator

Dr Yetta Gurtner
Room 217 Building 34*
College of Marine and
Environmental Sciences
James Cook University

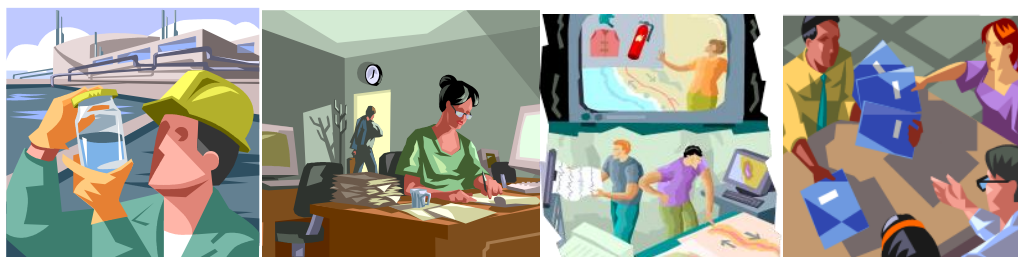
Ph. (07) 47815617

Email: yetta.gurtner@jcu.edu.au

*Townsville campus

Professional Placement

SC3008/SC5008



ELIGIBILITY

- Students must have successfully completed **at least** 12 credit points (4 subjects) at level 2
- Available as an **elective subject** in most degree programs
- Placement must be relevant to the student's degree/major or profession – 140 hours **minimum** (block period or extended up to 12 months)

PROCESS

- Any interested student should contact the placement coordinator to arrange an appointment (in person or via telephone) to discuss the placement subject/requirements and assessment
- **A student must source/apply for their placement position**
- Volunteer placements are covered under JCU insurance, the host organisation should provide insurance for paid placements
- Once a potential placement position is identified the student should provide the name/contact details of the nominated host organisation supervisor to the placement coordinator at JCU
- The placement coordinator will contact the nominated placement supervisor explaining the subject requirements and request confirmation to proceed
- Once the placement is confirmed the student is authorized to enrol in either SC3008/SC5008

ASSESSMENT

- In the first week the student must consult with the Placement Supervisor to develop and document a "Placement Proposal" addressing:
 - Duration of placement (proposed start/end dates, hours etc)
 - Placement description and student obligations
 - Special conditions
- A Reflective Journal and supporting documentation/evidence **MUST** be maintained throughout placement
- A Reflective Essay due **14 days** after Placement end date
- Host Placement Supervisor Appraisal/feedback is obtained on completion of placement
- Finalisation Interview (pre-interview form and CV required)

Placement coordinator: Dr Yetta Gurtner

Contact: yetta.gurtner@jcu.edu.au (email is preferred contact) **Phone:** 07 4781 5617